

# COOLIDGE POLICE DEPARTMENT



## Monthly Activity Report

---

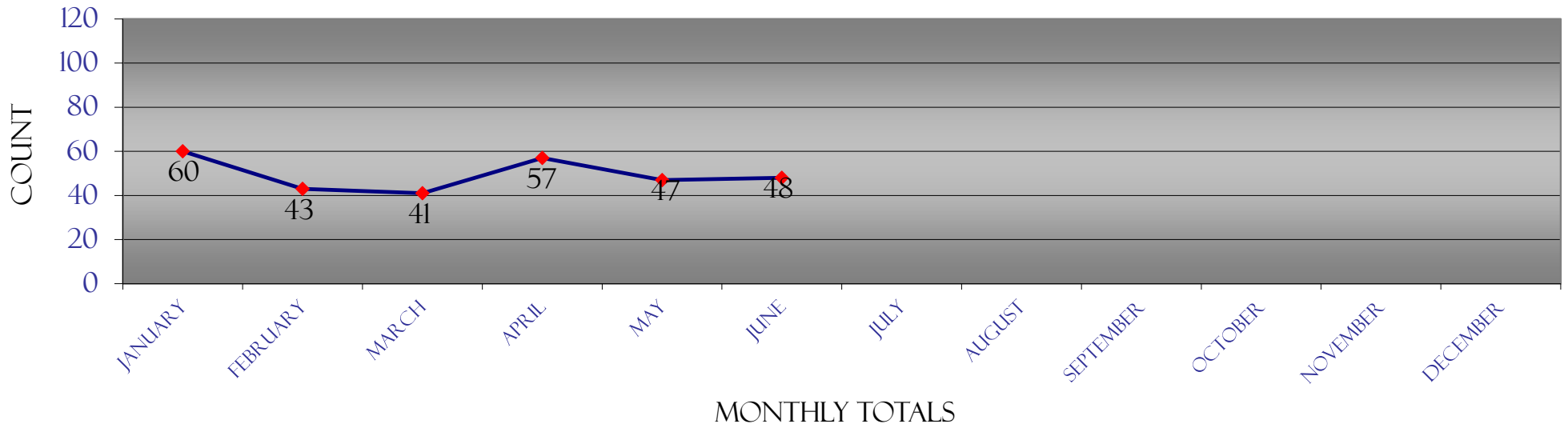
July  
2014

# COOLIDGE POLICE DEPARTMENT

## 2014 UNIFORM CRIME REPORT & TRAFFIC DATA

2013	January	February	March	April	May	June	July	August	September	October	November	December	Totals	Rate/1,000
<b>Homicide</b>	0	0	0	0	0	0							<b>0</b>	<b>0.00</b>
<b>Forcible Rape</b>	0	0	0	1	0	1							<b>2</b>	<b>0.17</b>
<b>Robbery</b>	0	0	1	2	3	2							<b>8</b>	<b>0.66</b>
<b>Agg. Assault</b>	3	3	2	3	4	1							<b>16</b>	<b>1.32</b>
<b>Violent Crime</b>	<b>3</b>	<b>3</b>	<b>3</b>	<b>6</b>	<b>7</b>	<b>4</b>							<b>26</b>	<b>2</b>
<b>Burglary</b>	14	8	7	10	3	6							<b>48</b>	<b>3.96</b>
<b>Theft</b>	43	32	29	39	33	37							<b>213</b>	<b>17.57</b>
<b>Motor Vehicle Theft</b>	0	0	2	1	4	1							<b>8</b>	<b>0.66</b>
<b>Arson</b>	0	0	0	1	0	0							<b>1</b>	<b>0.08</b>
<b>Property Crime</b>	<b>57</b>	<b>40</b>	<b>38</b>	<b>51</b>	<b>40</b>	<b>44</b>							<b>270</b>	<b>22.28</b>
<b>Total Part I Crime</b>	<b>60</b>	<b>43</b>	<b>41</b>	<b>57</b>	<b>47</b>	<b>48</b>							<b>296</b>	<b>24.42</b>
<b>Crime Rate Per 1,000</b>	<b>4.95</b>	<b>3.55</b>	<b>3.38</b>	<b>4.70</b>	<b>3.88</b>	<b>3.96</b>							<b>25.03</b>	
<b>Assault</b>	15	9	17	17	14	9							<b>81</b>	<b>6.68</b>
<b>Drug Offenses</b>	10	4	4	2	2	1							<b>23</b>	<b>1.90</b>
<b>Accidents w/injuries</b>	3	6	3	3	3	4							<b>22</b>	<b>1.82</b>
<b>Accidents w/o injuries</b>	9	14	12	11	9	10							<b>65</b>	<b>5.36</b>
<b>Fatal accidents</b>	0	0	0	0	0	0							<b>0</b>	<b>0.00</b>
<b>Traffic - Civil/Criminal</b>	33	90	92	96	224	66							<b>601</b>	<b>49.59</b>
<b>DUI arrests</b>	3	2	10	7	4	2							<b>28</b>	<b>2.31</b>

### 2014 UNIFORM CRIME REPORT



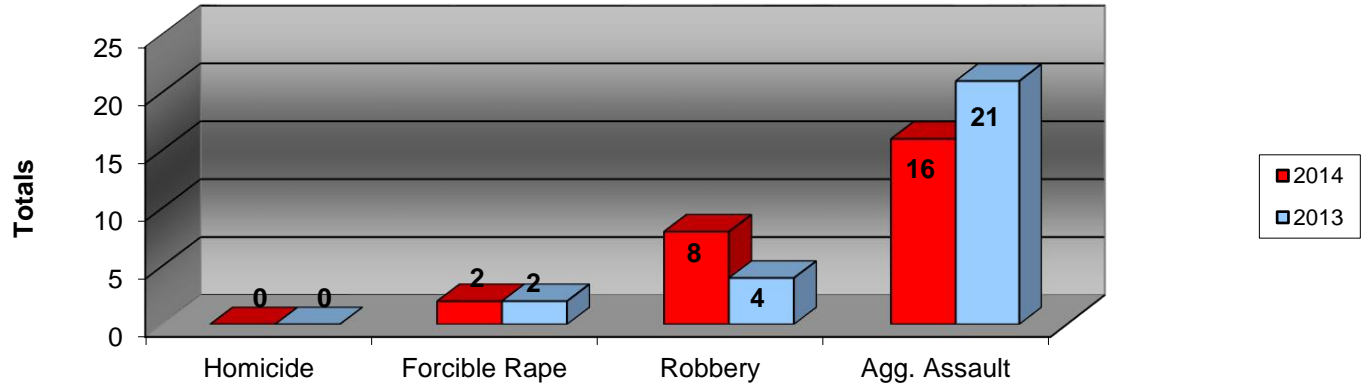
The eight crimes listed at the top of the report are Part I crimes reported for statistical purposes to the Department of Public Safety and the FBI.  
 The rate is calculated using population estimates of 12,120 provided by Office of Employment & Population Statistics, Arizona Department of Administration

# COOLIDGE POLICE DEPARTMENT

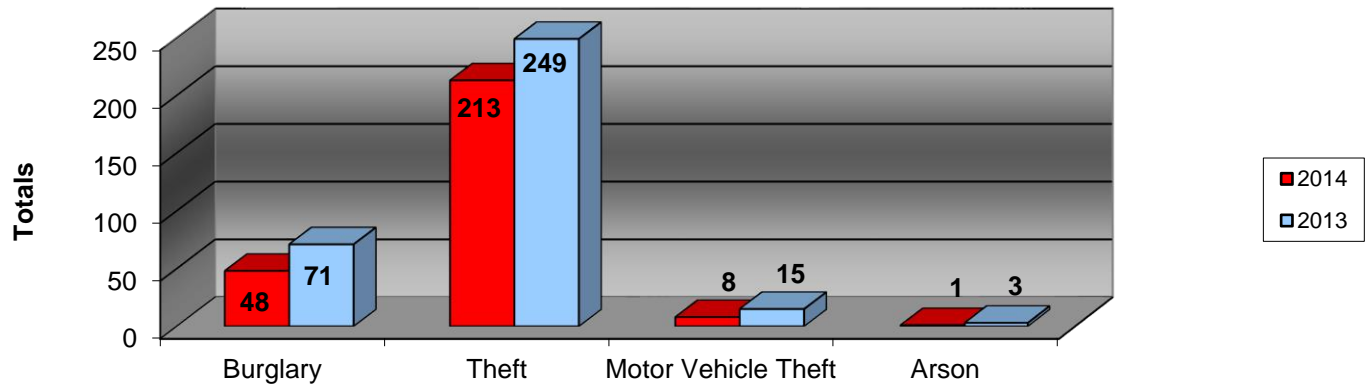
## YEAR TO DATE CRIME COMPARISON

### JUNE 2014

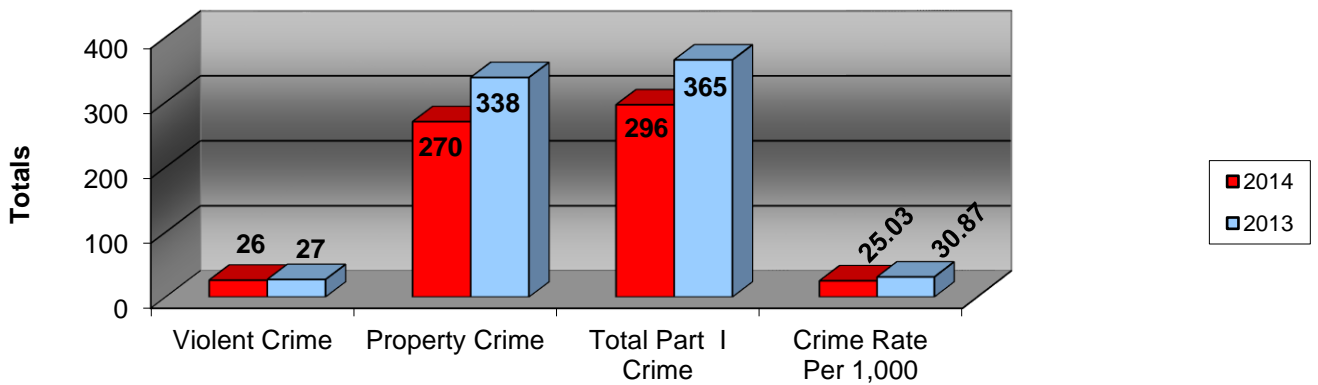
#### Violent Crimes



#### Property Crimes



#### Total Crimes & Rate

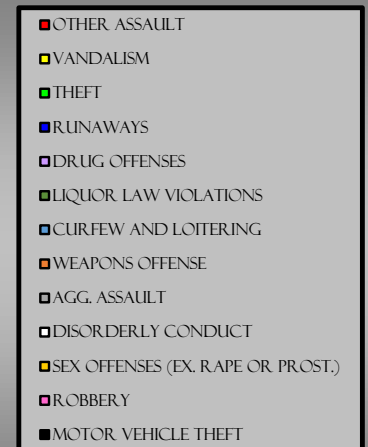
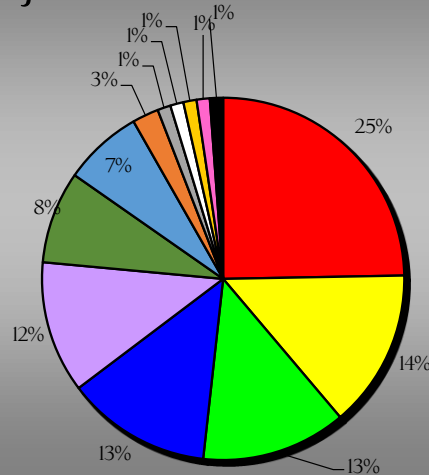


# COOLIDGE POLICE DEPARTMENT

## 2014 JUVENILE ACTIVITY & ARRESTS REPORT

<b>Part I Crimes</b>	<b>January</b>	<b>February</b>	<b>March</b>	<b>April</b>	<b>May</b>	<b>June</b>	<b>July</b>	<b>August</b>	<b>September</b>	<b>October</b>	<b>November</b>	<b>December</b>	<b>Totals</b>
Homicide	0	0	0	0	0	0							0
Forcible Rape	0	0	0	0	0	0							0
Robbery	0	0	0	1	0	0							1
Agg. Assault	1	0	0	0	0	0							1
Burglary	0	0	0	0	0	0							0
Theft	5	0	4	1	1	0							11
Motor Vehicle Theft	0	0	0	1	0	0							1
Arson	0	0	0	0	0	0							0
<b>Totals</b>	<b>6</b>	<b>0</b>	<b>4</b>	<b>3</b>	<b>1</b>	<b>0</b>							<b>14</b>
<b>Part II Crimes</b>													
Other Assault	2	3	5	3	6	2							21
Weapons Offense	0	0	1	1	0	0							2
Vandalism	4	1	3	1	2	1							12
Disorderly Conduct	0	0	1	0	0	0							1
Sex Offenses (ex. Rape or Prost.)	0	0	1	0	0	0							1
Drug Offenses	6	2	1	0	1	0							10
DUI arrests	0	0	0	0	0	0							0
Liquor Law Violations	0	1	0	0	6	0							7
Curfew and Loitering	0	2	0	0	0	4							6
Runaways	0	3	2	2	2	2							11

YTD 2014  
JUVENILE ACTIVITY

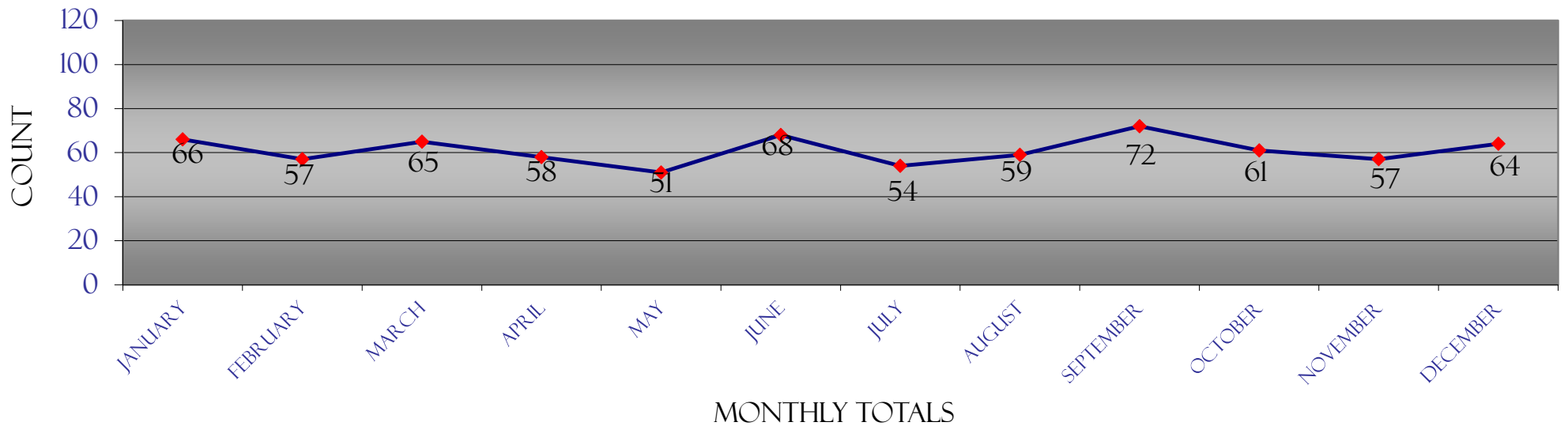


# COOLIDGE POLICE DEPARTMENT

## 2013 UNIFORM CRIME REPORT & TRAFFIC DATA

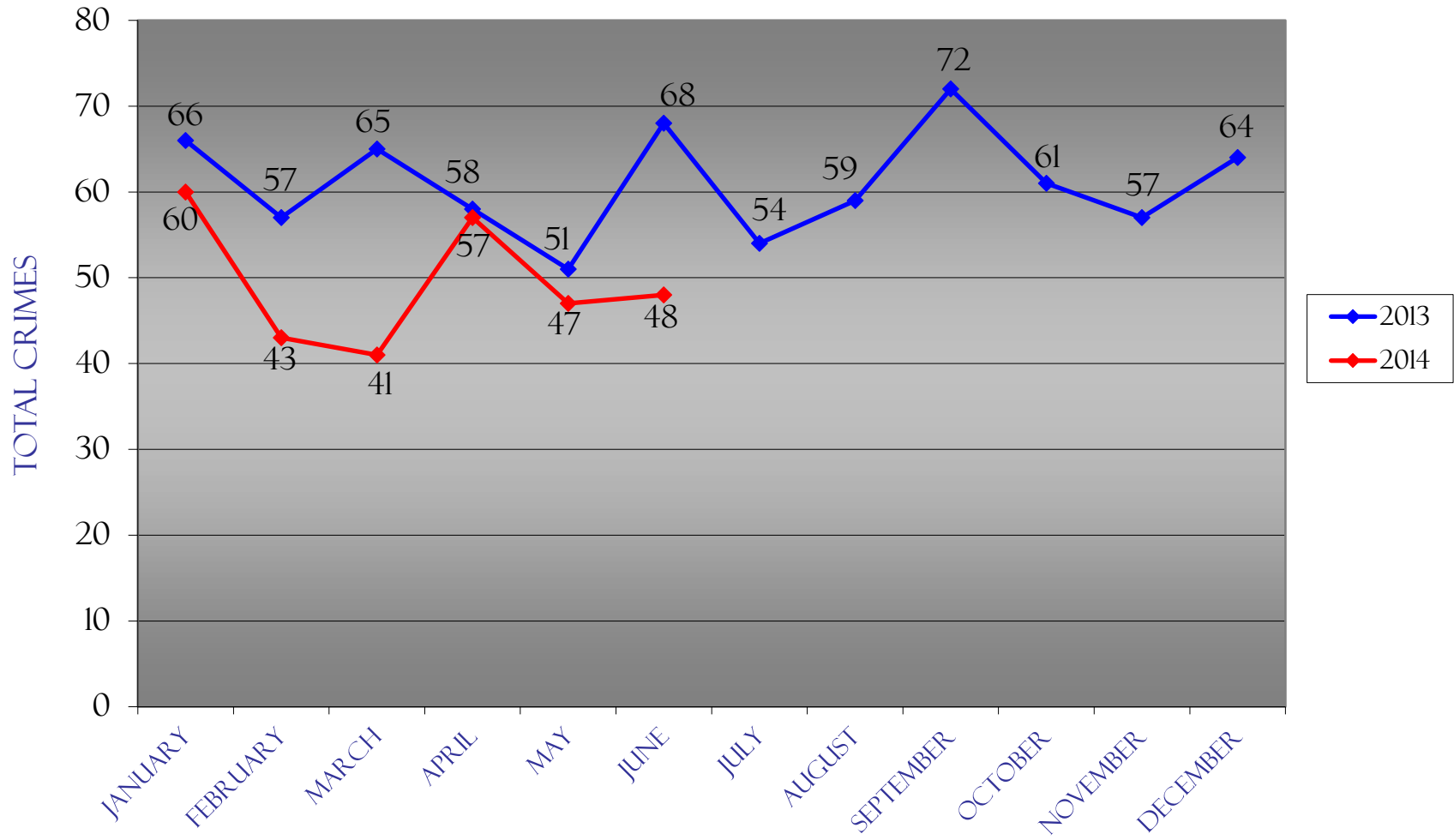
2013	January	February	March	April	May	June	July	August	September	October	November	December	Totals	Rate/1,000
<b>Homicide</b>	0	0	0	0	0	0	0	0	0	0	0	0	0	0.00
<b>Forcible Rape</b>	1	0	1	0	0	0	0	0	1	0	2	0	5	0.42
<b>Robbery</b>	1	1	0	0	1	1	2	0	1	5	1	0	13	1.10
<b>Agg. Assault</b>	4	4	1	3	4	5	5	4	6	2	4	6	48	4.06
<b>Violent Crime</b>	<b>6</b>	<b>5</b>	<b>2</b>	<b>3</b>	<b>5</b>	<b>6</b>	<b>7</b>	<b>4</b>	<b>8</b>	<b>7</b>	<b>7</b>	<b>6</b>	<b>66</b>	<b>5.58</b>
<b>Burglary</b>	20	11	10	7	9	14	17	13	15	8	11	8	143	12.09
<b>Theft</b>	38	38	50	43	36	44	28	38	46	45	36	48	490	41.44
<b>Motor Vehicle Theft</b>	1	2	3	4	1	4	2	4	3	1	2	2	29	2.45
<b>Arson</b>	1	1	0	1	0	0	0	0	0	0	1	0	4	0.34
<b>Property Crime</b>	<b>60</b>	<b>52</b>	<b>63</b>	<b>55</b>	<b>46</b>	<b>62</b>	<b>47</b>	<b>55</b>	<b>64</b>	<b>54</b>	<b>50</b>	<b>58</b>	<b>666</b>	<b>56.32</b>
<b>Total Part I Crime</b>	<b>66</b>	<b>57</b>	<b>65</b>	<b>58</b>	<b>51</b>	<b>68</b>	<b>54</b>	<b>59</b>	<b>72</b>	<b>61</b>	<b>57</b>	<b>64</b>	<b>732</b>	<b>61.90</b>
<b>Crime Rate Per 1,000</b>	<b>5.58</b>	<b>4.82</b>	<b>5.50</b>	<b>4.90</b>	<b>4.31</b>	<b>5.75</b>	<b>4.57</b>	<b>4.99</b>	<b>6.09</b>	<b>5.16</b>	<b>4.82</b>	<b>5.41</b>	<b>61.90</b>	
<b>Assault</b>	17	9	8	20	24	24	22	25	16	11	19	20	215	18.18
<b>Drug Offenses</b>	1	3	4	4	3	5	5	5	7	4	5	17	63	5.33
<b>Accidents w/injuries</b>	3	3	1	2	1	5	4	3	6	7	1	2	38	3.21
<b>Accidents w/o injuries</b>	10	5	19	7	10	7	8	9	18	18	15	17	143	12.09
<b>Fatal accidents</b>	0	0	0	0	0	0	0	0	0	0	0	0	0	0.00
<b>Traffic - Civil/Criminal</b>	33	48	77	94	161	90	112	110	84	113	95	98	1,115	94.29
<b>DUI arrests</b>	0	5	5	7	4	1	4	3	7	5	6	2	49	4.14

### 2013 UNIFORM CRIME REPORT



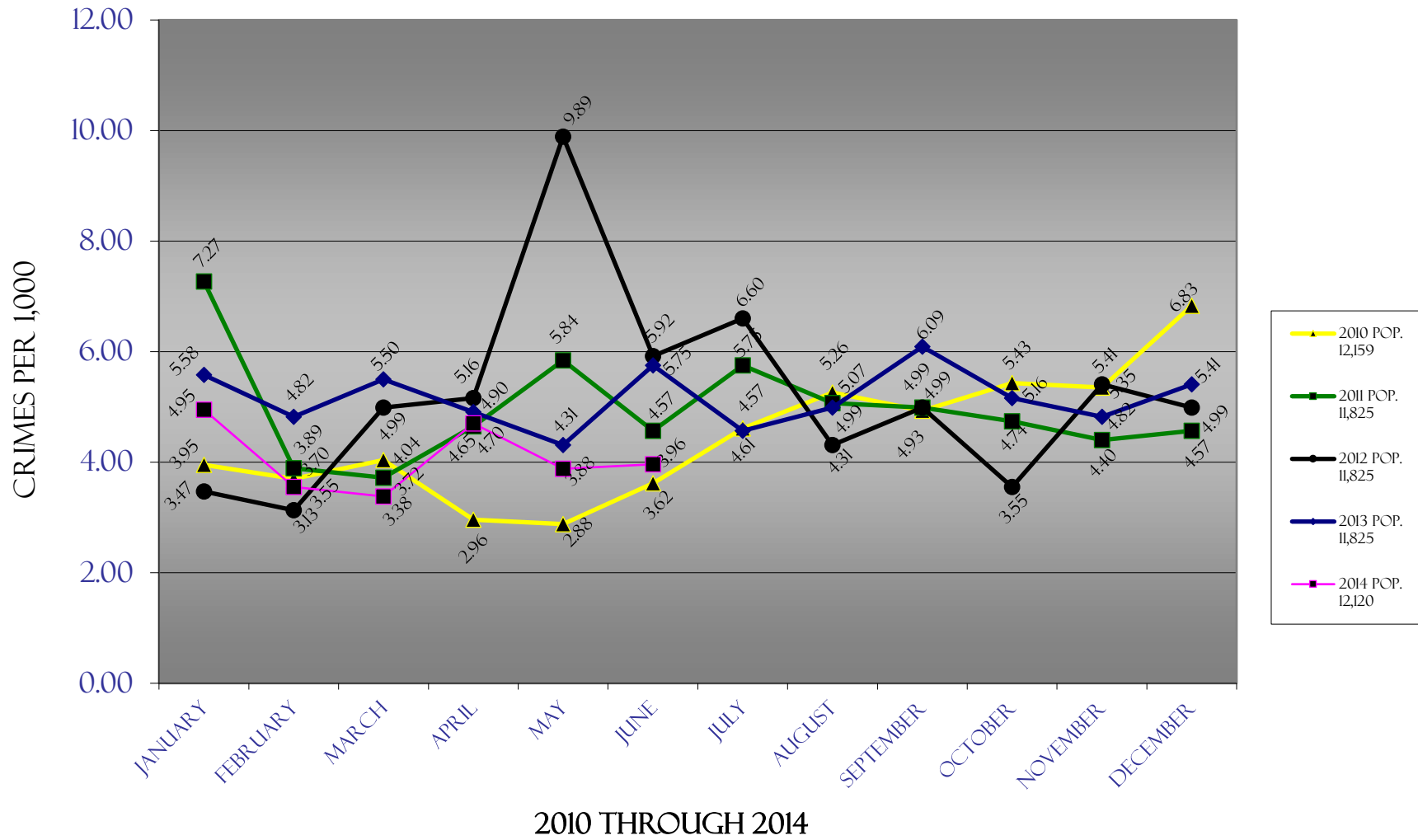
The eight crimes listed at the top of the report are Part I crimes reported for statistical purposes to the Department of Public Safety and the FBI.  
 The rate is calculated using the 2010 Census population of 11,825

# UCR CRIMES



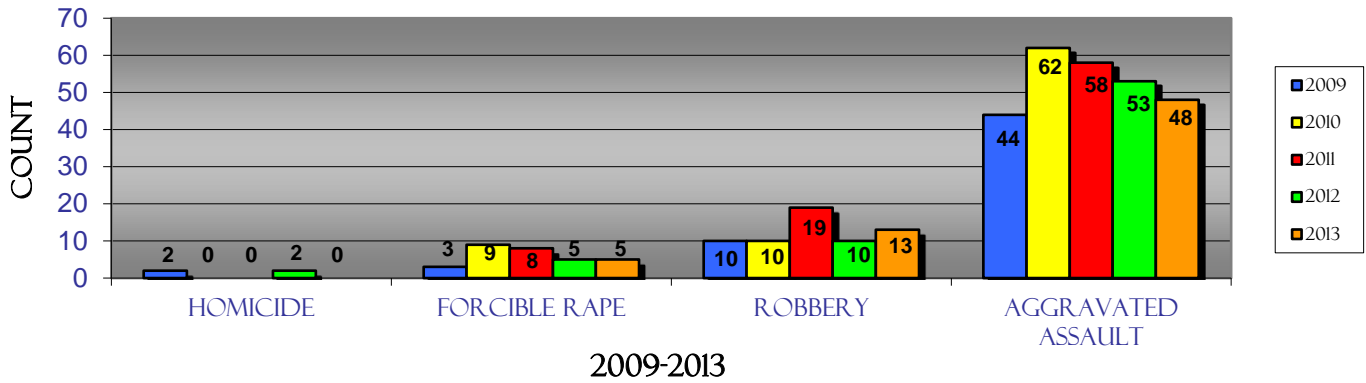
2013 COMPARED TO 2014

## TO-DATE CRIME RATE COMPARISON

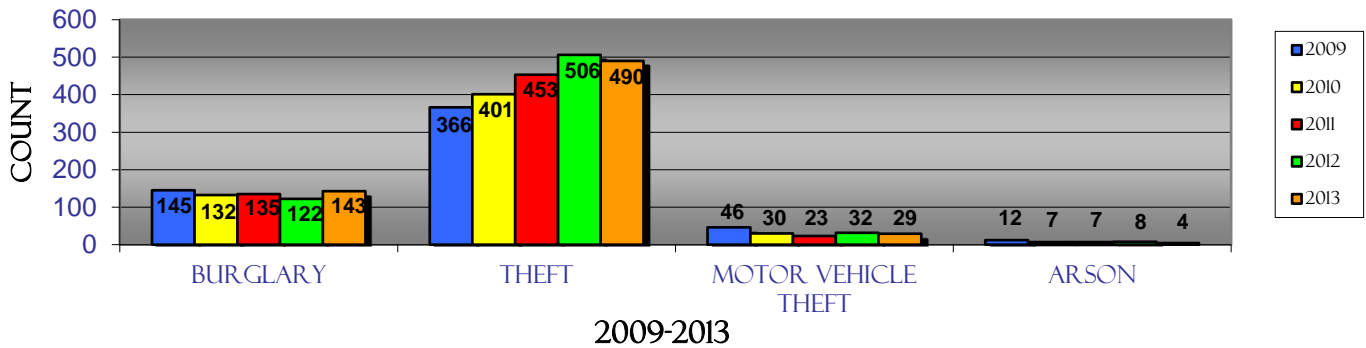


# PART I CRIMES FIVE-YEAR COMPARISON

## CITY OF COOLIDGE VIOLENT CRIMES



## CITY OF COOLIDGE PROPERTY CRIMES





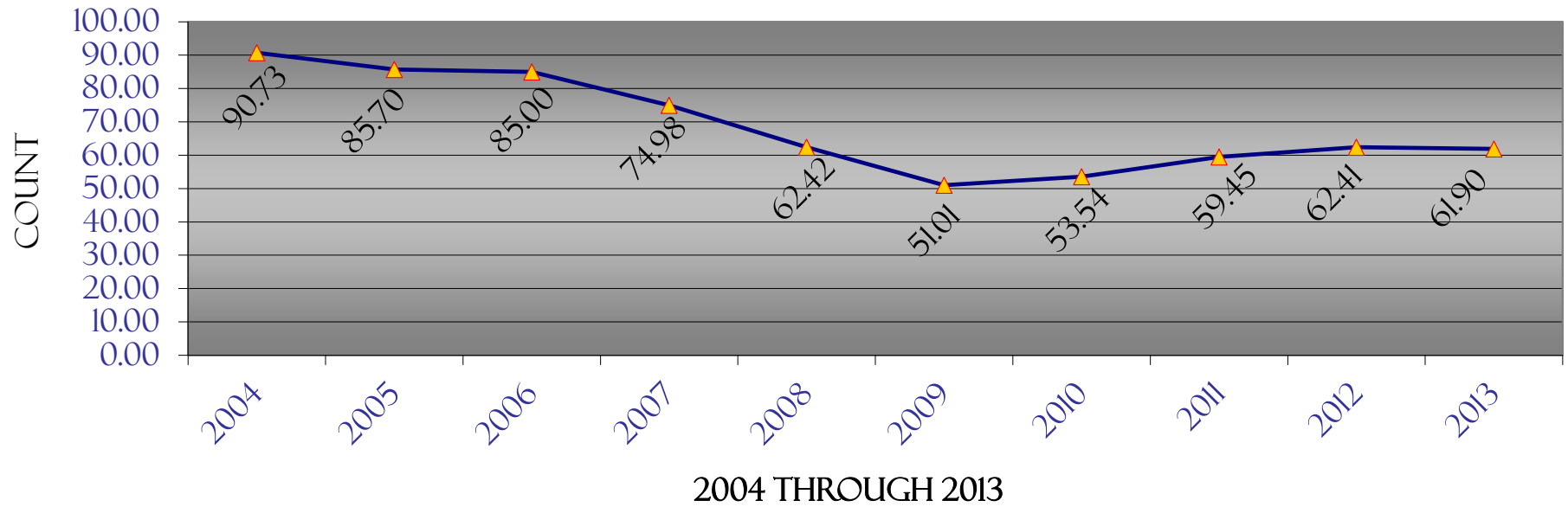
# COOLIDGE POLICE DEPARTMENT

## UNIFORM CRIME REPORT

### HISTORICAL DATA

	January	February	March	April	May	June	July	August	September	October	November	December	Total	Rate/1,000
<b>2004</b>	68	47	73	47	59	69	62	77	62	54	55	66	739	90.73
<b>2005</b>	47	56	81	65	52	36	71	56	57	61	48	68	698	85.70
<b>2006</b>	76	63	92	78	70	79	52	85	76	56	71	86	884	85.00
<b>2007</b>	86	96	60	77	62	77	66	59	69	68	78	71	869	74.98
<b>2008</b>	79	42	43	54	47	44	48	84	86	94	58	78	757	62.42
<b>2009</b>	75	66	62	58	30	52	49	35	53	57	47	44	628	51.01
<b>2010</b>	48	45	49	36	35	44	56	64	60	66	65	83	651	53.54
<b>2011</b>	86	46	44	55	69	54	68	60	59	56	52	54	703	59.45
<b>2012</b>	41	37	59	61	117	70	78	51	59	42	64	59	738	62.41
<b>2013</b>	66	57	65	58	51	68	54	59	72	61	57	64	732	61.90
<b>2014</b>	60	43	41	57	47	48							296	24.42
<b>% Change from last year</b>	<b>-9.09</b>	<b>-24.56</b>	<b>-36.92</b>	<b>-1.72</b>	<b>-7.84</b>	<b>-29.41</b>								

CRIMES PER 1,000 HISTORICALLY

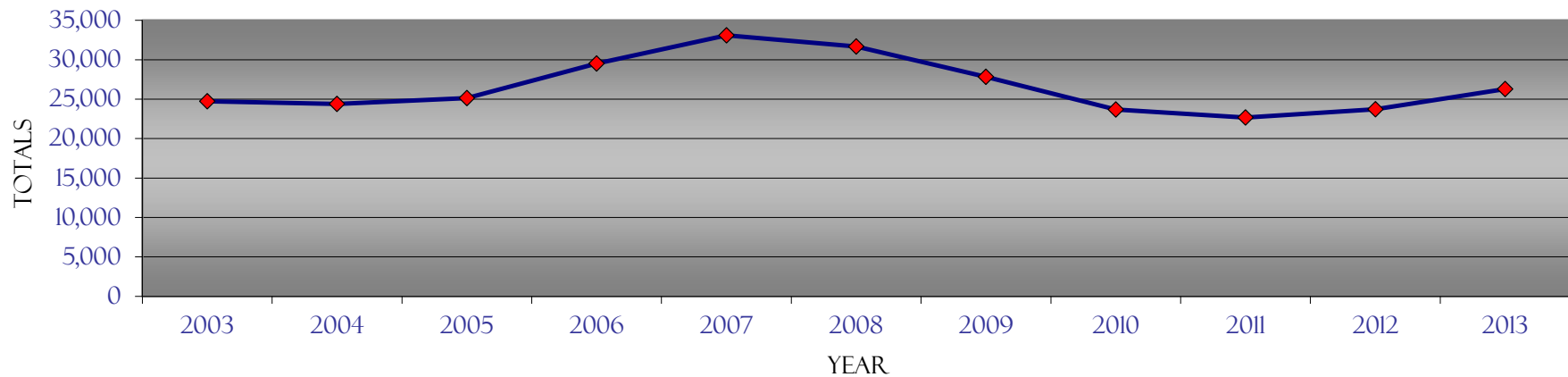


# COOLIDGE POLICE DEPARTMENT

## CALLS FOR SERVICE HISTORICAL DATA

<i>CFs</i>	<i>Jan</i>	<i>Feb</i>	<i>Mar</i>	<i>Apr</i>	<i>May</i>	<i>Jun</i>	<i>Jul</i>	<i>Aug</i>	<i>Sep</i>	<i>Oct</i>	<i>Nov</i>	<i>Dec</i>	<i>Totals</i>
<b>2003</b>	2,268	1,989	2,181	2,131	2,296	2,140	2,004	1,957	1,963	1,977	1,872	1,947	24,725
<b>2004</b>	2,172	1,911	2,056	2,132	2,011	1,930	2,029	2,129	1,967	2,193	1,876	1,994	24,400
<b>2005</b>	2,146	2,047	2,348	1,991	2,198	2,071	2,105	1,986	2,154	2,091	1,982	2,033	25,152
<b>2006</b>	2,044	2,245	2,414	2,373	2,484	2,249	2,604	2,839	2,695	2,710	2,276	2,591	29,524
<b>2007</b>	2,945	2,795	2,788	2,620	2,630	2,874	2,648	2,928	2,751	2,946	2,550	2,621	33,096
<b>2008</b>	2,762	2,728	2,776	2,941	3,213	2,373	2,551	2,663	2,624	2,442	2,333	2,264	31,670
<b>2009</b>	2,460	2,043	2,460	2,352	2,242	2,112	2,600	2,441	2,214	2,499	2,099	2,324	27,846
<b>2010</b>	2,203	1,765	2,087	2,055	1,919	1,948	2,045	1,993	2,025	1,988	1,764	1,897	23,689
<b>2011</b>	1,992	1,888	1,819	1,957	2,104	1,750	1,929	1,930	1,869	1,828	1,816	1,787	22,669
<b>2012</b>	1,715	1,781	2,097	1,929	2,233	1,978	1,943	2,041	2,102	1,897	1,925	2,087	23,728
<b>2013</b>	1,968	1,726	2,169	2,109	2,264	1,936	2,241	2,676	2,413	2,423	2,115	2,255	26,295
<b>2014</b>	2,011	1,816	2,122	2,074	2,184	1,788							
<b>% Change from last year</b>	2.18	5.21	-2.17	-1.66	-3.53	-7.64							

CALLS FOR SERVICE TOTALS BY YEAR



# CITATIONS HISTORICAL DATA

	<b>Criminal Traffic</b>	<b>Civil Traffic</b>	<b>Criminal</b>	<b>Warning</b>	<b>Totals</b>
July-13	28	84	37	55	204
August-13	20	90	47	20	177
September-13	23	61	40	38	162
October-13	26	93	31	58	208
November-13	32	63	30	32	157
December-13	27	71	32	31	161
January-14	16	58	22	36	132
February-14	16	74	34	39	163
March-14	28	64	26	71	189
April-14	23	73	36	28	160
May-14	34	190	37	89	350
June-14	17	49	29	48	143
% Change from last month	-50.00	-74.21	-21.62	-46.07	-59.14
<b>Total</b>	<b>290</b>	<b>970</b>	<b>401</b>	<b>545</b>	<b>2206</b>

\*note: small numbers create large percentages

n/c = not calculable

# ARRESTS HISTORICAL DATA

	<b>Felony</b>		<b>Misdemeanor</b>		<b>Warrant</b>		<b>Status Offense</b>		<b>Totals</b>	
	<b>Juv .</b>	<b>Adult</b>	<b>Juv.</b>	<b>Adult</b>	<b>Juv.</b>	<b>Adult</b>	<b>Juv.</b>	<b>Adult</b>	<b>Juv.</b>	<b>Adult</b>
July-13	0	14	9	41	2	35	1	0	12	90
August-13	1	11	6	56	0	44	2	0	9	111
September-13	1	20	19	53	1	49	4	1	25	123
October-13	3	21	12	45	1	51	2	1	18	118
November-13	1	17	10	42	0	46	0	0	11	105
December-13	3	18	9	51	0	43	0	0	12	112
January-14	3	8	14	21	1	28	0	0	18	57
February-14	3	11	7	38	0	28	5	1	15	78
March-14	4	9	15	22	0	43	2	0	21	74
April-14	3	10	13	49	1	33	0	0	17	92
May-14	1	11	18	45	0	47	0	0	19	103
June-14	1	2	5	32	0	36	4	2	10	72
% Change from last month	0.00	-81.82	-72.22	-28.89	n/c	-23.40	n/c	n/c	-47.37	-30.10
<b>Total</b>	<b>24</b>	<b>152</b>	<b>137</b>	<b>495</b>	<b>6</b>	<b>483</b>	<b>20</b>	<b>5</b>	<b>187</b>	<b>1135</b>

\*note: small numbers create large percentages

n/c = not calculable