

# COOLIDGE POLICE DEPARTMENT



## Monthly Activity Report

---

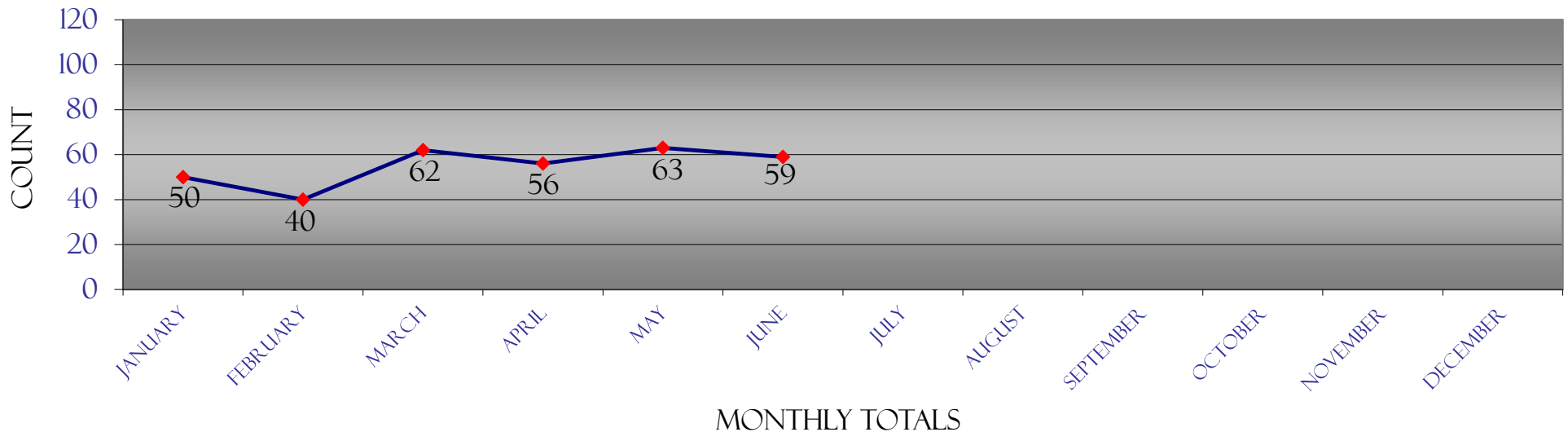
June  
2015

# COOLIDGE POLICE DEPARTMENT

## 2015 UNIFORM CRIME REPORT & TRAFFIC DATA

2015	January	February	March	April	May	June	July	August	September	October	November	December	Totals	Rate/1,000
<b>Homicide</b>	0	0	0	0	0	0							<b>0</b>	<b>0.00</b>
<b>Forcible Rape</b>	0	0	0	1	0	0							<b>1</b>	<b>0.08</b>
<b>Robbery</b>	4	0	1	0	1	0							<b>6</b>	<b>0.50</b>
<b>Agg. Assault</b>	0	2	1	4	13	6							<b>26</b>	<b>2.16</b>
<b>Violent Crime</b>	<b>4</b>	<b>2</b>	<b>2</b>	<b>5</b>	<b>14</b>	<b>6</b>							<b>33</b>	<b>2.74</b>
<b>Burglary</b>	4	8	9	8	7	8							<b>44</b>	<b>3.66</b>
<b>Theft</b>	41	28	51	42	36	42							<b>240</b>	<b>19.96</b>
<b>Motor Vehicle Theft</b>	1	2	0	1	6	3							<b>13</b>	<b>1.08</b>
<b>Arson</b>	0	0	0	0	0	0							<b>0</b>	<b>0.00</b>
<b>Property Crime</b>	<b>46</b>	<b>38</b>	<b>60</b>	<b>51</b>	<b>49</b>	<b>53</b>							<b>297</b>	<b>24.69</b>
<b>Total Part I Crime</b>	<b>50</b>	<b>40</b>	<b>62</b>	<b>56</b>	<b>63</b>	<b>59</b>							<b>330</b>	<b>27.44</b>
<b>Crime Rate Per 1,000</b>	<b>4.16</b>	<b>3.33</b>	<b>5.16</b>	<b>4.66</b>	<b>5.24</b>	<b>4.91</b>							<b>27.44</b>	
<b>Assault</b>	17	19	12	22	11	18							<b>99</b>	<b>8.23</b>
<b>Drug Offenses</b>	4	11	1	2	2	1							<b>21</b>	<b>1.75</b>
<b>Accidents w/injuries</b>	3	1	7	10	8	6							<b>35</b>	<b>2.91</b>
<b>Accidents w/o injuries</b>	13	16	10	16	17	10							<b>82</b>	<b>6.82</b>
<b>Fatal accidents</b>	1	1	0	0	0	0							<b>2</b>	<b>0.17</b>
<b>Traffic - Civil/Criminal</b>	151	77	104	133	168	78							<b>711</b>	<b>59.12</b>
<b>DUI arrests</b>	3	3	3	3	9	5							<b>26</b>	<b>2.16</b>

### 2015 UNIFORM CRIME REPORT



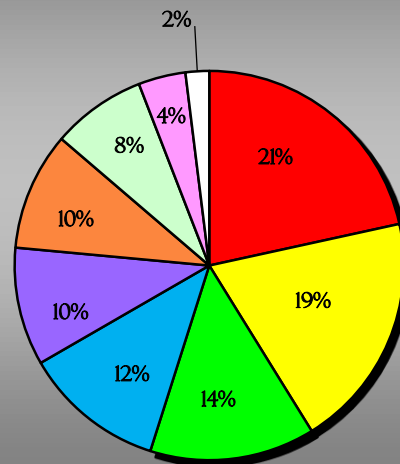
The eight crimes listed at the top of the report are Part I crimes reported for statistical purposes to the Department of Public Safety and the FBI.  
 The rate is calculated using population estimates of 12,027 provided by Office of Employment & Population Statistics, Arizona Department of Administration

# COOLIDGE POLICE DEPARTMENT

## 2015 JUVENILE ACTIVITY & ARRESTS REPORT

<b>Part I Crimes</b>	<b>January</b>	<b>February</b>	<b>March</b>	<b>April</b>	<b>May</b>	<b>June</b>	<b>July</b>	<b>August</b>	<b>September</b>	<b>October</b>	<b>November</b>	<b>December</b>	<b>Totals</b>
Homicide	0	0	0	0	0	0							0
Forcible Rape	0	0	0	0	0	0							0
Robbery	0	0	0	0	0	0							0
Agg. Assault	0	0	0	0	0	0							0
Burglary	0	0	0	0	0	1							1
Theft	2	1	3	4	0	1							11
Motor Vehicle Theft	0	0	0	0	0	0							0
Arson	0	0	0	0	0	0							0
<b>Totals</b>	<b>2</b>	<b>1</b>	<b>3</b>	<b>4</b>	<b>0</b>	<b>2</b>	<b>0</b>	<b>0</b>	<b>0</b>	<b>0</b>	<b>0</b>	<b>0</b>	<b>12</b>
<b>Part II Crimes</b>													
Other Assault	0	0	1	1	2	0							4
Weapons Offense	0	0	0	0	0	0							0
Vandalism	0	0	0	1	0	1							2
Disorderly Conduct	3	0	0	1	0	1							5
Sex Offenses (ex. Rape or Prost.)	0	0	0	0	0	0							0
Drug Offenses	0	7	0	0	0	0							7
DUI arrests	0	0	0	0	1	0							1
Liquor Law Violations	0	0	1	3	1	1							6
Curfew and Loitering	0	0	0	0	0	5							5
Runaways	1	1	1	5	2	0							10

YTD 2015  
JUVENILE ACTIVITY



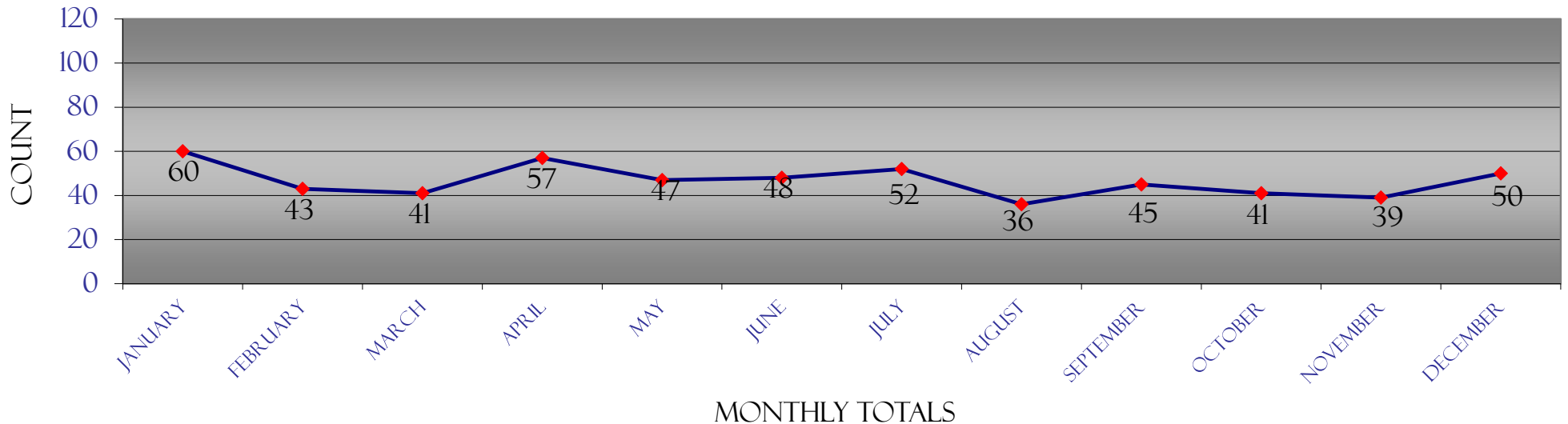
- THEFT
- RUNAWAYS
- DRUG OFFENSES
- LIQUOR LAW VIOLATIONS
- DISORDERLY CONDUCT
- CURFEW AND LOITERING
- OTHER ASSAULT
- VANDALISM
- DUI ARRESTS

# COOLIDGE POLICE DEPARTMENT

## 2014 UNIFORM CRIME REPORT & TRAFFIC DATA

2014	January	February	March	April	May	June	July	August	September	October	November	December	Totals	Rate/1,000
<b>Homicide</b>	0	0	0	0	0	0	0	0	0	0	0	0	<b>0</b>	<b>0.00</b>
<b>Forcible Rape</b>	0	0	0	1	0	1	0	0	3	0	0	0	<b>5</b>	<b>0.41</b>
<b>Robbery</b>	0	0	1	2	3	2	1	1	1	0	1	0	<b>12</b>	<b>0.99</b>
<b>Agg. Assault</b>	3	3	2	3	4	1	0	1	4	4	0	4	<b>29</b>	<b>2.39</b>
<b>Violent Crime</b>	<b>3</b>	<b>3</b>	<b>3</b>	<b>6</b>	<b>7</b>	<b>4</b>	<b>1</b>	<b>2</b>	<b>8</b>	<b>4</b>	<b>1</b>	<b>4</b>	<b>46</b>	<b>4</b>
<b>Burglary</b>	14	8	7	10	3	6	5	4	8	5	4	7	<b>81</b>	<b>6.68</b>
<b>Theft</b>	43	32	29	39	33	37	42	24	26	30	32	35	<b>402</b>	<b>33.17</b>
<b>Motor Vehicle Theft</b>	0	0	2	1	4	1	4	1	3	2	2	4	<b>24</b>	<b>1.98</b>
<b>Arson</b>	0	0	0	1	0	0	0	5	0	0	0	0	<b>6</b>	<b>0.50</b>
<b>Property Crime</b>	<b>57</b>	<b>40</b>	<b>38</b>	<b>51</b>	<b>40</b>	<b>44</b>	<b>51</b>	<b>34</b>	<b>37</b>	<b>37</b>	<b>38</b>	<b>46</b>	<b>513</b>	<b>42.33</b>
<b>Total Part I Crime</b>	<b>60</b>	<b>43</b>	<b>41</b>	<b>57</b>	<b>47</b>	<b>48</b>	<b>52</b>	<b>36</b>	<b>45</b>	<b>41</b>	<b>39</b>	<b>50</b>	<b>559</b>	<b>46.12</b>
<b>Crime Rate Per 1,000</b>	<b>4.95</b>	<b>3.55</b>	<b>3.38</b>	<b>4.70</b>	<b>3.88</b>	<b>3.96</b>	<b>4.29</b>	<b>2.97</b>	<b>3.71</b>	<b>3.38</b>	<b>3.22</b>	<b>4.13</b>	<b>46.12</b>	
<b>Assault</b>	15	9	17	17	14	9	19	19	29	23	12	13	<b>196</b>	<b>16.17</b>
<b>Drug Offenses</b>	10	4	4	2	2	1	6	3	3	3	7	2	<b>47</b>	<b>3.88</b>
<b>Accidents w/injuries</b>	3	6	3	3	3	4	1	3	5	6	3	2	<b>42</b>	<b>3.47</b>
<b>Accidents w/o injuries</b>	9	14	12	11	9	10	10	10	8	11	16	10	<b>130</b>	<b>10.73</b>
<b>Fatal accidents</b>	0	0	0	0	0	0	0	0	0	1	0	0	<b>1</b>	<b>0.08</b>
<b>Traffic - Civil/Criminal</b>	33	90	92	96	224	66	88	73	130	120	108	90	<b>1,210</b>	<b>99.83</b>
<b>DUI arrests</b>	3	2	10	7	4	2	2	3	10	12	16	8	<b>79</b>	<b>6.52</b>

### 2014 UNIFORM CRIME REPORT



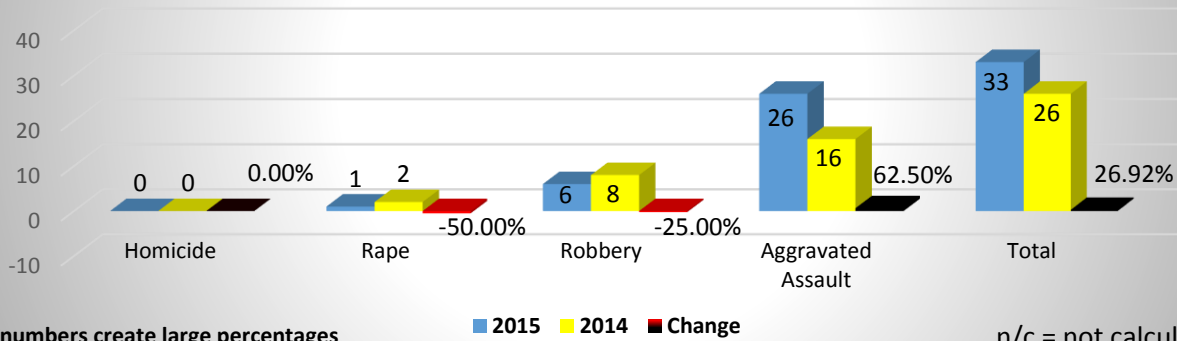
The eight crimes listed at the top of the report are Part I crimes reported for statistical purposes to the Department of Public Safety and the FBI.  
 The rate is calculated using population estimates of 12,120 provided by Office of Employment & Population Statistics, Arizona Department of Administration

# COOLIDGE POLICE DEPARTMENT

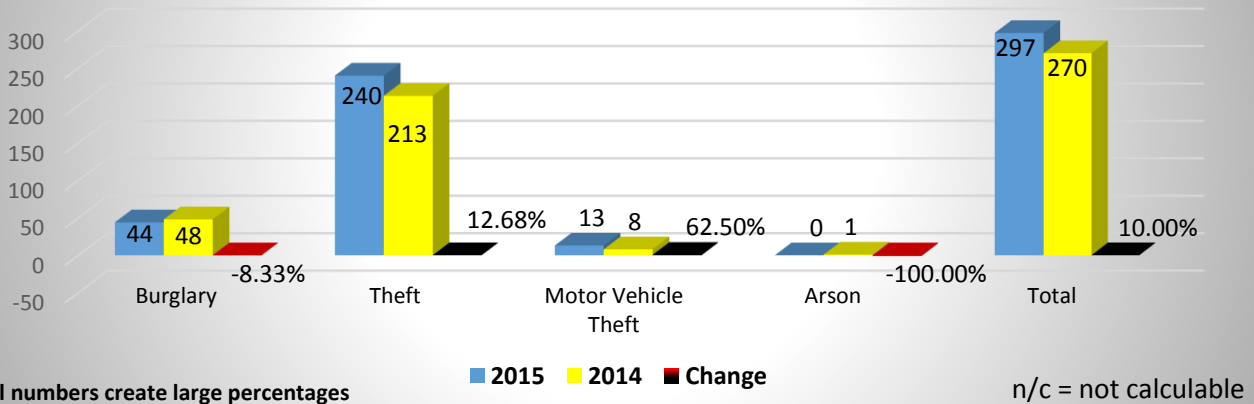
## YEAR TO DATE CRIME COMPARISON

### JUNE 2015

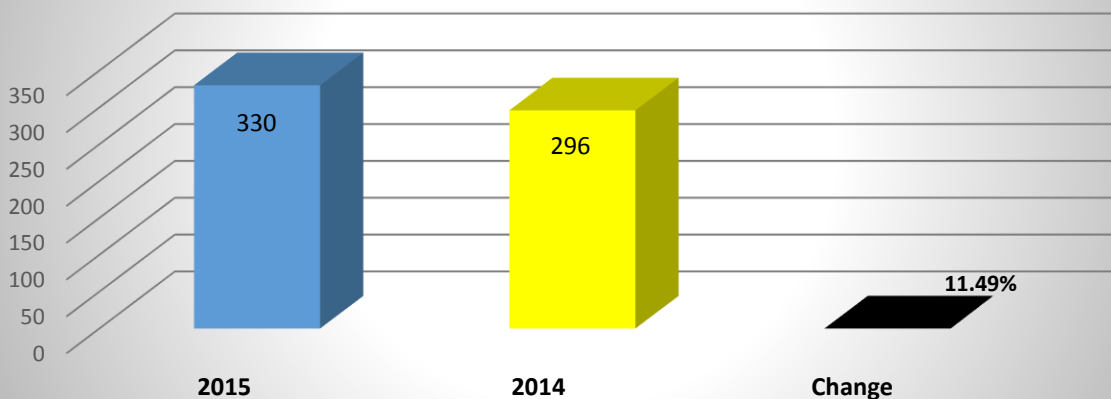
#### Violent Crimes 2015 -2014 YTD Change



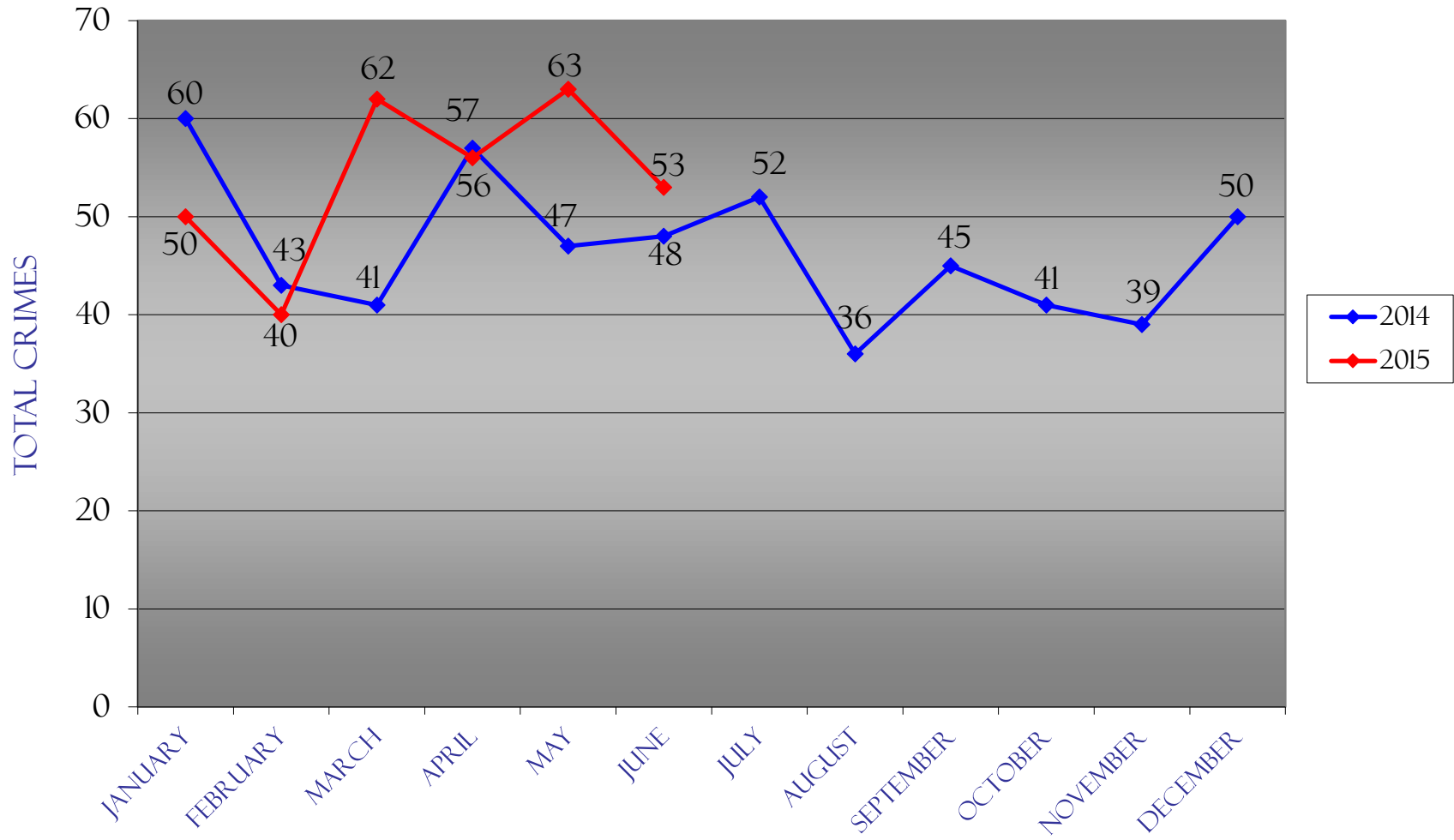
#### Property Crimes 2015-2014 YTD Change



#### Total Crimes 2015-2014 YTD Change



# UCR CRIMES



2014 COMPARED TO 2015

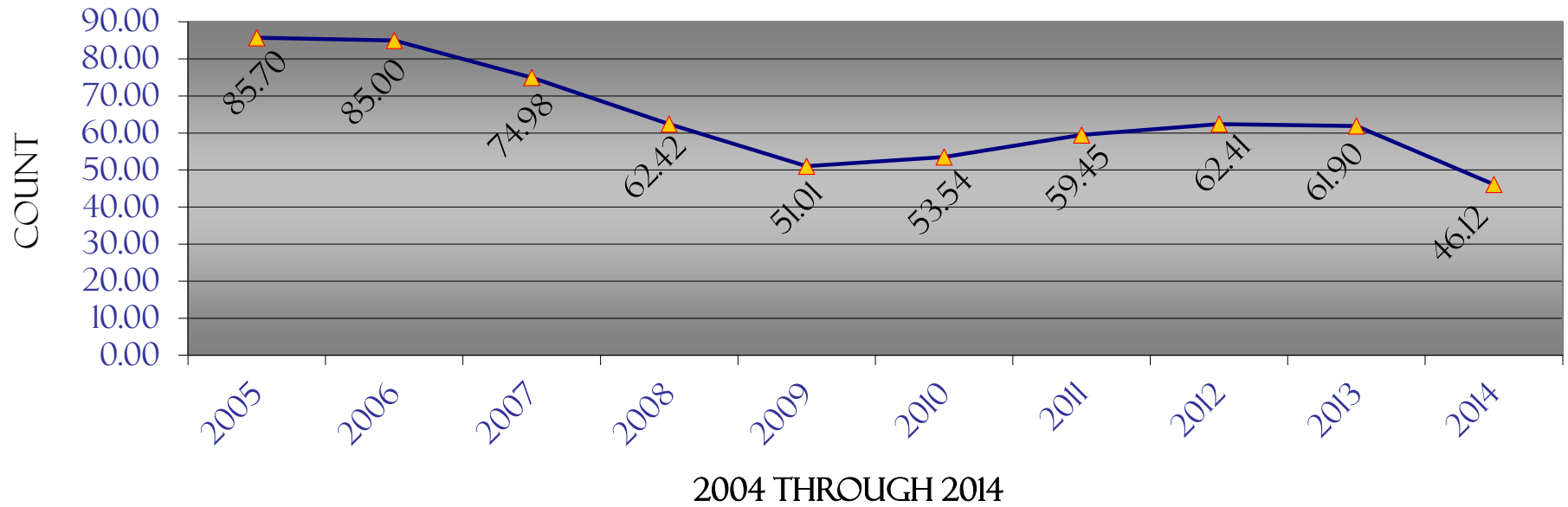
# COOLIDGE POLICE DEPARTMENT

## UNIFORM CRIME REPORT

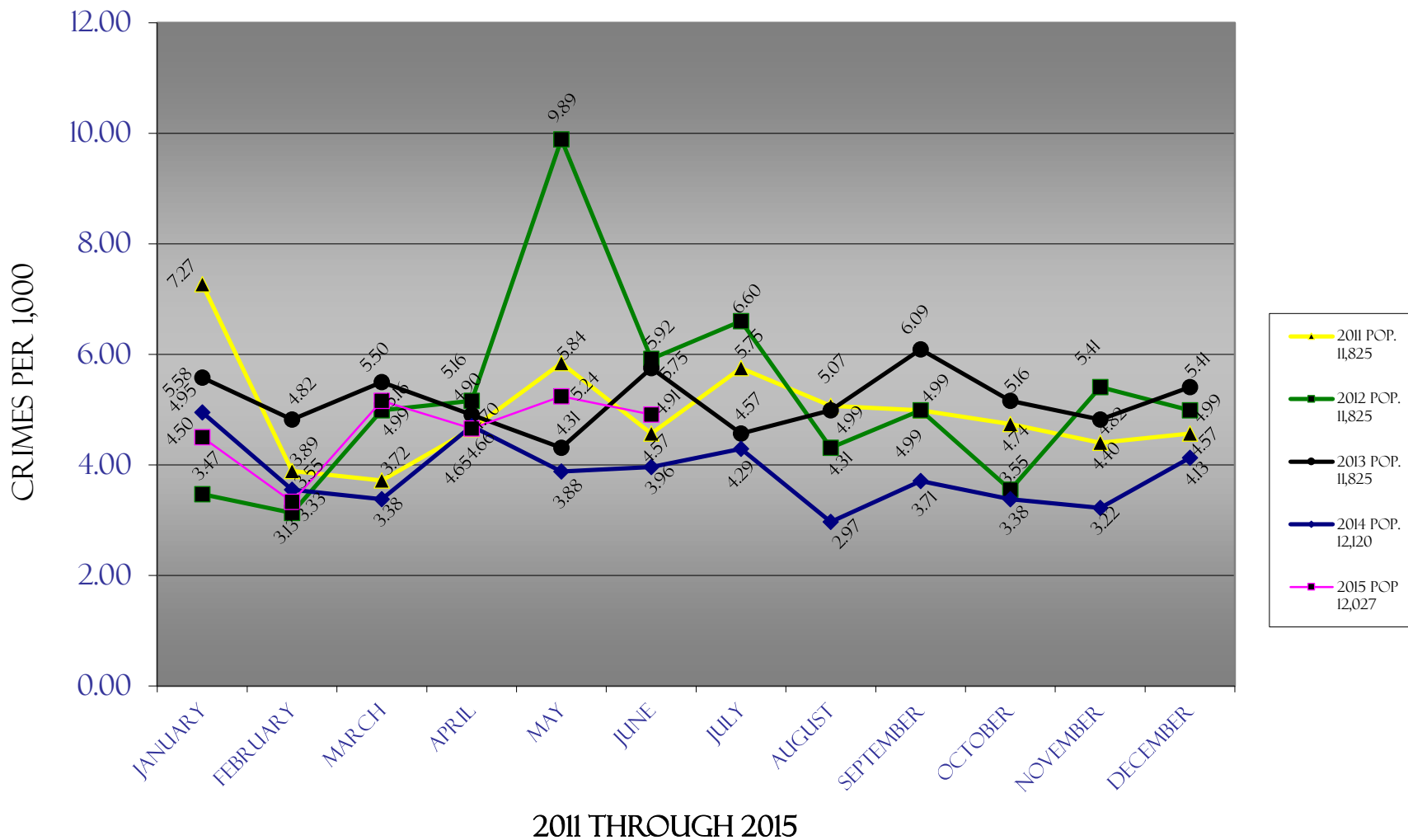
### HISTORICAL DATA

	January	February	March	April	May	June	July	August	September	October	November	December	Total	Rate/1,000
<b>2005</b>	47	56	81	65	52	36	71	56	57	61	48	68	698	85.70
<b>2006</b>	76	63	92	78	70	79	52	85	76	56	71	86	884	85.00
<b>2007</b>	86	96	60	77	62	77	66	59	69	68	78	71	869	74.98
<b>2008</b>	79	42	43	54	47	44	48	84	86	94	58	78	757	62.42
<b>2009</b>	75	66	62	58	30	52	49	35	53	57	47	44	628	51.01
<b>2010</b>	48	45	49	36	35	44	56	64	60	66	65	83	651	53.54
<b>2011</b>	86	46	44	55	69	54	68	60	59	56	52	54	703	59.45
<b>2012</b>	41	37	59	61	117	70	78	51	59	42	64	59	738	62.41
<b>2013</b>	66	57	65	58	51	68	54	59	72	61	57	64	732	61.90
<b>2014</b>	60	43	41	57	47	48	52	36	45	41	39	50	559	46.12
<b>2015</b>	50	40	62	56	63	53							324	26.73
<b>% Change from last year</b>	<b>-16.67</b>	<b>-6.98</b>	<b>51.22</b>	<b>-1.75</b>	<b>34.04</b>	<b>10.42</b>								

CRIMES PER 1,000 HISTORICALLY



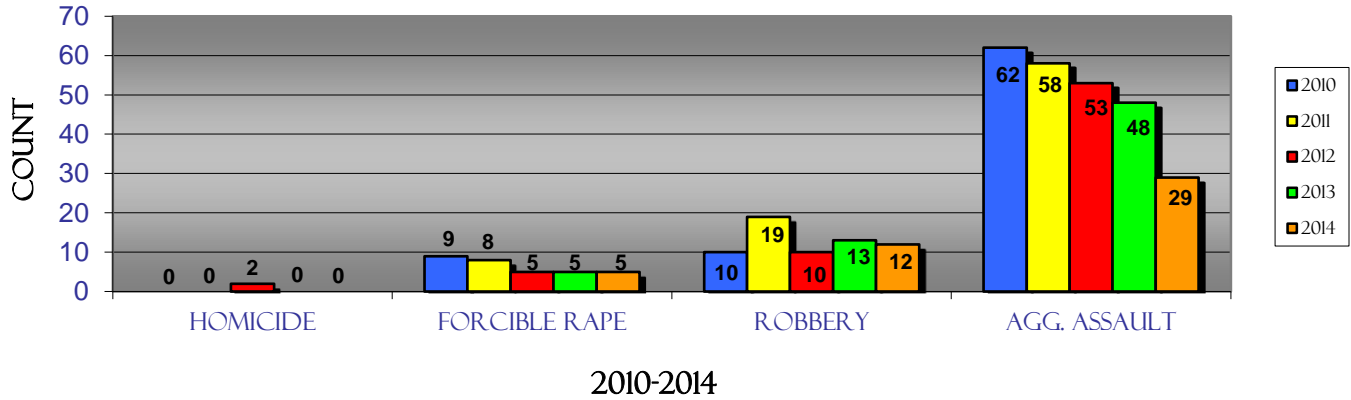
### TO-DATE CRIME RATE COMPARISON



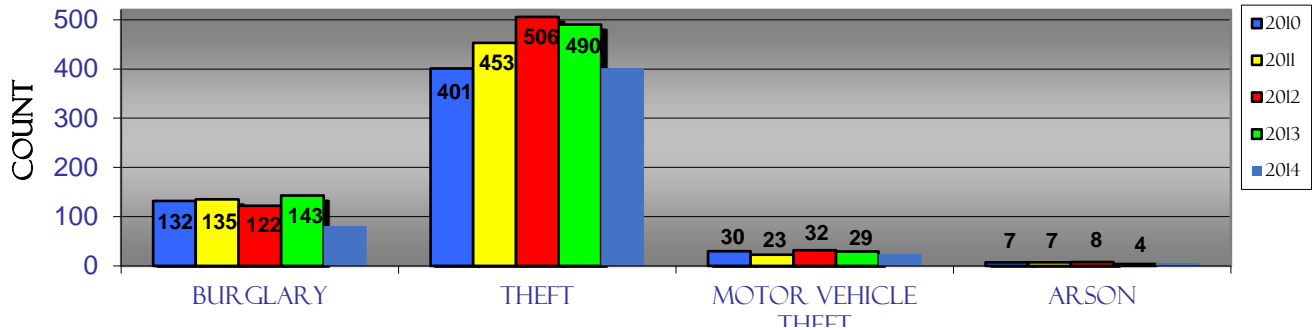


# PART I CRIMES FIVE-YEAR COMPARISON

## CITY OF COOLIDGE VIOLENT CRIMES



## CITY OF COOLIDGE PROPERTY CRIMES

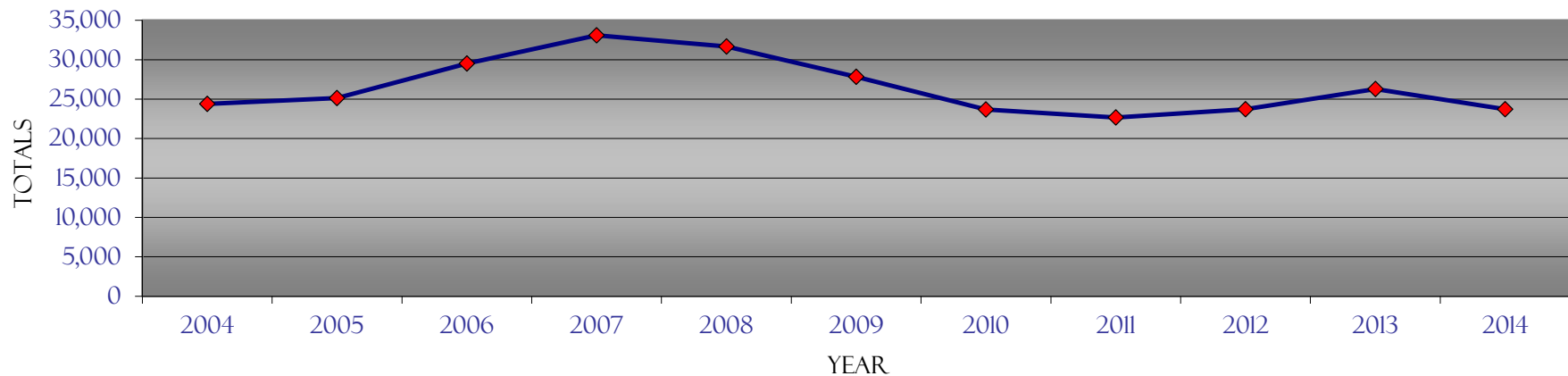


# COOLIDGE POLICE DEPARTMENT

## CALLS FOR SERVICE HISTORICAL DATA

<i>CFs</i>	<i>Jan</i>	<i>Feb</i>	<i>Mar</i>	<i>Apr</i>	<i>May</i>	<i>Jun</i>	<i>Jul</i>	<i>Aug</i>	<i>Sep</i>	<i>Oct</i>	<i>Nov</i>	<i>Dec</i>	<i>Totals</i>
<b>2004</b>	2,172	1,911	2,056	2,132	2,011	1,930	2,029	2,129	1,967	2,193	1,876	1,994	24,400
<b>2005</b>	2,146	2,047	2,348	1,991	2,198	2,071	2,105	1,986	2,154	2,091	1,982	2,033	25,152
<b>2006</b>	2,044	2,245	2,414	2,373	2,484	2,249	2,604	2,839	2,695	2,710	2,276	2,591	29,524
<b>2007</b>	2,945	2,795	2,788	2,620	2,630	2,874	2,648	2,928	2,751	2,946	2,550	2,621	33,096
<b>2008</b>	2,762	2,728	2,776	2,941	3,213	2,373	2,551	2,663	2,624	2,442	2,333	2,264	31,670
<b>2009</b>	2,460	2,043	2,460	2,352	2,242	2,112	2,600	2,441	2,214	2,499	2,099	2,324	27,846
<b>2010</b>	2,203	1,765	2,087	2,055	1,919	1,948	2,045	1,993	2,025	1,988	1,764	1,897	23,689
<b>2011</b>	1,992	1,888	1,819	1,957	2,104	1,750	1,929	1,930	1,869	1,828	1,816	1,787	22,669
<b>2012</b>	1,715	1,781	2,097	1,929	2,233	1,978	1,943	2,041	2,102	1,897	1,925	2,087	23,728
<b>2013</b>	1,968	1,726	2,169	2,109	2,264	1,936	2,241	2,676	2,413	2,423	2,115	2,255	26,295
<b>2014</b>	2,011	1,816	2,122	2,074	2,184	1,788	1,905	1,868	2,032	2,033	1,821	2,068	23,722
<b>2015</b>	2,115	2,399	2,584	2,501	2,586	2,276							
<b>% Change from last year</b>	<b>5.17</b>	<b>32.10</b>	<b>21.77</b>	<b>20.59</b>	<b>18.41</b>	<b>27.29</b>							

CALLS FOR SERVICE TOTALS BY YEAR



# CITATIONS HISTORICAL DATA

	<b>Criminal Traffic</b>	<b>Civil Traffic</b>	<b>Criminal</b>	<b>Warning</b>	<b>Totals</b>
June-14	17	49	29	48	143
July-14	14	74	31	43	162
August-14	13	60	40	30	143
September-14	45	85	40	41	211
October-14	43	77	21	53	194
November-14	44	64	24	34	166
December-14	25	65	16	75	181
January-15	25	126	38	66	255
February-15	22	55	34	40	151
March-15	35	70	42	34	181
April-15	28	105	60	62	255
May-15	40	128	40	91	299
% Change from last month	42.86	21.90	-33.33	46.77	17.25
<b>Total</b>	<b>351</b>	<b>958</b>	<b>415</b>	<b>617</b>	<b>2341</b>

\*note: small numbers create large percentages

n/c = not calculable

# ARRESTS HISTORICAL DATA

	<b>Felony</b>		<b>Misdemeanor</b>		<b>Warrant</b>		<b>Status Offense</b>		<b>Totals</b>	
	<b>Juv .</b>	<b>Adult</b>	<b>Juv.</b>	<b>Adult</b>	<b>Juv.</b>	<b>Adult</b>	<b>Juv.</b>	<b>Adult</b>	<b>Juv.</b>	<b>Adult</b>
June-14	1	2	5	32	0	36	4	2	10	72
July-14	5	13	3	40	0	34	1	0	9	87
August-14	1	9	8	44	3	21	1	0	13	74
September-14	3	8	11	54	0	25	2	0	16	87
October-14	3	8	10	40	0	36	0	3	13	87
November-14	0	15	10	36	0	31	1	0	11	82
December-14	1	7	8	30	0	33	1	1	10	71
January-15	2	6	6	37	2	24	1	0	11	67
February-15	2	9	8	34	0	23	0	0	10	66
March-15	0	6	6	53	0	35	1	0	7	94
April-15	0	11	13	63	2	38	0	1	15	113
May-15	0	14	7	45	0	21	0	0	7	80
% Change from last month	n/c	27.27	-46.15	-28.57	-100.00	-44.74	n/c	-100.00	-53.33	-29.20
<b>Total</b>	<b>18</b>	<b>108</b>	<b>95</b>	<b>508</b>	<b>7</b>	<b>357</b>	<b>12</b>	<b>7</b>	<b>132</b>	<b>980</b>

\*note: small numbers create large percentages

n/c = not calculable