

COOLIDGE POLICE DEPARTMENT



Monthly Activity Report

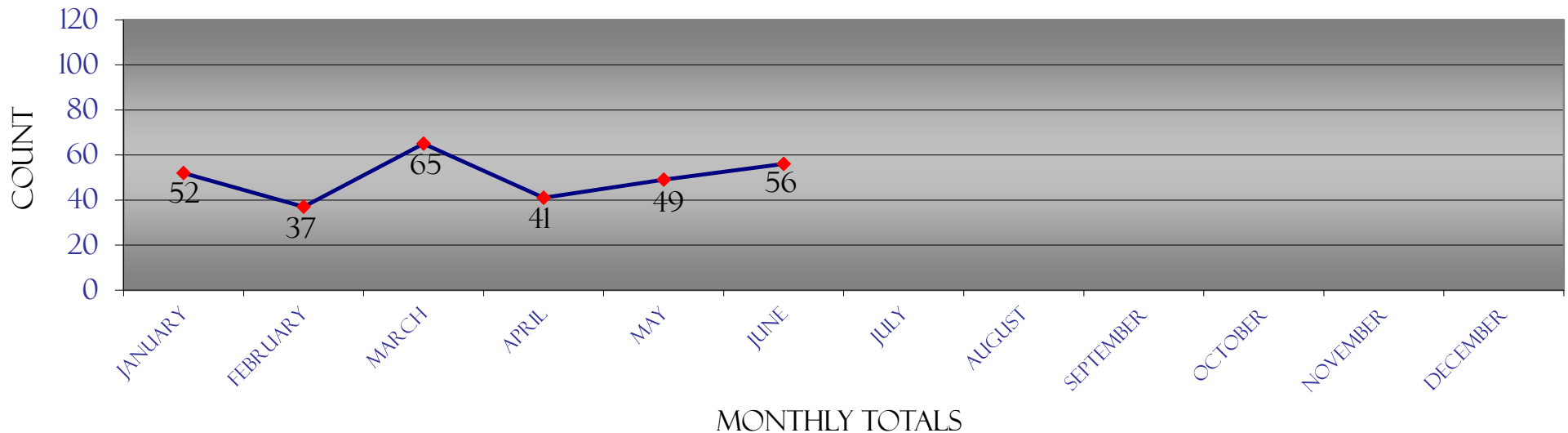
July
2017

COOLIDGE POLICE DEPARTMENT

2017 UNIFORM CRIME REPORT & TRAFFIC DATA

2017	January	February	March	April	May	June	July	August	September	October	November	December	Totals	Rate/1,000
Homicide	0	0	0	0	1	0							1	0.08
Forcible Rape	1	0	1	0	0	1							3	0.24
Robbery	0	0	1	0	0	1							2	0.16
Agg. Assault	4	2	2	1	4	0							13	1.06
Violent Crime	5	2	4	1	5	2							19	1.54
Burglary	10	6	16	4	3	8							47	3.82
Theft	35	26	39	32	39	43							214	17.38
Motor Vehicle Theft	2	3	5	4	2	3							19	1.54
Arson	0	0	1	0	0	0							1	0.08
Property Crime	47	35	61	40	44	54							281	22.83
Total Part I Crime	52	37	65	41	49	56							300	24.37
Crime Rate Per 1,000	4.22	3.01	5.28	3.33	3.98	4.55							24.37	
Assault	21	14	19	14	13	15							96	7.80
Drug Offenses	5	5	8	5	5	0							28	2.27
Accidents w/injuries	6	4	7	7	4	5							33	2.68
Accidents w/o injuries	15	13	19	14	12	10							83	6.74
Fatal accidents	1	0	0	0	0	0							1	0.08
Traffic - Civil/Criminal	152	107	130	135	147	99							770	62.55
DUI arrests	6	3	7	5	3	6							30	2.44

2017 UNIFORM CRIME REPORT



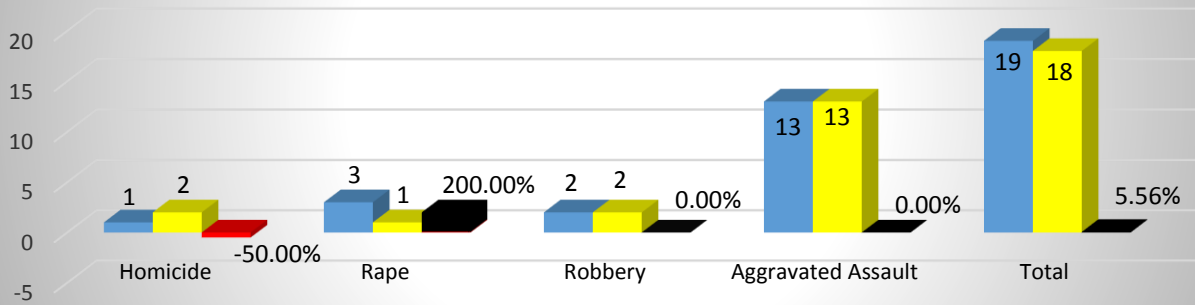
The eight crimes listed at the top of the report are Part I crimes reported for statistical purposes to the Department of Public Safety and the FBI.
 The rate is calculated using population estimates of 12,311 provided by Office of Employment & Population Statistics, Arizona Department of Administration

COOLIDGE POLICE DEPARTMENT

YEAR TO DATE CRIME COMPARISON

JUNE 2017

Violent Crimes 2017 -2016 YTD Change

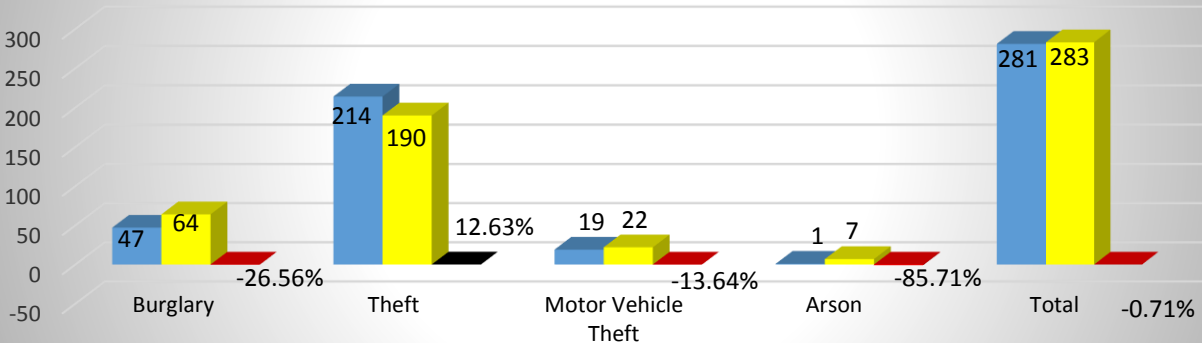


*small numbers create large percentages

■ 2017 ■ 2016 ■ Change

n/c = not calculable

Property Crimes 2017-2016 YTD Change

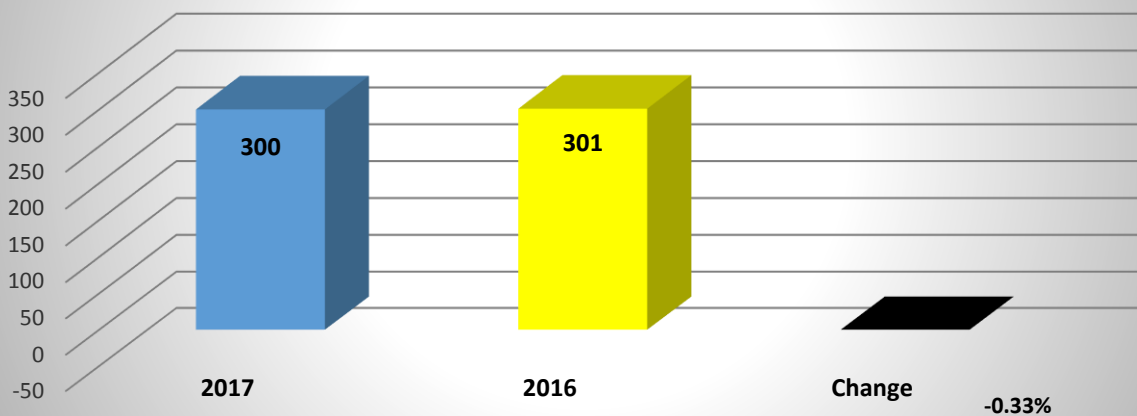


*small numbers create large percentages

■ 2017 ■ 2016 ■ Change

n/c = not calculable

Total Crimes 2017-2016 YTD Change

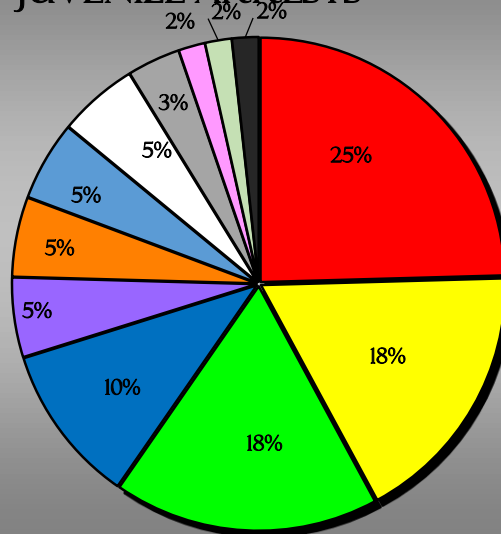


COOLIDGE POLICE DEPARTMENT

2017 JUVENILE ARRESTS REPORT

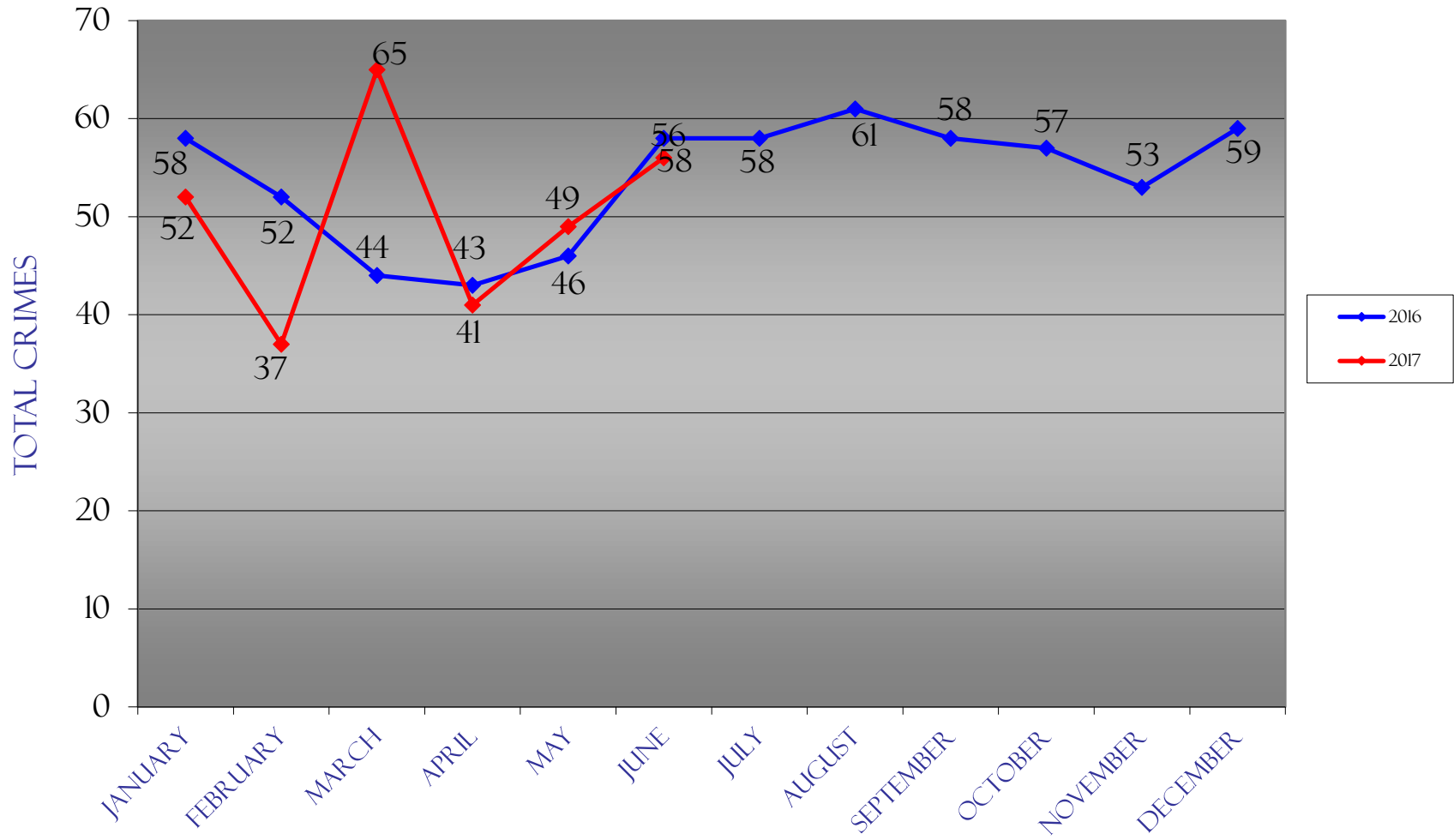
Part I Crimes	January	February	March	April	May	June	July	August	September	October	November	December	Totals
Homicide	0	0	0	0	0	0							0
Forcible Rape	0	0	0	0	0	0							0
Robbery	0	0	0	0	0	0							0
Agg. Assault	1	1	0	0	1	0							3
Burglary	0	0	0	0	0	0							0
Theft	1	0	0	0	0	0							1
Motor Vehicle Theft	0	2	0	0	1	0							3
Arson	0	0	3	0	0	0							3
Totals	2	3	3	0	2	0							10
Part II Crimes													
Other Assault	2	3	2	2	4	1							14
Weapons Offense	0	0	0	0	0	0							0
Vandalism	0	6	1	2	1	0							10
Disorderly Conduct	1	0	0	0	2	0							3
Sex Offenses (ex. Rape or Prost.)	0	0	0	0	0	0							0
Forgery/Counterfeiting	1	0	0	0	0	0							1
Drug Offenses	2	5	2	1	0	0							10
DUI arrests	0	0	0	0	0	0							0
Liquor Law Violations	0	0	0	0	2	0							2
Curfew and Loitering	0	0	0	0	0	1							1
Runaways	0	2	0	1	2	1							6

YTD 2017
JUVENILE ARRESTS



- OTHER ASSAULT
- DRUG OFFENSES
- VANDALISM
- RUNAWAYS
- ARSON
- AGG. ASSAULT
- MOTOR VEHICLE THEFT
- DISORDERLY CONDUCT
- LIQUOR LAW VIOLATIONS
- THEFT
- FORGERY/COUNTERFEITING
- CURFEW AND LOITERING

UCR CRIMES



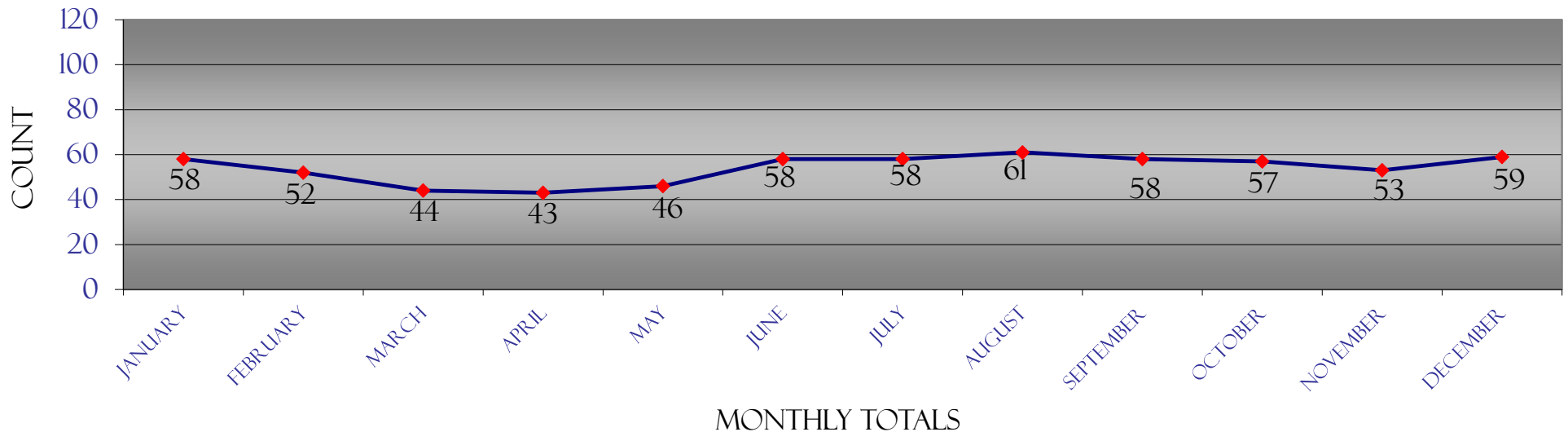
2016 COMPARED TO 2017

COOLIDGE POLICE DEPARTMENT

2016 UNIFORM CRIME REPORT & TRAFFIC DATA

2016	January	February	March	April	May	June	July	August	September	October	November	December	Totals	Rate/1,000
Homicide	2	0	0	0	0	0	0	0	0	0	0	0	2	0.16
Forcible Rape	0	0	0	1	0	0	1	0	0	0	0	1	3	0.25
Robbery	0	0	1	0	1	0	0	1	0	2	1	2	8	0.66
Agg. Assault	1	4	1	3	2	2	2	2	5	1	2	1	26	2.13
Violent Crime	3	4	2	4	3	2	3	3	5	3	3	4	39	3.20
Burglary	13	14	9	8	10	10	13	18	10	14	12	14	145	11.90
Theft	41	29	31	24	27	38	35	31	39	38	35	37	405	33.23
Motor Vehicle Theft	1	4	1	7	4	5	6	7	4	2	3	4	48	3.94
Arson	0	1	1	0	2	3	1	2	0	0	0	0	10	0.82
Property Crime	55	48	42	39	43	56	55	58	53	54	50	55	608	49.89
Total Part I Crime	58	52	44	43	46	58	58	61	58	57	53	59	647	53.09
Crime Rate Per 1,000	4.76	4.27	3.61	3.53	3.77	4.76	4.76	5.01	4.76	4.68	4.35	4.84	53.09	
Assault	11	14	7	17	14	10	20	15	14	16	17	12	167	13.89
Drug Offenses	6	7	5	2	6	7	0	1	3	2	3	5	47	3.91
Accidents w/injuries	5	4	6	8	1	6	2	5	8	3	2	3	53	4.41
Accidents w/o injuries	9	16	13	19	14	7	17	18	15	18	14	15	175	14.55
Fatal accidents	0	0	1	2	0	0	1	0	0	0	0	0	4	0.33
Traffic - Civil/Criminal	102	145	112	121	136	146	120	88	111	70	72	88	1,311	109.00
DUI arrests	6	1	3	5	7	4	4	0	6	3	3	6	48	3.99

2016 UNIFORM CRIME REPORT



The eight crimes listed at the top of the report are Part I crimes reported for statistical purposes to the Department of Public Safety and the FBI.
 The rate is calculated using population estimates of 12,187 provided by Office of Employment & Population Statistics, Arizona Department of Administration

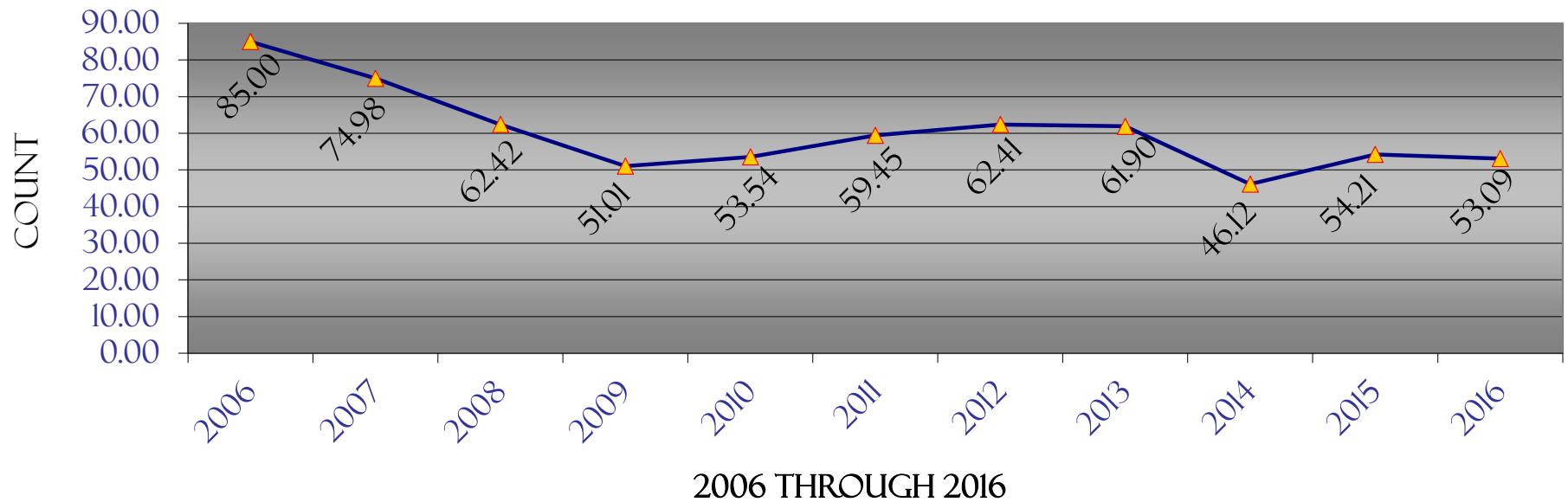
COOLIDGE POLICE DEPARTMENT

UNIFORM CRIME REPORT

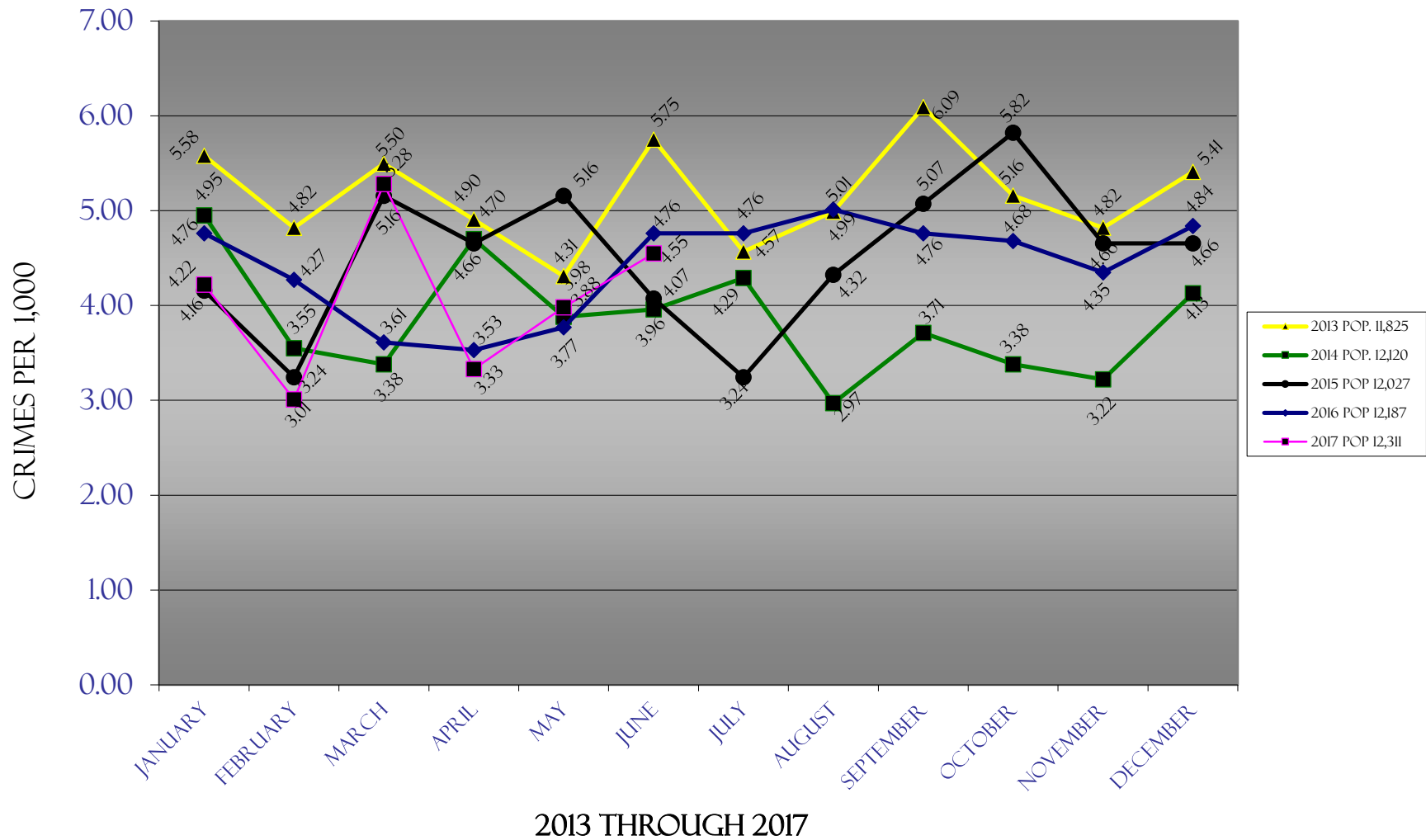
HISTORICAL DATA

	January	February	March	April	May	June	July	August	September	October	November	December	Total	Rate/1,000
2006	76	63	92	78	70	79	52	85	76	56	71	86	884	85.00
2007	86	96	60	77	62	77	66	59	69	68	78	71	869	74.98
2008	79	42	43	54	47	44	48	84	86	94	58	78	757	62.42
2009	75	66	62	58	30	52	49	35	53	57	47	44	628	51.01
2010	48	45	49	36	35	44	56	64	60	66	65	83	651	53.54
2011	86	46	44	55	69	54	68	60	59	56	52	54	703	59.45
2012	41	37	59	61	117	70	78	51	59	42	64	59	738	62.41
2013	66	57	65	58	51	68	54	59	72	61	57	64	732	61.90
2014	60	43	41	57	47	48	52	36	45	41	39	50	559	46.12
2015	50	39	62	56	62	49	39	52	61	70	56	56	652	54.21
2016	58	52	44	43	46	58	58	61	58	57	53	59	647	53.09
2017	52	37	65	41	49	56							300	24.37
% Change from last year	-10.34	-28.85	47.73	-4.65	6.52	-3.45								

CRIMES PER 1,000 HISTORICALLY



TO-DATE CRIME RATE COMPARISON

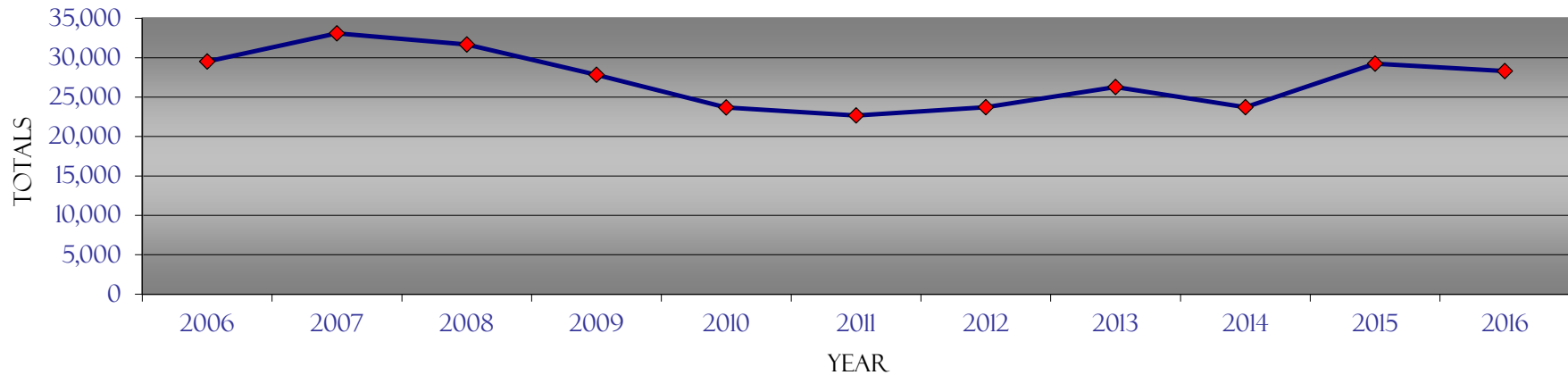


COOLIDGE POLICE DEPARTMENT

CALLS FOR SERVICE HISTORICAL DATA

<i>CFs</i>	<i>Jan</i>	<i>Feb</i>	<i>Mar</i>	<i>Apr</i>	<i>May</i>	<i>Jun</i>	<i>Jul</i>	<i>Aug</i>	<i>Sep</i>	<i>Oct</i>	<i>Nov</i>	<i>Dec</i>	<i>Totals</i>
2006	2,044	2,245	2,414	2,373	2,484	2,249	2,604	2,839	2,695	2,710	2,276	2,591	29,524
2007	2,945	2,795	2,788	2,620	2,630	2,874	2,648	2,928	2,751	2,946	2,550	2,621	33,096
2008	2,762	2,728	2,776	2,941	3,213	2,373	2,551	2,663	2,624	2,442	2,333	2,264	31,670
2009	2,460	2,043	2,460	2,352	2,242	2,112	2,600	2,441	2,214	2,499	2,099	2,324	27,846
2010	2,203	1,765	2,087	2,055	1,919	1,948	2,045	1,993	2,025	1,988	1,764	1,897	23,689
2011	1,992	1,888	1,819	1,957	2,104	1,750	1,929	1,930	1,869	1,828	1,816	1,787	22,669
2012	1,715	1,781	2,097	1,929	2,233	1,978	1,943	2,041	2,102	1,897	1,925	2,087	23,728
2013	1,968	1,726	2,169	2,109	2,264	1,936	2,241	2,676	2,413	2,423	2,115	2,255	26,295
2014	2,011	1,816	2,122	2,074	2,184	1,788	1,905	1,868	2,032	2,033	1,821	2,068	23,722
2015	2,115	2,399	2,584	2,501	2,586	2,276	2,373	2,592	2,664	2,437	2,321	2,391	29,239
2016	2,351	2,271	2,509	2,489	2,503	2,294	2,373	2,380	2,265	2,338	2,268	2,264	28,305
2017	2,319	1,986	2,307	2,174	2,283	1,960							13,029
% Change from last year	-1.36	-12.55	-8.05	-12.66	-8.79	-14.56							

CALLS FOR SERVICE TOTALS BY YEAR



CITATIONS HISTORICAL DATA

	Criminal Traffic	Civil Traffic	Criminal	Warning	Totals
July-16	41	79	43	38	201
August-16	21	67	37	33	158
September-16	33	78	42	35	188
October-16	12	59	44	24	139
November-16	17	55	23	41	136
December-16	32	56	34	33	155
January-17	48	104	33	68	253
February-17	39	68	25	38	170
March-17	33	97	31	38	199
April-17	53	82	24	87	246
May-17	32	115	56	87	290
June-17	21	78	62	42	203
% Change from last month	-34.38	-32.17	10.71	-51.72	-30.00
Total	382	938	454	564	2338

*note: small numbers create large percentages

n/c = not calculable

ARRESTS HISTORICAL DATA

	Felony		Misdemeanor		Warrant		Status Offense		Totals	
	Juv .	Adult	Juv.	Adult	Juv.	Adult	Juv.	Adult	Juv.	Adult
July-16	3	14	6	33	1	34	3	1	13	82
August-16	3	13	11	26	0	23	3	4	17	66
September-16	2	5	6	45	0	21	3	0	11	71
October-16	2	7	8	45	0	23	2	0	12	75
November-16	2	10	7	35	0	27	0	1	9	73
December-16	5	7	20	35	0	20	2	1	27	63
January-17	2	7	12	45	0	23	2	0	16	75
February-17	7	9	11	38	0	15	1	0	19	62
March-17	1	11	12	45	0	49	0	0	13	105
April-17	0	9	6	37	0	31	1	0	7	77
May-17	2	17	13	41	0	36	2	0	17	94
June-17	0	9	2	46	0	22	1	0	3	77
% Change from last month	-100.00	-47.06	-84.62	12.20	n/c	-38.89	-50.00	n/c	-82.35	-18.09
Total	29	118	114	471	1	324	20	7	164	920

*note: small numbers create large percentages

n/c = not calculable