

COOLIDGE POLICE DEPARTMENT



Monthly Activity Report

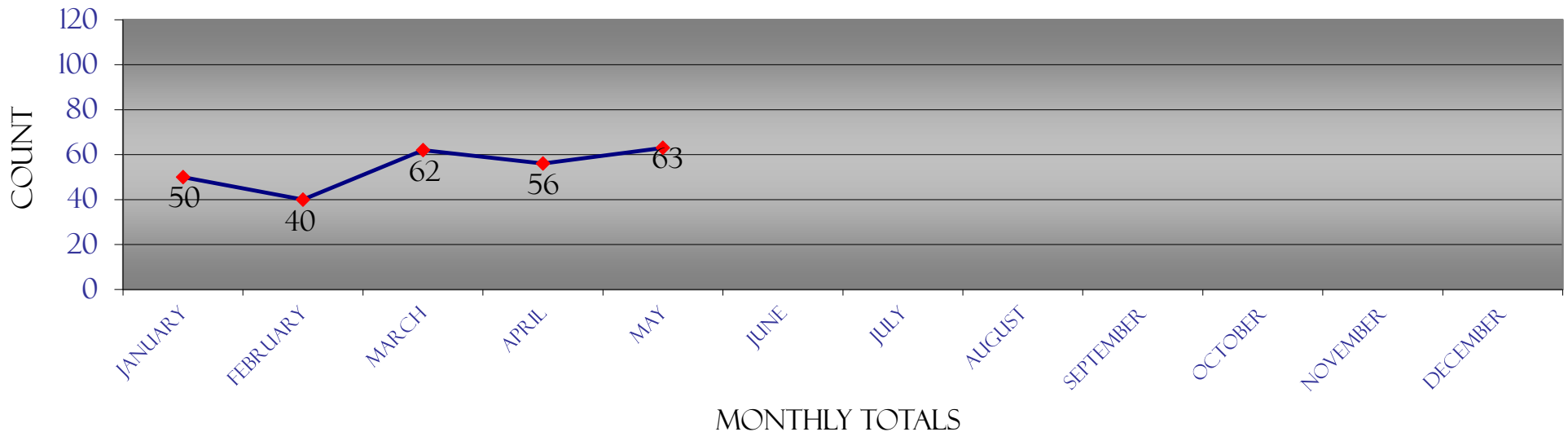
May
2015

COOLIDGE POLICE DEPARTMENT

2015 UNIFORM CRIME REPORT & TRAFFIC DATA

2015	January	February	March	April	May	June	July	August	September	October	November	December	Totals	Rate/1,000
Homicide	0	0	0	0	0								0	0.00
Forcible Rape	0	0	0	1	0								1	0.08
Robbery	4	0	1	0	1								6	0.50
Agg. Assault	0	2	1	4	13								20	1.66
Violent Crime	4	2	2	5	14								27	2.24
Burglary	4	8	9	8	7								36	2.99
Theft	41	28	51	42	36								198	16.46
Motor Vehicle Theft	1	2	0	1	6								10	0.83
Arson	0	0	0	0	0								0	0.00
Property Crime	46	38	60	51	49								244	20.29
Total Part I Crime	50	40	62	56	63								271	22.53
Crime Rate Per 1,000	4.16	3.33	5.16	4.66	5.24								22.53	
Assault	17	19	12	22	11								81	6.73
Drug Offenses	4	11	1	2	2								20	1.66
Accidents w/injuries	3	1	7	10	8								29	2.41
Accidents w/o injuries	13	16	10	16	17								72	5.99
Fatal accidents	1	1	0	0	0								2	0.17
Traffic - Civil/Criminal	151	77	104	133	168								633	52.63
DUI arrests	3	3	3	3	9								21	1.75

2015 UNIFORM CRIME REPORT



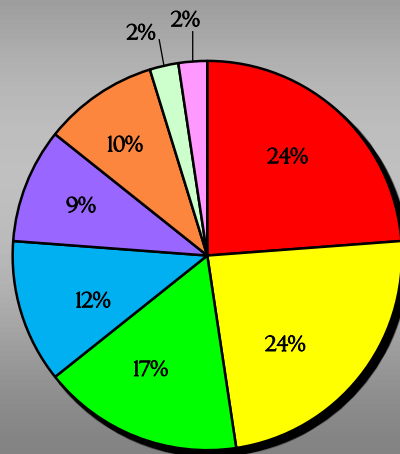
The eight crimes listed at the top of the report are Part I crimes reported for statistical purposes to the Department of Public Safety and the FBI.
 The rate is calculated using population estimates of 12,027 provided by Office of Employment & Population Statistics, Arizona Department of Administration

COOLIDGE POLICE DEPARTMENT

2015 JUVENILE ACTIVITY & ARRESTS REPORT

Part I Crimes	January	February	March	April	May	June	July	August	September	October	November	December	Totals
Homicide	0	0	0	0	0								0
Forcible Rape	0	0	0	0	0								0
Robbery	0	0	0	0	0								0
Agg. Assault	0	0	0	0	0								0
Burglary	0	0	0	0	0								0
Theft	2	1	3	4	0								10
Motor Vehicle Theft	0	0	0	0	0								0
Arson	0	0	0	0	0								0
Totals	2	1	3	4	0	0	0	0	0	0	0	0	10
Part II Crimes													
Other Assault	0	0	1	1	2								4
Weapons Offense	0	0	0	0	0								0
Vandalism	0	0	0	1	0								1
Disorderly Conduct	3	0	0	1	0								4
Sex Offenses (ex. Rape or Prost.)	0	0	0	0	0								0
Drug Offenses	0	7	0	0	0								7
DUI arrests	0	0	0	0	1								1
Liquor Law Violations	0	0	1	3	1								5
Curfew and Loitering	0	0	0	0	0								0
Runaways	1	1	1	5	2								10

YTD 2015
JUVENILE ACTIVITY



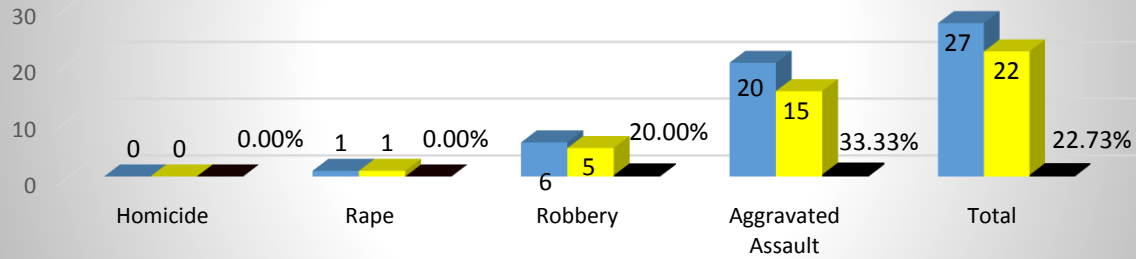
- RUNAWAYS
- THEFT
- DRUG OFFENSES
- LIQUOR LAW VIOLATIONS
- DISORDERLY CONDUCT
- OTHER ASSAULT
- VANDALISM
- DUI ARRESTS

COOLIDGE POLICE DEPARTMENT

YEAR TO DATE CRIME COMPARISON

MAY 2015

Violent Crimes 2015 -2014 YTD Change

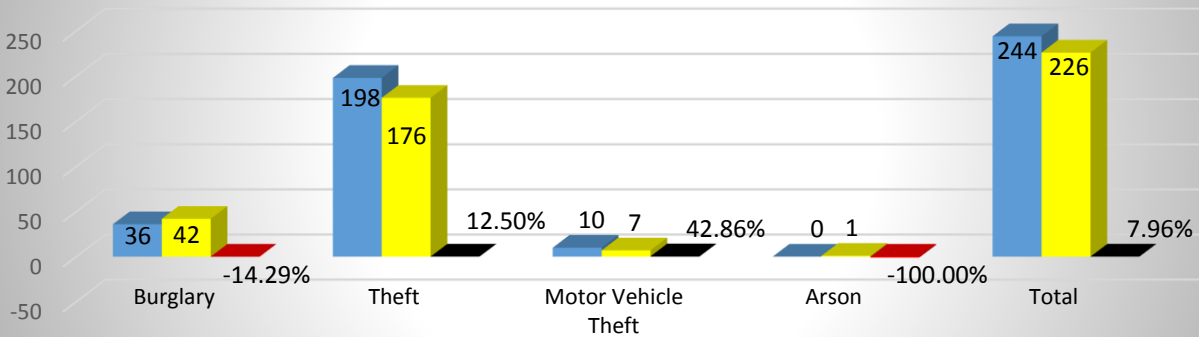


*small numbers create large percentages

■ 2015 ■ 2014 ■ Change

n/c = not calculable

Property Crimes 2015-2014 YTD Change

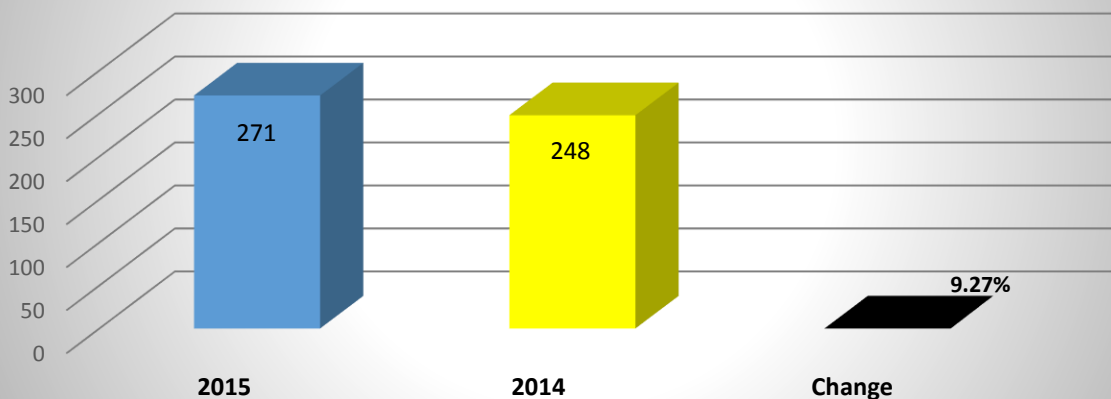


*small numbers create large percentages

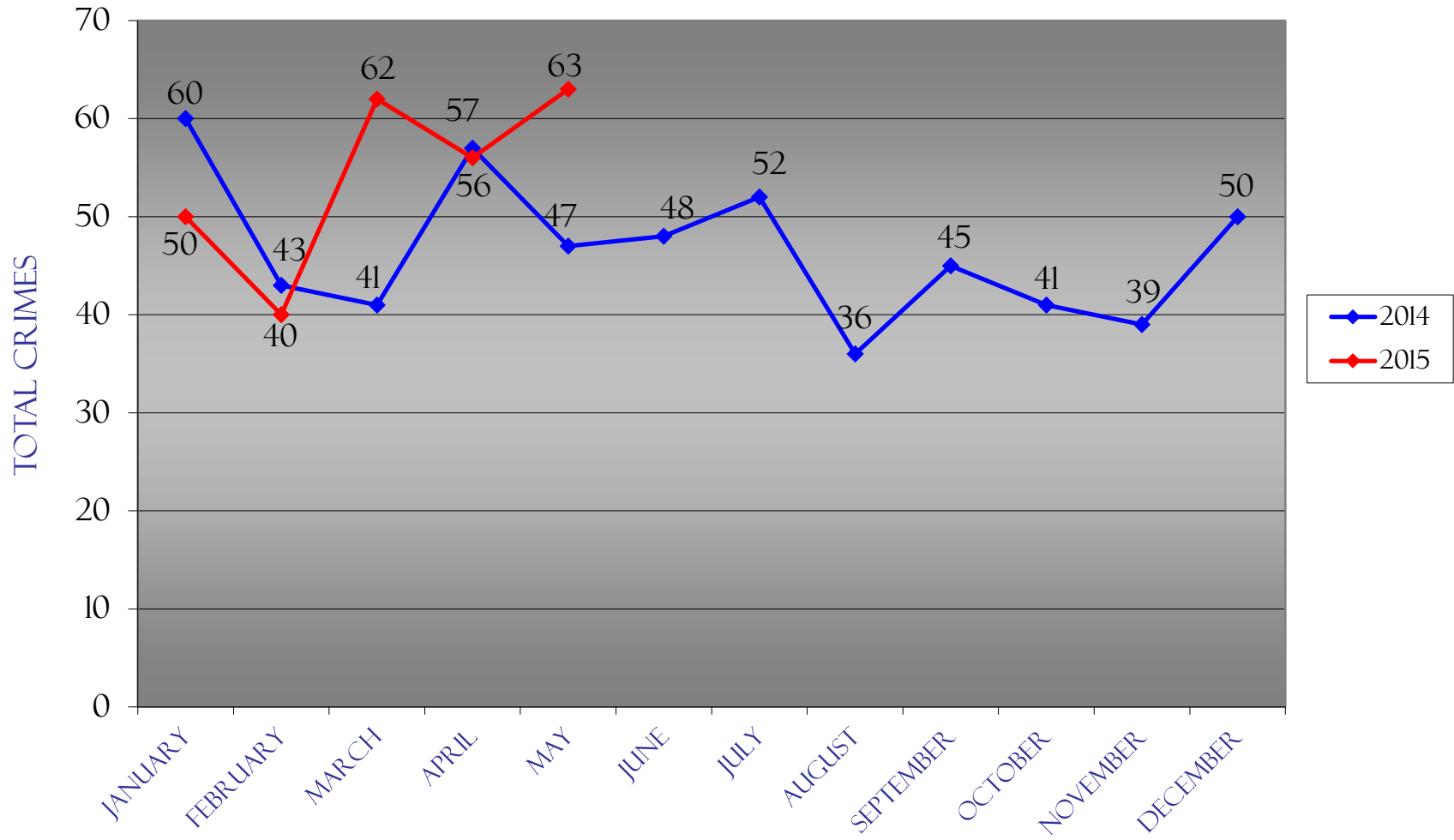
■ 2015 ■ 2014 ■ Change

n/c = not calculable

Total Crimes 2015-2014 YTD Change



UCR CRIMES



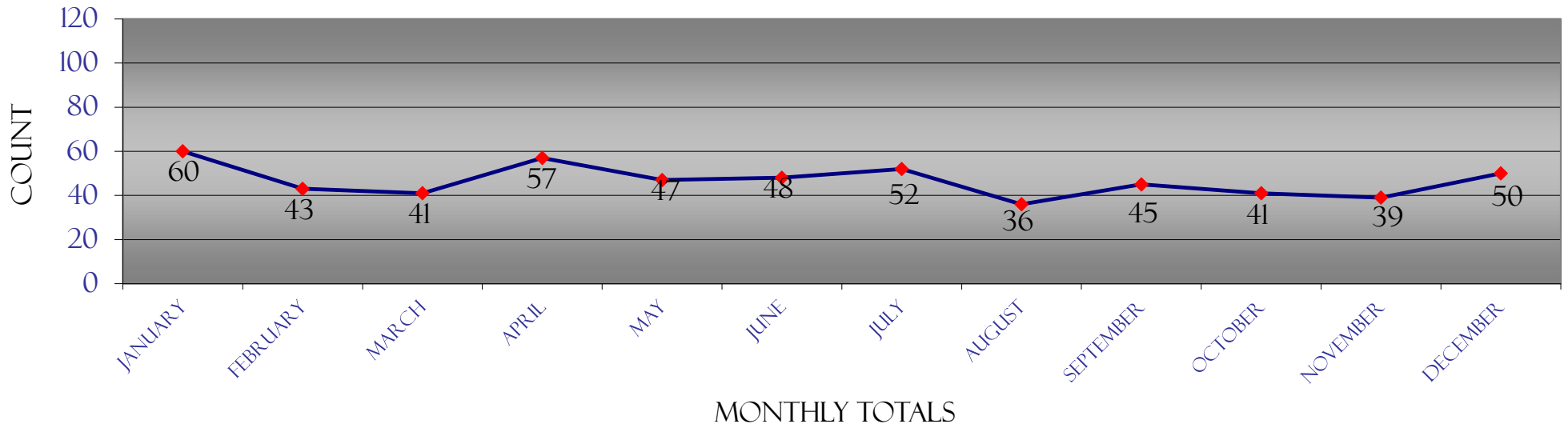
2014 COMPARED TO 2015

COOLIDGE POLICE DEPARTMENT

2014 UNIFORM CRIME REPORT & TRAFFIC DATA

2014	January	February	March	April	May	June	July	August	September	October	November	December	Totals	Rate/1,000
Homicide	0	0	0	0	0	0	0	0	0	0	0	0	0	0.00
Forcible Rape	0	0	0	1	0	1	0	0	3	0	0	0	5	0.41
Robbery	0	0	1	2	3	2	1	1	1	0	1	0	12	0.99
Agg. Assault	3	3	2	3	4	1	0	1	4	4	0	4	29	2.39
Violent Crime	3	3	3	6	7	4	1	2	8	4	1	4	46	4
Burglary	14	8	7	10	3	6	5	4	8	5	4	7	81	6.68
Theft	43	32	29	39	33	37	42	24	26	30	32	35	402	33.17
Motor Vehicle Theft	0	0	2	1	4	1	4	1	3	2	2	4	24	1.98
Arson	0	0	0	1	0	0	0	5	0	0	0	0	6	0.50
Property Crime	57	40	38	51	40	44	51	34	37	37	38	46	513	42.33
Total Part I Crime	60	43	41	57	47	48	52	36	45	41	39	50	559	46.12
Crime Rate Per 1,000	4.95	3.55	3.38	4.70	3.88	3.96	4.29	2.97	3.71	3.38	3.22	4.13	46.12	
Assault	15	9	17	17	14	9	19	19	29	23	12	13	196	16.17
Drug Offenses	10	4	4	2	2	1	6	3	3	3	7	2	47	3.88
Accidents w/injuries	3	6	3	3	3	4	1	3	5	6	3	2	42	3.47
Accidents w/o injuries	9	14	12	11	9	10	10	10	8	11	16	10	130	10.73
Fatal accidents	0	0	0	0	0	0	0	0	0	1	0	0	1	0.08
Traffic - Civil/Criminal	33	90	92	96	224	66	88	73	130	120	108	90	1,210	99.83
DUI arrests	3	2	10	7	4	2	2	3	10	12	16	8	79	6.52

2014 UNIFORM CRIME REPORT



The eight crimes listed at the top of the report are Part I crimes reported for statistical purposes to the Department of Public Safety and the FBI.

The rate is calculated using population estimates of 12,120 provided by Office of Employment & Population Statistics, Arizona Department of Administration

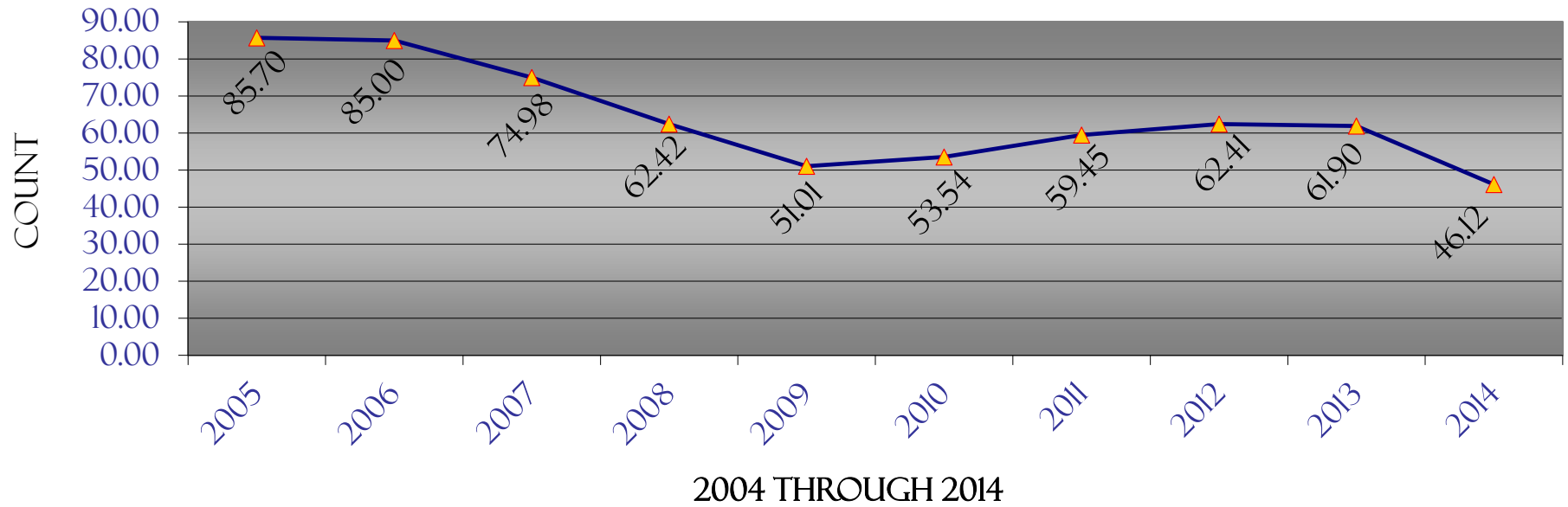
COOLIDGE POLICE DEPARTMENT

UNIFORM CRIME REPORT

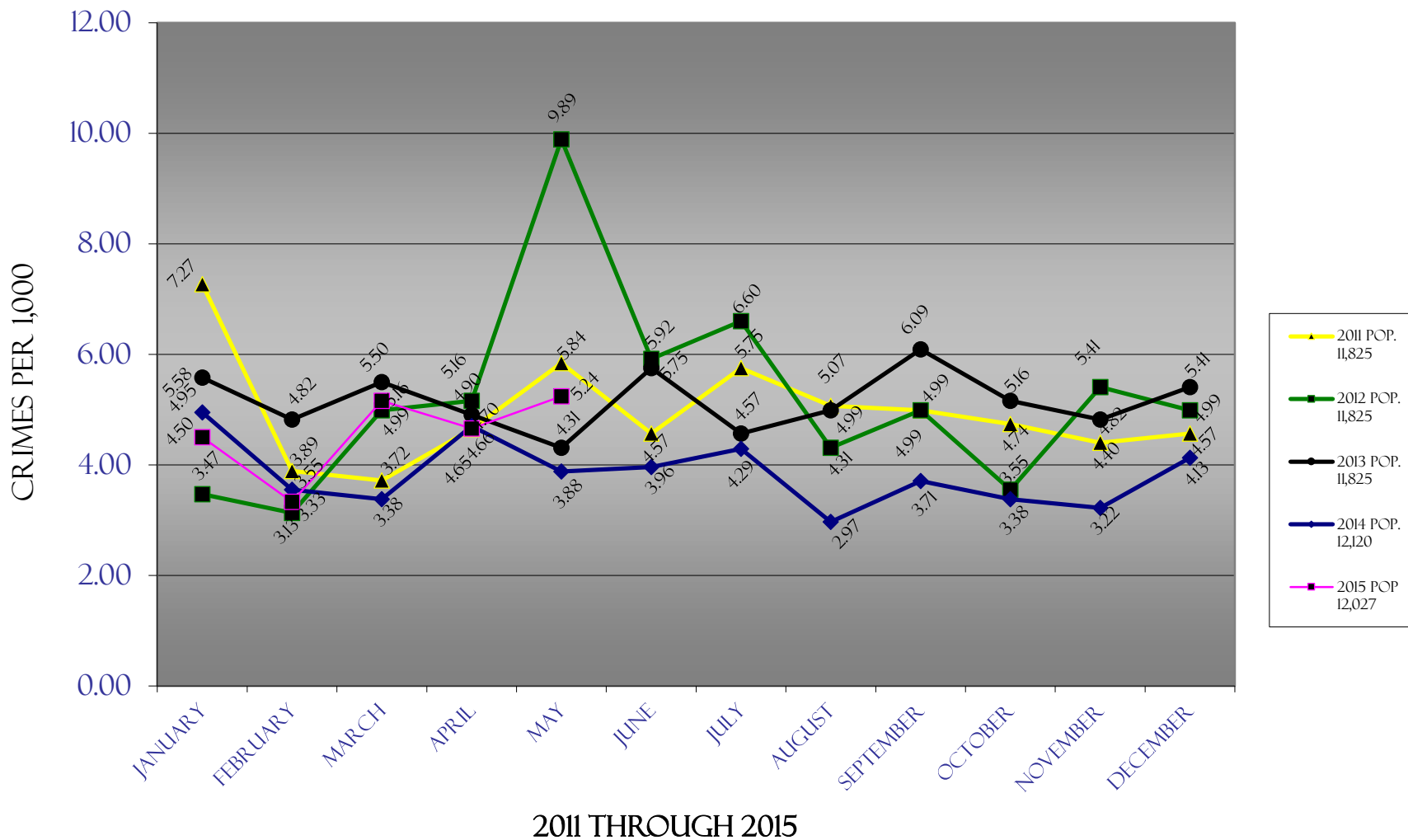
HISTORICAL DATA

	January	February	March	April	May	June	July	August	September	October	November	December	Total	Rate/1,000
2005	47	56	81	65	52	36	71	56	57	61	48	68	698	85.70
2006	76	63	92	78	70	79	52	85	76	56	71	86	884	85.00
2007	86	96	60	77	62	77	66	59	69	68	78	71	869	74.98
2008	79	42	43	54	47	44	48	84	86	94	58	78	757	62.42
2009	75	66	62	58	30	52	49	35	53	57	47	44	628	51.01
2010	48	45	49	36	35	44	56	64	60	66	65	83	651	53.54
2011	86	46	44	55	69	54	68	60	59	56	52	54	703	59.45
2012	41	37	59	61	117	70	78	51	59	42	64	59	738	62.41
2013	66	57	65	58	51	68	54	59	72	61	57	64	732	61.90
2014	60	43	41	57	47	48	52	36	45	41	39	50	559	46.12
2015	50	40	62	56	63								271	22.36
% Change from last year	-16.67	-6.98	51.22	-1.75	34.04									

CRIMES PER 1,000 HISTORICALLY

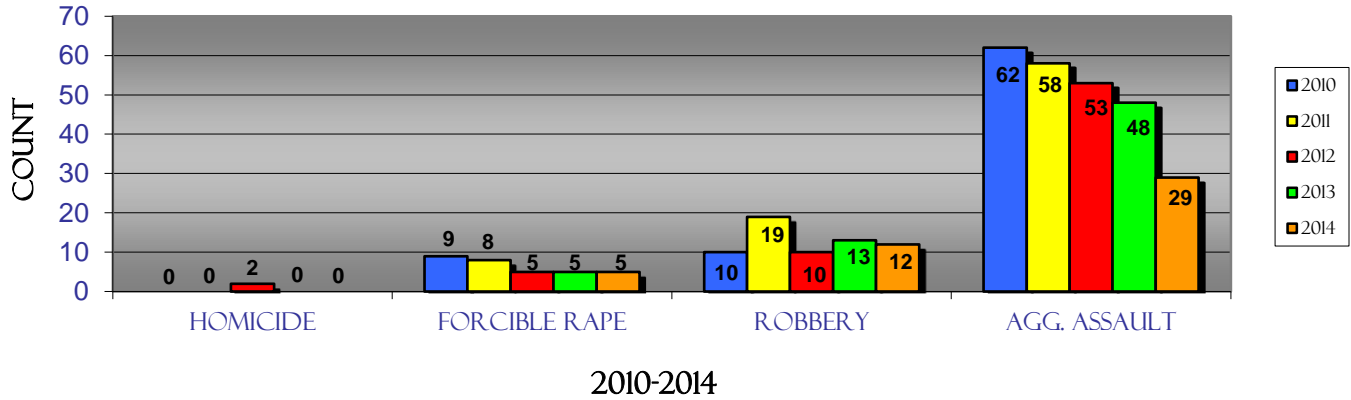


TO-DATE CRIME RATE COMPARISON

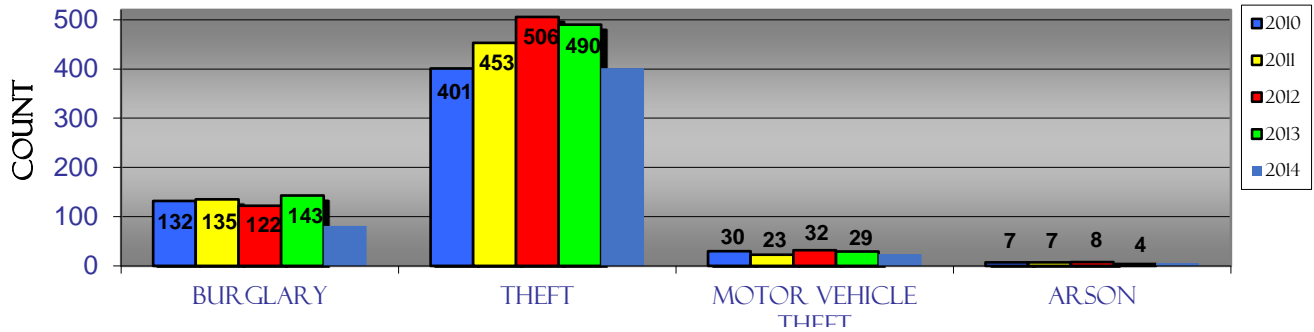


PART I CRIMES FIVE-YEAR COMPARISON

CITY OF COOLIDGE VIOLENT CRIMES



CITY OF COOLIDGE PROPERTY CRIMES

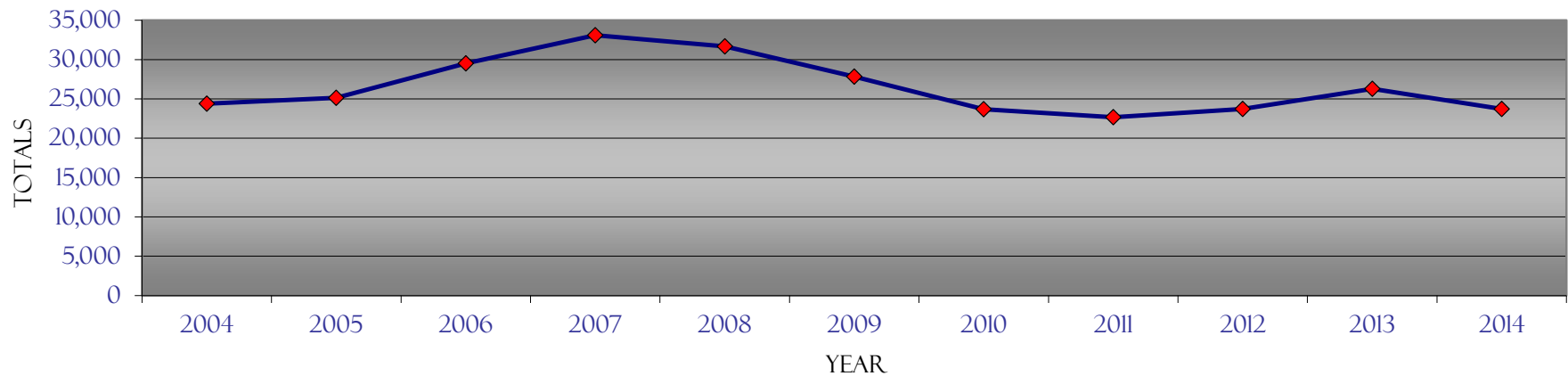


COOLIDGE POLICE DEPARTMENT

CALLS FOR SERVICE HISTORICAL DATA

<i>CFs</i>	<i>Jan</i>	<i>Feb</i>	<i>Mar</i>	<i>Apr</i>	<i>May</i>	<i>Jun</i>	<i>Jul</i>	<i>Aug</i>	<i>Sep</i>	<i>Oct</i>	<i>Nov</i>	<i>Dec</i>	<i>Totals</i>
2004	2,172	1,911	2,056	2,132	2,011	1,930	2,029	2,129	1,967	2,193	1,876	1,994	24,400
2005	2,146	2,047	2,348	1,991	2,198	2,071	2,105	1,986	2,154	2,091	1,982	2,033	25,152
2006	2,044	2,245	2,414	2,373	2,484	2,249	2,604	2,839	2,695	2,710	2,276	2,591	29,524
2007	2,945	2,795	2,788	2,620	2,630	2,874	2,648	2,928	2,751	2,946	2,550	2,621	33,096
2008	2,762	2,728	2,776	2,941	3,213	2,373	2,551	2,663	2,624	2,442	2,333	2,264	31,670
2009	2,460	2,043	2,460	2,352	2,242	2,112	2,600	2,441	2,214	2,499	2,099	2,324	27,846
2010	2,203	1,765	2,087	2,055	1,919	1,948	2,045	1,993	2,025	1,988	1,764	1,897	23,689
2011	1,992	1,888	1,819	1,957	2,104	1,750	1,929	1,930	1,869	1,828	1,816	1,787	22,669
2012	1,715	1,781	2,097	1,929	2,233	1,978	1,943	2,041	2,102	1,897	1,925	2,087	23,728
2013	1,968	1,726	2,169	2,109	2,264	1,936	2,241	2,676	2,413	2,423	2,115	2,255	26,295
2014	2,011	1,816	2,122	2,074	2,184	1,788	1,905	1,868	2,032	2,033	1,821	2,068	23,722
2015	2,115	2,399	2,584	2,501	2,586								
% Change from last year	5.17	32.10	21.77	20.59	18.41								

CALLS FOR SERVICE TOTALS BY YEAR



CITATIONS HISTORICAL DATA

	Criminal Traffic	Civil Traffic	Criminal	Warning	Totals
June-14	17	49	29	48	143
July-14	14	74	31	43	162
August-14	13	60	40	30	143
September-14	45	85	40	41	211
October-14	43	77	21	53	194
November-14	44	64	24	34	166
December-14	25	65	16	75	181
January-15	25	126	38	66	255
February-15	22	55	34	40	151
March-15	35	70	42	34	181
April-15	28	105	60	62	255
May-15	40	128	40	91	299
% Change from last month	42.86	21.90	-33.33	46.77	17.25
Total	351	958	415	617	2341

*note: small numbers create large percentages

n/c = not calculable

ARRESTS HISTORICAL DATA

	Felony		Misdemeanor		Warrant		Status Offense		Totals	
	Juv .	Adult	Juv.	Adult	Juv.	Adult	Juv.	Adult	Juv.	Adult
June-14	1	2	5	32	0	36	4	2	10	72
July-14	5	13	3	40	0	34	1	0	9	87
August-14	1	9	8	44	3	21	1	0	13	74
September-14	3	8	11	54	0	25	2	0	16	87
October-14	3	8	10	40	0	36	0	3	13	87
November-14	0	15	10	36	0	31	1	0	11	82
December-14	1	7	8	30	0	33	1	1	10	71
January-15	2	6	6	37	2	24	1	0	11	67
February-15	2	9	8	34	0	23	0	0	10	66
March-15	0	6	6	53	0	35	1	0	7	94
April-15	0	11	13	63	2	38	0	1	15	113
May-15	0	14	7	45	0	21	0	0	7	80
% Change from last month	n/c	27.27	-46.15	-28.57	-100.00	-44.74	n/c	-100.00	-53.33	-29.20
Total	18	108	95	508	7	357	12	7	132	980

*note: small numbers create large percentages

n/c = not calculable