

# COOLIDGE POLICE DEPARTMENT



## Monthly Activity Report

---

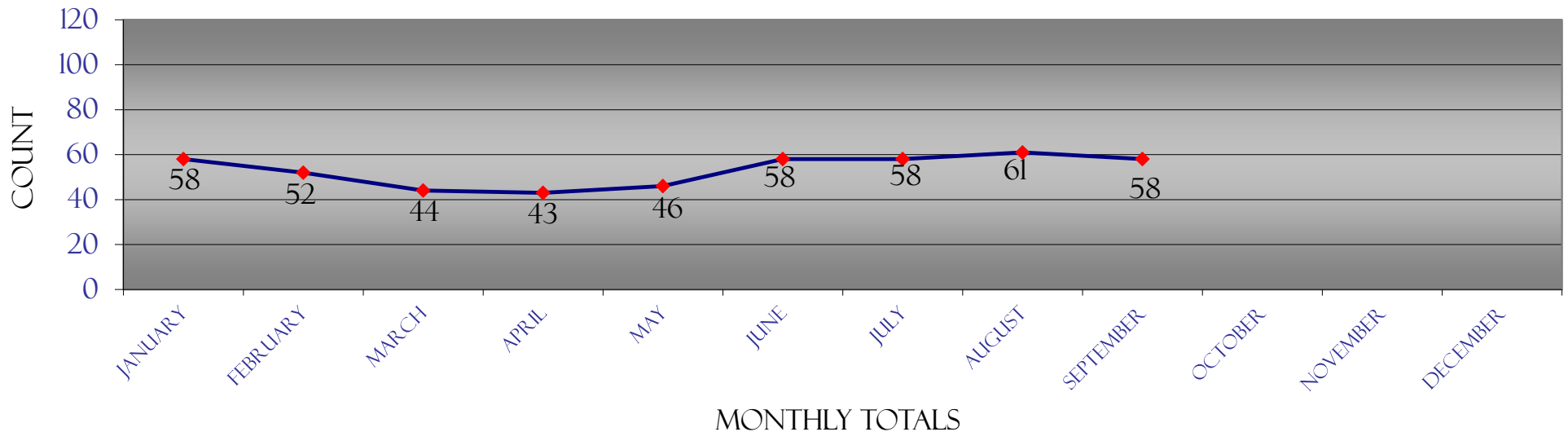
October  
2016

# COOLIDGE POLICE DEPARTMENT

## 2016 UNIFORM CRIME REPORT & TRAFFIC DATA

2016	January	February	March	April	May	June	July	August	September	October	November	December	Totals	Rate/1,000
<b>Homicide</b>	2	0	0	0	0	0	0	0	0				<b>2</b>	<b>0.16</b>
<b>Forcible Rape</b>	0	0	0	1	0	0	1	0	0				<b>2</b>	<b>0.16</b>
<b>Robbery</b>	0	0	1	0	1	0	0	1	0				<b>3</b>	<b>0.25</b>
<b>Agg. Assault</b>	1	4	1	3	2	2	2	2	5				<b>22</b>	<b>1.81</b>
<b>Violent Crime</b>	<b>3</b>	<b>4</b>	<b>2</b>	<b>4</b>	<b>3</b>	<b>2</b>	<b>3</b>	<b>3</b>	<b>5</b>				<b>29</b>	<b>2.38</b>
<b>Burglary</b>	13	14	9	8	10	10	13	18	10				<b>105</b>	<b>8.62</b>
<b>Theft</b>	41	29	31	24	27	38	35	31	39				<b>295</b>	<b>24.21</b>
<b>Motor Vehicle Theft</b>	1	4	1	7	4	5	6	7	4				<b>39</b>	<b>3.20</b>
<b>Arson</b>	0	1	1	0	2	3	1	2	0				<b>10</b>	<b>0.82</b>
<b>Property Crime</b>	<b>55</b>	<b>48</b>	<b>42</b>	<b>39</b>	<b>43</b>	<b>56</b>	<b>55</b>	<b>58</b>	<b>53</b>				<b>449</b>	<b>36.84</b>
<b>Total Part I Crime</b>	<b>58</b>	<b>52</b>	<b>44</b>	<b>43</b>	<b>46</b>	<b>58</b>	<b>58</b>	<b>61</b>	<b>58</b>				<b>478</b>	<b>39.22</b>
<b>Crime Rate Per 1,000</b>	<b>4.76</b>	<b>4.27</b>	<b>3.61</b>	<b>3.53</b>	<b>3.77</b>	<b>4.76</b>	<b>4.76</b>	<b>5.01</b>	<b>4.76</b>				<b>39.22</b>	
<b>Assault</b>	11	14	7	17	14	10	20	15	14				<b>122</b>	<b>10.14</b>
<b>Drug Offenses</b>	6	7	5	2	6	7	0	1	3				<b>37</b>	<b>3.08</b>
<b>Accidents w/injuries</b>	5	4	6	8	1	6	2	5	8				<b>45</b>	<b>3.74</b>
<b>Accidents w/o injuries</b>	9	16	13	19	14	7	17	18	15				<b>128</b>	<b>10.64</b>
<b>Fatal accidents</b>	0	0	1	2	0	0	1	0	0				<b>4</b>	<b>0.33</b>
<b>Traffic - Civil/Criminal</b>	102	145	112	121	136	146	120	88	111				<b>1,081</b>	<b>89.88</b>
<b>DUI arrests</b>	6	1	3	5	7	4	4	0	6				<b>36</b>	<b>2.99</b>

### 2016 UNIFORM CRIME REPORT



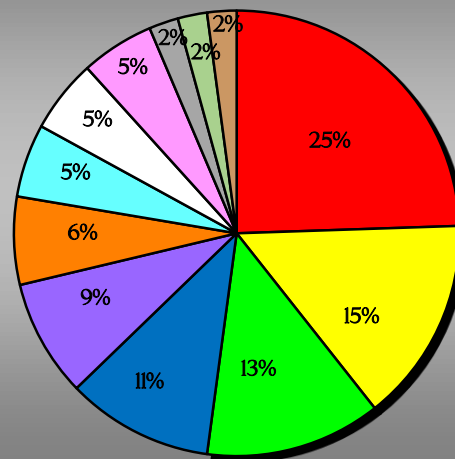
The eight crimes listed at the top of the report are Part I crimes reported for statistical purposes to the Department of Public Safety and the FBI.  
 The rate is calculated using population estimates of 12,187 provided by Office of Employment & Population Statistics, Arizona Department of Administration

# COOLIDGE POLICE DEPARTMENT

## 2016 JUVENILE ARRESTS REPORT

<b>Part I Crimes</b>	<b>January</b>	<b>February</b>	<b>March</b>	<b>April</b>	<b>May</b>	<b>June</b>	<b>July</b>	<b>August</b>	<b>September</b>	<b>October</b>	<b>November</b>	<b>December</b>	<b>Totals</b>
Homicide	0	0	0	0	0	0	0	0	0				0
Forcible Rape	0	0	0	0	0	0	0	0	0				0
Robbery	0	0	0	0	0	0	0	0	0				0
Agg. Assault	1	0	2	1	0	0	0	1	0				5
Burglary	0	0	1	0	3	1	0	0	0				5
Theft	2	0	1	0	0	0	0	3	2				8
Motor Vehicle Theft	0	0	0	1	0	6	2	1	0				10
Arson	0	0	2	0	0	0	0	0	0				2
<b>Totals</b>	<b>3</b>	<b>0</b>	<b>6</b>	<b>2</b>	<b>3</b>	<b>7</b>	<b>2</b>	<b>5</b>	<b>2</b>				<b>30</b>
<b>Part II Crimes</b>													
Other Assault	2	0	1	0	2	0	0	1	0				6
Weapons Offense	0	0	0	0	0	0	0	0	0				0
Vandalism	4	2	1	0	0	2	3	1	1				14
Disorderly Conduct	0	0	0	0	2	0	1	2	0				5
Sex Offenses (ex. Rape or Prost.)	0	0	0	2	0	0	0	0	0				2
Drug Offenses	3	1	2	0	1	3	0	0	2				12
DUI arrests	0	0	0	0	0	0	0	0	0				0
Liquor Law Violations	0	0	0	0	0	0	0	0	0				0
Curfew and Loitering	0	0	0	1	0	0	0	1	0				2
Runaways	2	0	5	1	2	2	4	4	3				23

YTD 2016  
JUVENILE ARRESTS



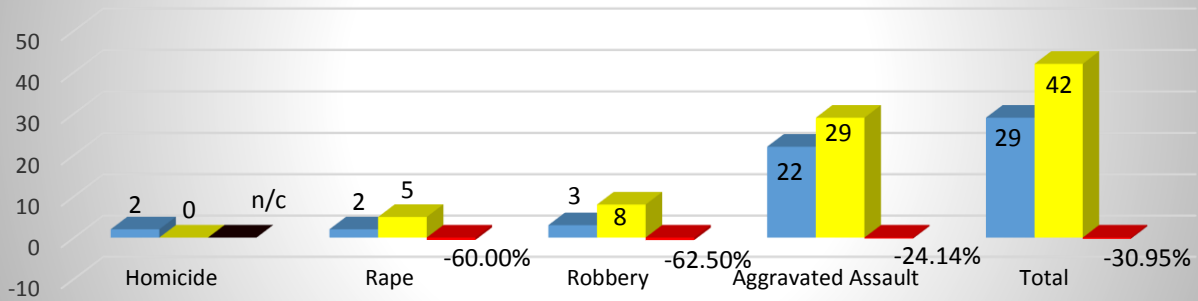
- RUNAWAYS
- VANDALISM
- DRUG OFFENSES
- MOTOR VEHICLE THEFT
- THEFT
- OTHER ASSAULT
- BURGLARY
- AGG. ASSAULT
- DISORDERLY CONDUCT
- ARSON
- SEX OFFENSES (EX. RAPE OR PROST.)
- CURFEW AND LOITERING

# COOLIDGE POLICE DEPARTMENT

## YEAR TO DATE CRIME COMPARISON

### SEPTEMBER 2016

#### Violent Crimes 2016 -2015 YTD Change

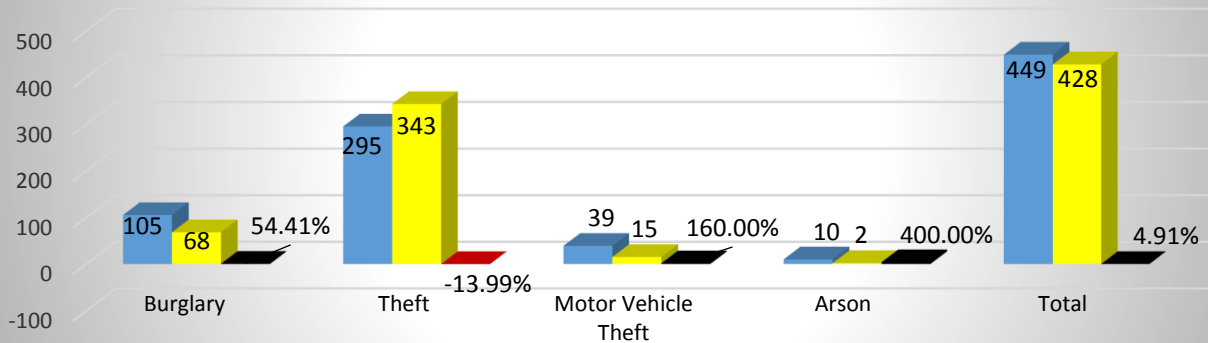


\*small numbers create large percentages

■ 2016 ■ 2015 ■ Change

n/c = not calculable

#### Property Crimes 2016-2015 YTD Change

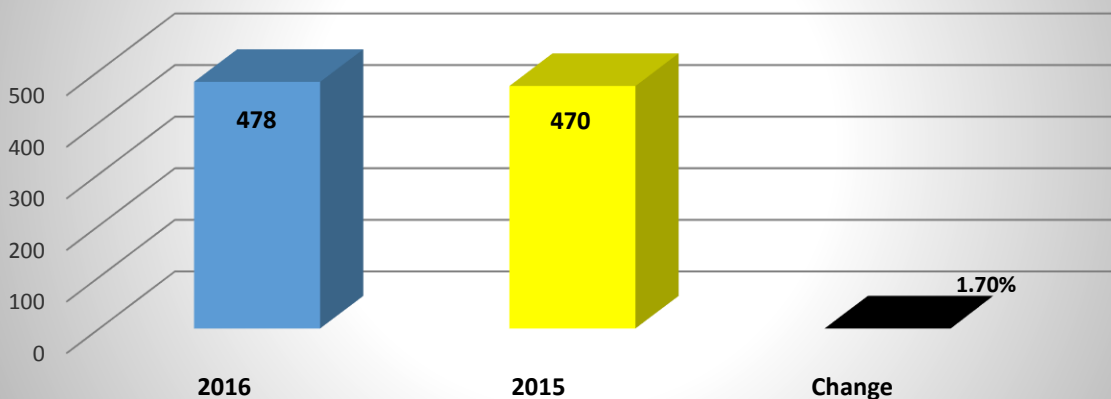


\*small numbers create large percentages

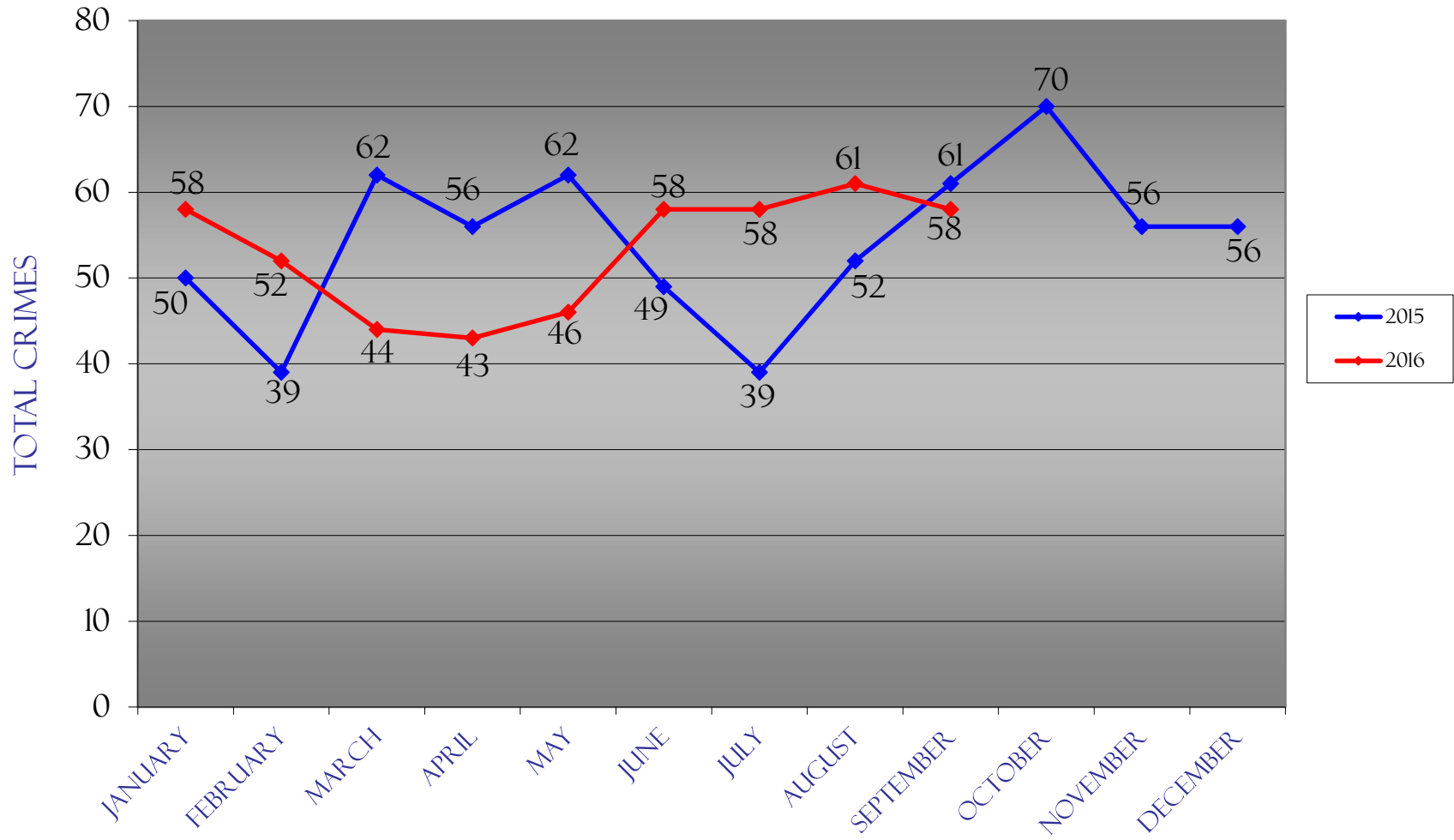
■ 2016 ■ 2015 ■ Change

n/c = not calculable

#### Total Crimes 2016-2015 YTD Change



# UCR CRIMES



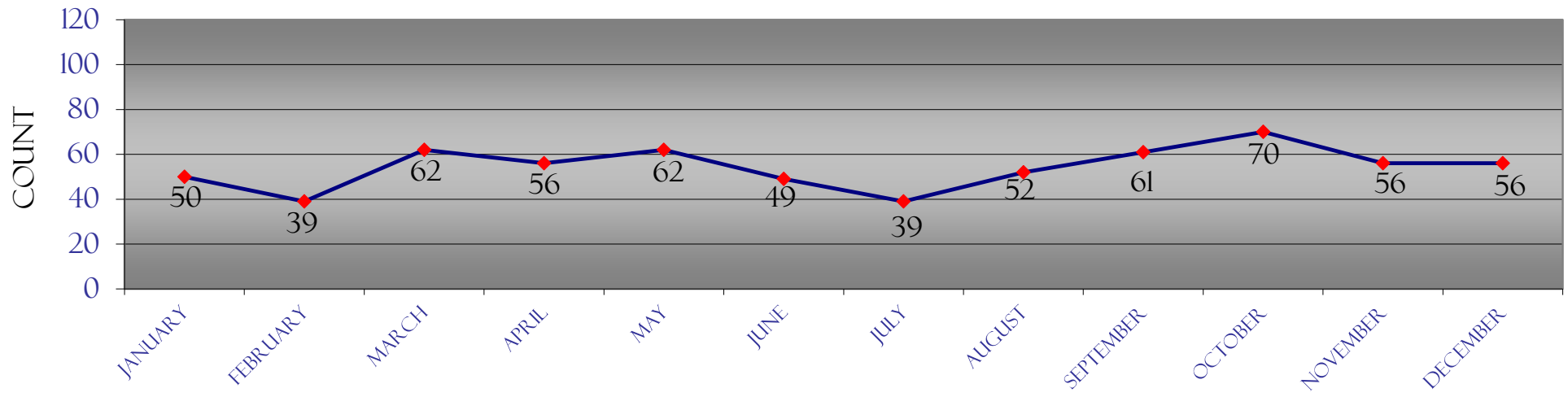
2015 COMPARED TO 2016

# COOLIDGE POLICE DEPARTMENT

## 2015 UNIFORM CRIME REPORT & TRAFFIC DATA

2015	January	February	March	April	May	June	July	August	September	October	November	December	Totals	Rate/1,000
<b>Homicide</b>	0	0	0	0	0	0	0	0	0	0	0	0	<b>0</b>	<b>0.00</b>
<b>Forcible Rape</b>	0	0	0	1	0	0	0	2	2	2	0	0	<b>7</b>	<b>0.58</b>
<b>Robbery</b>	4	0	1	0	2	0	0	0	1	0	2	0	<b>10</b>	<b>0.83</b>
<b>Agg. Assault</b>	0	1	1	4	11	5	1	3	3	5	3	5	<b>42</b>	<b>3.49</b>
<b>Violent Crime</b>	<b>4</b>	<b>1</b>	<b>2</b>	<b>5</b>	<b>13</b>	<b>5</b>	<b>1</b>	<b>5</b>	<b>6</b>	<b>7</b>	<b>5</b>	<b>5</b>	<b>59</b>	<b>4.91</b>
<b>Burglary</b>	4	8	9	8	7	6	12	4	10	13	9	7	<b>97</b>	<b>8.07</b>
<b>Theft</b>	41	28	51	42	36	35	26	39	45	48	49	27	<b>467</b>	<b>38.83</b>
<b>Motor Vehicle Theft</b>	1	2	0	1	6	3	0	2	0	2	2	2	<b>21</b>	<b>1.75</b>
<b>Arson</b>	0	0	0	0	0	0	0	2	0	0	0	0	<b>2</b>	<b>0.17</b>
<b>Property Crime</b>	<b>46</b>	<b>38</b>	<b>60</b>	<b>51</b>	<b>49</b>	<b>44</b>	<b>38</b>	<b>47</b>	<b>55</b>	<b>63</b>	<b>60</b>	<b>36</b>	<b>587</b>	<b>48.81</b>
<b>Total Part I Crime</b>	<b>50</b>	<b>39</b>	<b>62</b>	<b>56</b>	<b>62</b>	<b>49</b>	<b>39</b>	<b>52</b>	<b>61</b>	<b>70</b>	<b>56</b>	<b>56</b>	<b>652</b>	<b>54.21</b>
<b>Crime Rate Per 1,000</b>	<b>4.16</b>	<b>3.24</b>	<b>5.16</b>	<b>4.66</b>	<b>5.16</b>	<b>4.07</b>	<b>3.24</b>	<b>4.32</b>	<b>5.07</b>	<b>5.82</b>	<b>4.66</b>	<b>4.66</b>	<b>54.21</b>	
<b>Assault</b>	18	20	12	22	11	19	27	22	25	16	16	18	<b>226</b>	<b>18.79</b>
<b>Drug Offenses</b>	4	11	1	2	2	1	5	3	2	4	5	3	<b>43</b>	<b>3.58</b>
<b>Accidents w/injuries</b>	3	1	7	10	8	6	3	1	3	7	6	3	<b>58</b>	<b>4.82</b>
<b>Accidents w/o injuries</b>	13	16	10	16	17	10	14	12	15	18	13	7	<b>161</b>	<b>13.39</b>
<b>Fatal accidents</b>	1	1	0	0	0	0	0	1	0	0	0	0	<b>3</b>	<b>0.25</b>
<b>Traffic - Civil/Criminal</b>	151	77	104	133	168	78	163	82	101	90	131	100	<b>1,378</b>	<b>114.58</b>
<b>DUI arrests</b>	3	3	3	3	9	5	7	3	2	3	5	5	<b>51</b>	<b>4.24</b>

### 2015 UNIFORM CRIME REPORT



MONTHLY TOTALS

The eight crimes listed at the top of the report are Part I crimes reported for statistical purposes to the Department of Public Safety and the FBI.  
 The rate is calculated using population estimates of 12,027 provided by Office of Employment & Population Statistics, Arizona Department of Administration

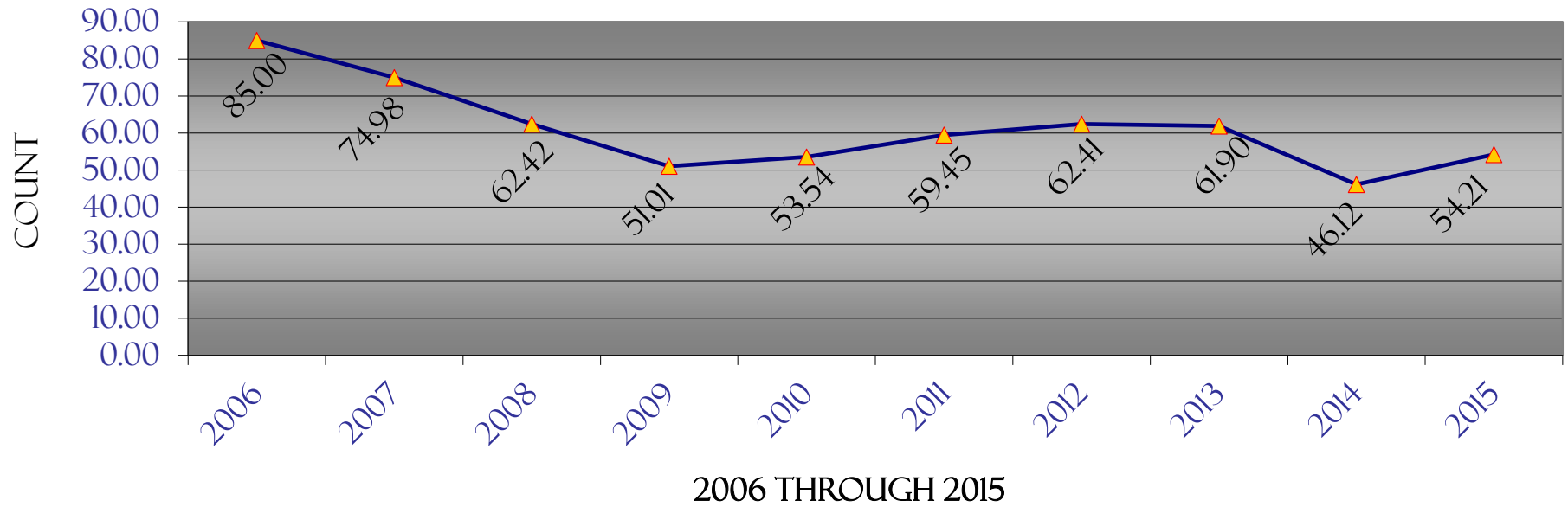
# COOLIDGE POLICE DEPARTMENT

## UNIFORM CRIME REPORT

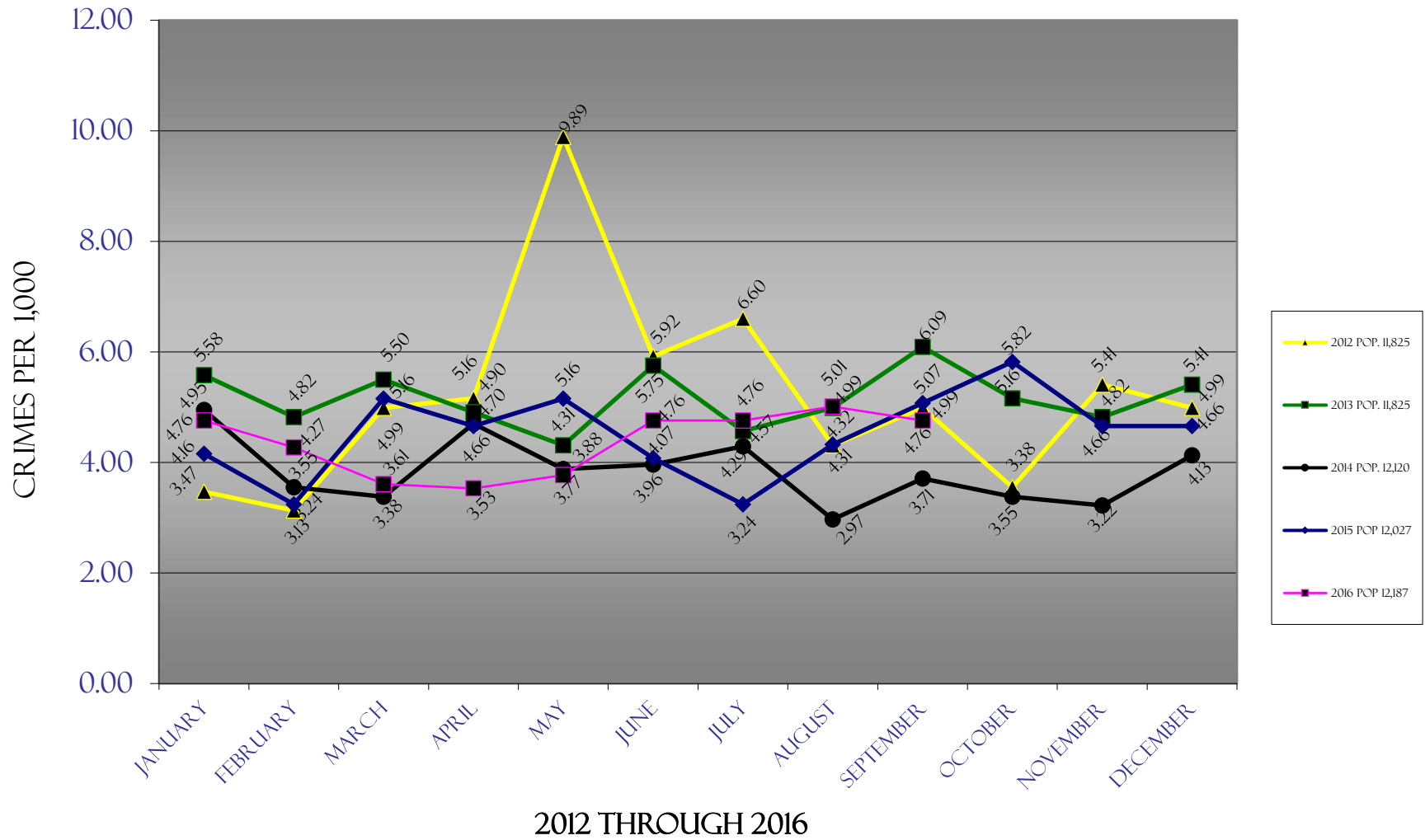
### HISTORICAL DATA

	January	February	March	April	May	June	July	August	September	October	November	December	Total	Rate/1,000
<b>2006</b>	76	63	92	78	70	79	52	85	76	56	71	86	884	85.00
<b>2007</b>	86	96	60	77	62	77	66	59	69	68	78	71	869	74.98
<b>2008</b>	79	42	43	54	47	44	48	84	86	94	58	78	757	62.42
<b>2009</b>	75	66	62	58	30	52	49	35	53	57	47	44	628	51.01
<b>2010</b>	48	45	49	36	35	44	56	64	60	66	65	83	651	53.54
<b>2011</b>	86	46	44	55	69	54	68	60	59	56	52	54	703	59.45
<b>2012</b>	41	37	59	61	117	70	78	51	59	42	64	59	738	62.41
<b>2013</b>	66	57	65	58	51	68	54	59	72	61	57	64	732	61.90
<b>2014</b>	60	43	41	57	47	48	52	36	45	41	39	50	559	46.12
<b>2015</b>	50	39	62	56	62	49	39	52	61	70	56	56	652	54.21
<b>2016</b>	58	52	44	43	46	58	58	61	58					
<b>% Change from last year</b>	<b>16.00</b>	<b>33.33</b>	<b>-29.03</b>	<b>-23.21</b>	<b>-25.81</b>	<b>18.37</b>	<b>48.72</b>	<b>17.31</b>	<b>-4.92</b>					

CRIMES PER 1,000 HISTORICALLY



## TO-DATE CRIME RATE COMPARISON



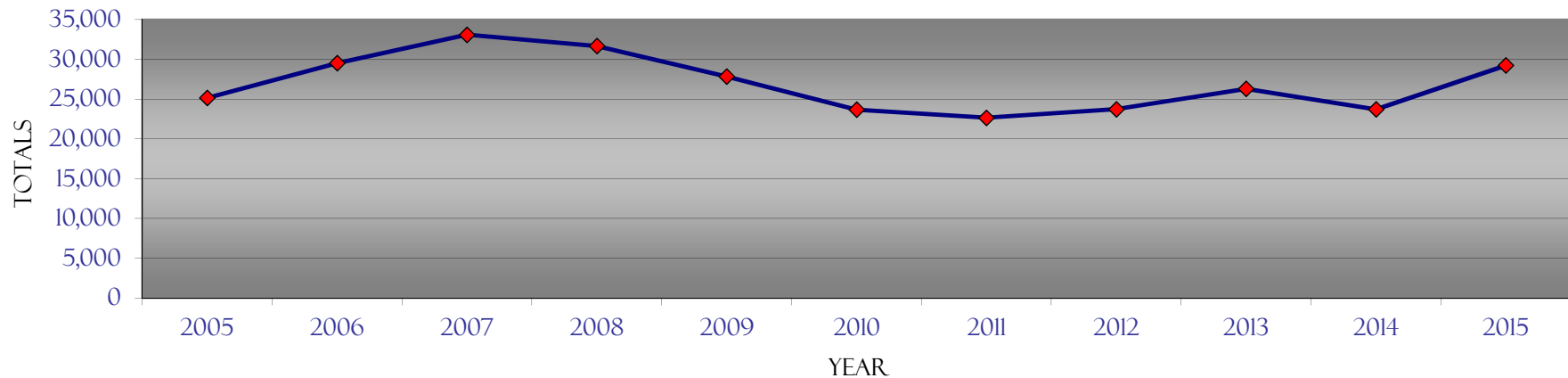


# COOLIDGE POLICE DEPARTMENT

## CALLS FOR SERVICE HISTORICAL DATA

<i>CFs</i>	<i>Jan</i>	<i>Feb</i>	<i>Mar</i>	<i>Apr</i>	<i>May</i>	<i>Jun</i>	<i>Jul</i>	<i>Aug</i>	<i>Sep</i>	<i>Oct</i>	<i>Nov</i>	<i>Dec</i>	<i>Totals</i>
<b>2005</b>	2,146	2,047	2,348	1,991	2,198	2,071	2,105	1,986	2,154	2,091	1,982	2,033	25,152
<b>2006</b>	2,044	2,245	2,414	2,373	2,484	2,249	2,604	2,839	2,695	2,710	2,276	2,591	29,524
<b>2007</b>	2,945	2,795	2,788	2,620	2,630	2,874	2,648	2,928	2,751	2,946	2,550	2,621	33,096
<b>2008</b>	2,762	2,728	2,776	2,941	3,213	2,373	2,551	2,663	2,624	2,442	2,333	2,264	31,670
<b>2009</b>	2,460	2,043	2,460	2,352	2,242	2,112	2,600	2,441	2,214	2,499	2,099	2,324	27,846
<b>2010</b>	2,203	1,765	2,087	2,055	1,919	1,948	2,045	1,993	2,025	1,988	1,764	1,897	23,689
<b>2011</b>	1,992	1,888	1,819	1,957	2,104	1,750	1,929	1,930	1,869	1,828	1,816	1,787	22,669
<b>2012</b>	1,715	1,781	2,097	1,929	2,233	1,978	1,943	2,041	2,102	1,897	1,925	2,087	23,728
<b>2013</b>	1,968	1,726	2,169	2,109	2,264	1,936	2,241	2,676	2,413	2,423	2,115	2,255	26,295
<b>2014</b>	2,011	1,816	2,122	2,074	2,184	1,788	1,905	1,868	2,032	2,033	1,821	2,068	23,722
<b>2015</b>	2,115	2,399	2,584	2,501	2,586	2,276	2,373	2,592	2,664	2,437	2,321	2,391	29,239
<b>2016</b>	2,351	2,271	2,509	2,489	2,503	2,294	2,373	2,380	2,265				
<b>% Change from last year</b>	<b>11.16</b>	<b>-5.34</b>	<b>-2.90</b>	<b>-0.48</b>	<b>-3.21</b>	<b>0.79</b>	<b>0.00</b>	<b>-8.18</b>	<b>-14.98</b>				

CALLS FOR SERVICE TOTALS BY YEAR



# CITATIONS HISTORICAL DATA

	<b>Criminal Traffic</b>	<b>Civil Traffic</b>	<b>Criminal</b>	<b>Warning</b>	<b>Totals</b>
October-15	28	62	29	48	167
November-15	56	75	28	47	206
December-15	28	72	21	43	164
January-16	43	59	47	15	164
February-16	28	117	39	34	218
March-16	29	83	27	30	169
April-16	33	88	20	20	161
May-16	33	103	48	47	231
June-16	46	100	23	48	217
July-16	41	79	43	38	201
August-16	21	67	37	33	158
September-16	33	78	42	35	188
% Change from last month	57.14	16.42	13.51	6.06	18.99
<b>Total</b>	<b>419</b>	<b>983</b>	<b>404</b>	<b>438</b>	<b>2244</b>

\*note: small numbers create large percentages

n/c = not calculable

# ARRESTS HISTORICAL DATA

	<b>Felony</b>		<b>Misdemeanor</b>		<b>Warrant</b>		<b>Status Offense</b>		<b>Totals</b>	
	<b>Juv .</b>	<b>Adult</b>	<b>Juv.</b>	<b>Adult</b>	<b>Juv.</b>	<b>Adult</b>	<b>Juv.</b>	<b>Adult</b>	<b>Juv.</b>	<b>Adult</b>
October-15	6	8	18	34	1	39	0	2	25	83
November-15	4	15	15	48	1	24	0	0	20	87
December-15	1	11	6	37	0	29	0	0	7	77
January-16	4	12	9	50	1	33	2	0	16	95
February-16	3	10	3	48	0	29	0	0	6	87
March-16	7	11	7	40	0	25	3	0	17	76
April-16	5	12	2	29	0	30	0	0	7	71
May-16	4	14	8	51	0	28	1	0	13	93
June-16	7	8	8	38	0	39	1	0	16	85
July-16	3	14	6	33	1	34	3	1	13	82
August-16	3	13	11	26	0	23	3	4	17	66
September-16	2	5	6	45	0	21	3	0	11	71
% Change from last month	-33.33	-61.54	-45.45	73.08	n/c	-8.70	0.00	-100.00	-35.29	7.58
<b>Total</b>	<b>49</b>	<b>133</b>	<b>99</b>	<b>479</b>	<b>4</b>	<b>354</b>	<b>16</b>	<b>7</b>	<b>168</b>	<b>973</b>

\*note: small numbers create large percentages

n/c = not calculable