

# COOLIDGE POLICE DEPARTMENT



## Monthly Activity Report

---

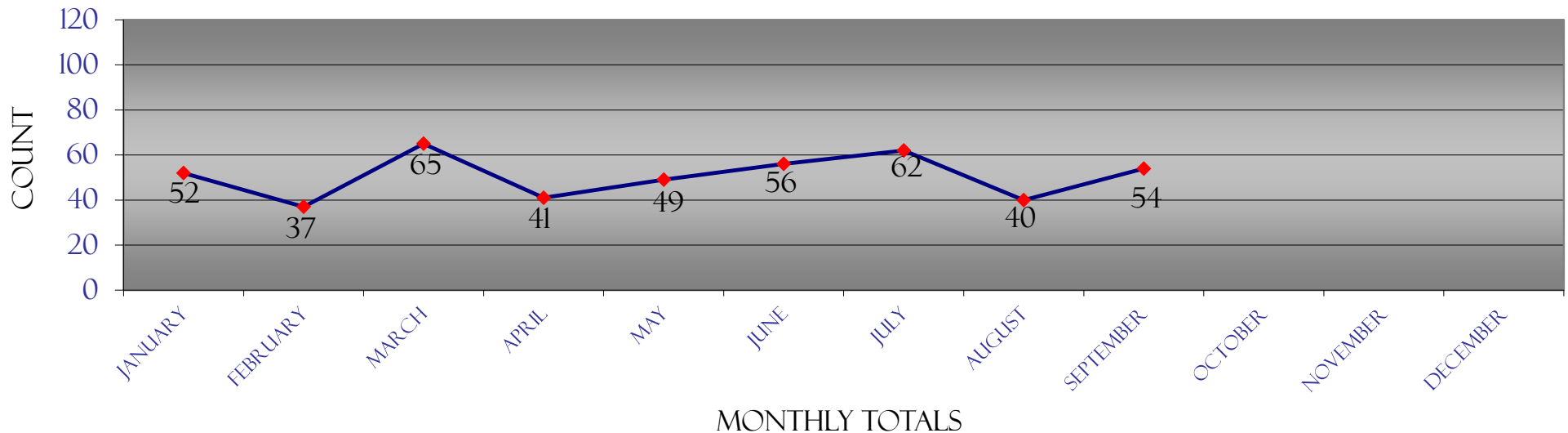
October  
2017

# COOLIDGE POLICE DEPARTMENT

## 2017 UNIFORM CRIME REPORT & TRAFFIC DATA

2017	January	February	March	April	May	June	July	August	September	October	November	December	Totals	Rate/1,000
<b>Homicide</b>	0	0	0	0	1	0	0	0	0				<b>1</b>	<b>0.08</b>
<b>Forcible Rape</b>	1	0	1	0	0	1	0	0	0				<b>3</b>	<b>0.24</b>
<b>Robbery</b>	0	0	1	0	0	1	0	2	2				<b>6</b>	<b>0.49</b>
<b>Agg. Assault</b>	4	2	2	1	4	0	3	1	2				<b>19</b>	<b>1.54</b>
<b>Violent Crime</b>	<b>5</b>	<b>2</b>	<b>4</b>	<b>1</b>	<b>5</b>	<b>2</b>	<b>3</b>	<b>3</b>	<b>4</b>				<b>29</b>	<b>2.36</b>
<b>Burglary</b>	10	6	16	4	3	8	12	4	6				<b>69</b>	<b>5.60</b>
<b>Theft</b>	35	26	39	32	39	43	46	32	41				<b>333</b>	<b>27.05</b>
<b>Motor Vehicle Theft</b>	2	3	5	4	2	3	1	1	3				<b>24</b>	<b>1.95</b>
<b>Arson</b>	0	0	1	0	0	0	0	0	0				<b>1</b>	<b>0.08</b>
<b>Property Crime</b>	<b>47</b>	<b>35</b>	<b>61</b>	<b>40</b>	<b>44</b>	<b>54</b>	<b>59</b>	<b>37</b>	<b>50</b>				<b>427</b>	<b>34.68</b>
<b>Total Part I Crime</b>	<b>52</b>	<b>37</b>	<b>65</b>	<b>41</b>	<b>49</b>	<b>56</b>	<b>62</b>	<b>40</b>	<b>54</b>				<b>456</b>	<b>37.04</b>
<b>Crime Rate Per 1,000</b>	<b>4.22</b>	<b>3.01</b>	<b>5.28</b>	<b>3.33</b>	<b>3.98</b>	<b>4.55</b>	<b>5.04</b>	<b>3.25</b>	<b>4.39</b>				<b>37.04</b>	
<b>Assault</b>	21	14	19	14	13	15	14	9	8				<b>127</b>	<b>10.32</b>
<b>Drug Offenses</b>	5	5	8	5	5	0	1	8	2				<b>39</b>	<b>3.17</b>
<b>Accidents w/injuries</b>	6	4	7	7	4	5	1	5	8				<b>47</b>	<b>3.82</b>
<b>Accidents w/o injuries</b>	15	13	19	14	12	10	11	11	9				<b>114</b>	<b>9.26</b>
<b>Fatal accidents</b>	1	0	0	0	0	0	0	0	0				<b>1</b>	<b>0.08</b>
<b>Traffic - Civil/Criminal</b>	152	107	130	135	147	99	179	65	83				<b>1,097</b>	<b>89.11</b>
<b>DUI arrests</b>	6	3	7	5	3	6	10	6	4				<b>50</b>	<b>4.06</b>

### 2017 UNIFORM CRIME REPORT



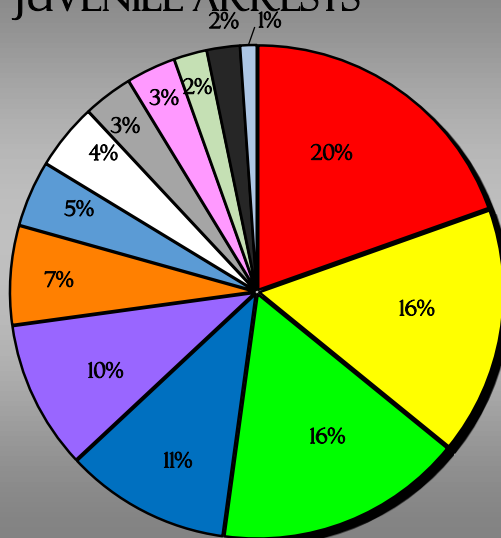
The eight crimes listed at the top of the report are Part I crimes reported for statistical purposes to the Department of Public Safety and the FBI.  
 The rate is calculated using population estimates of 12,311 provided by Office of Employment & Population Statistics, Arizona Department of Administration

# COOLIDGE POLICE DEPARTMENT

## 2017 JUVENILE ARRESTS REPORT

<b>Part I Crimes</b>	<b>January</b>	<b>February</b>	<b>March</b>	<b>April</b>	<b>May</b>	<b>June</b>	<b>July</b>	<b>August</b>	<b>September</b>	<b>October</b>	<b>November</b>	<b>December</b>	<b>Totals</b>
Homicide	0	0	0	0	0	0	0	0	0				0
Forcible Rape	0	0	0	0	0	0	0	0	0				0
Robbery	0	0	0	0	0	0	0	0	0				0
Agg. Assault	1	1	0	0	1	0	0	0	1				4
Burglary	0	0	0	0	0	0	8	0	1				9
Theft	1	0	0	0	0	0	1	1	3				6
Motor Vehicle Theft	0	2	0	0	1	0	0	0	0				3
Arson	0	0	3	0	0	0	0	0	0				3
<b>Totals</b>	<b>2</b>	<b>3</b>	<b>3</b>	<b>0</b>	<b>2</b>	<b>0</b>	<b>9</b>	<b>1</b>	<b>5</b>				<b>25</b>
<b>Part II Crimes</b>													
Other Assault	2	3	2	2	4	1	1	2	1				18
Weapons Offense	0	0	0	0	0	0	0	0	0				0
Vandalism	0	6	1	2	1	0	1	4	0				15
Disorderly Conduct	1	0	0	0	2	0	0	1	0				4
Sex Offenses (ex. Rape or Prost.)	0	0	0	0	0	0	0	0	0				0
Forgery/Counterfeiting	1	0	0	0	0	0	0	0	0				1
Drug Offenses	2	5	2	1	0	0	0	3	2				15
DUI arrests	0	0	0	0	0	0	0	0	0				0
Liquor Law Violations	0	0	0	0	2	0	0	0	0				2
Curfew and Loitering	0	0	0	0	0	1	0	0	1				2
Runaways	0	2	0	1	2	1	1	0	3				10

YTD 2017  
JUVENILE ARRESTS



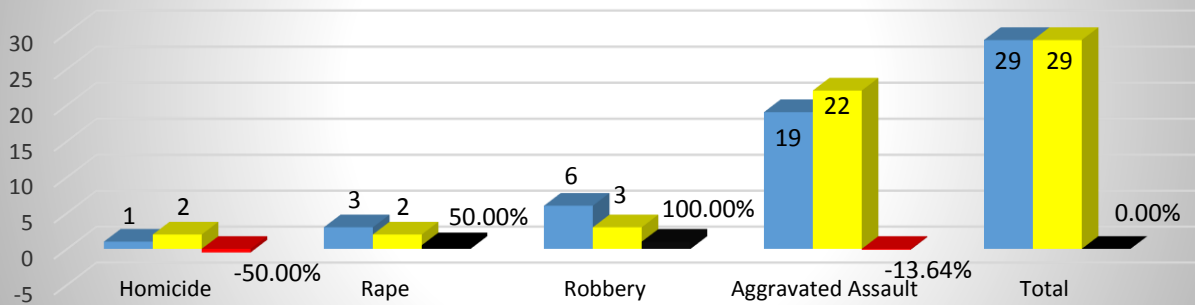
- OTHER ASSAULT
- VANDALISM
- DRUG OFFENSES
- RUNAWAYS
- BURGLARY
- THEFT
- DISORDERLY CONDUCT
- AGG. ASSAULT
- ARSON
- MOTOR VEHICLE THEFT
- LIQUOR LAW VIOLATIONS
- CURFEW AND LOITERING
- FORGERY/COUNTERFEITING

# COOLIDGE POLICE DEPARTMENT

## YEAR TO DATE CRIME COMPARISON

### SEPTEMBER 2017

#### Violent Crimes 2017 -2016 YTD Change

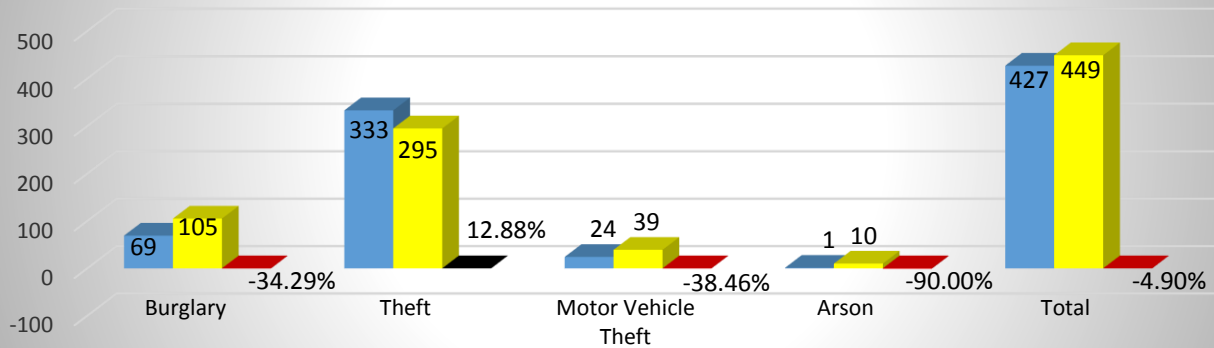


\*small numbers create large percentages

■ 2017 ■ 2016 ■ Change

n/c = not calculable

#### Property Crimes 2017-2016 YTD Change

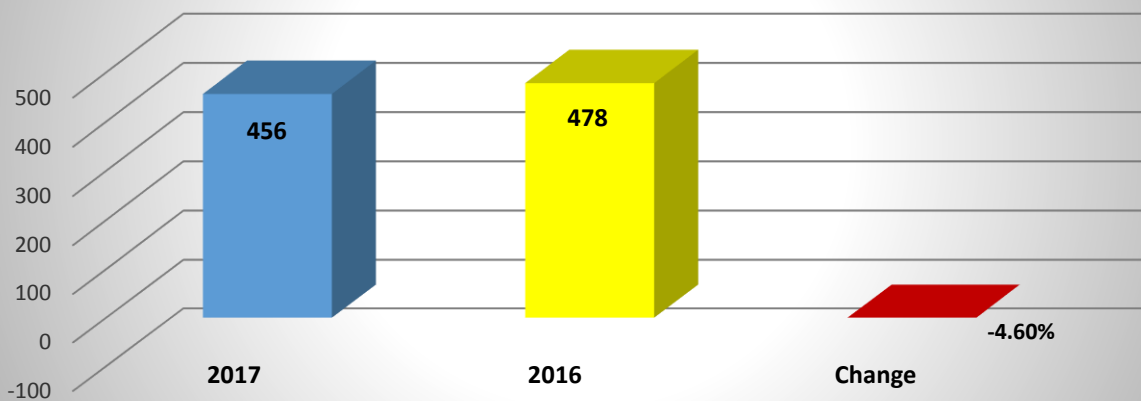


\*small numbers create large percentages

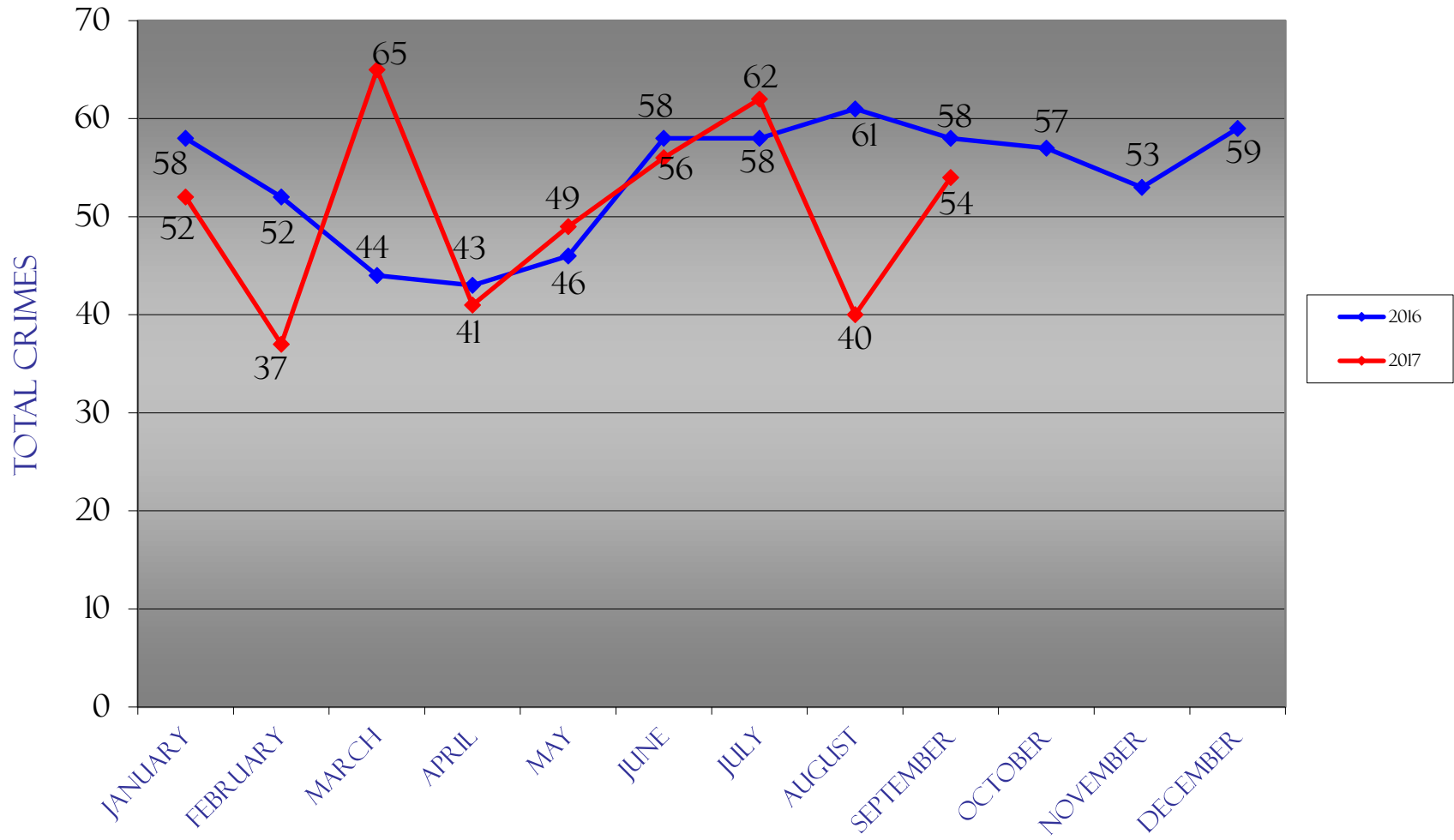
■ 2017 ■ 2016 ■ Change

n/c = not calculable

#### Total Crimes 2017-2016 YTD Change



# UCR CRIMES



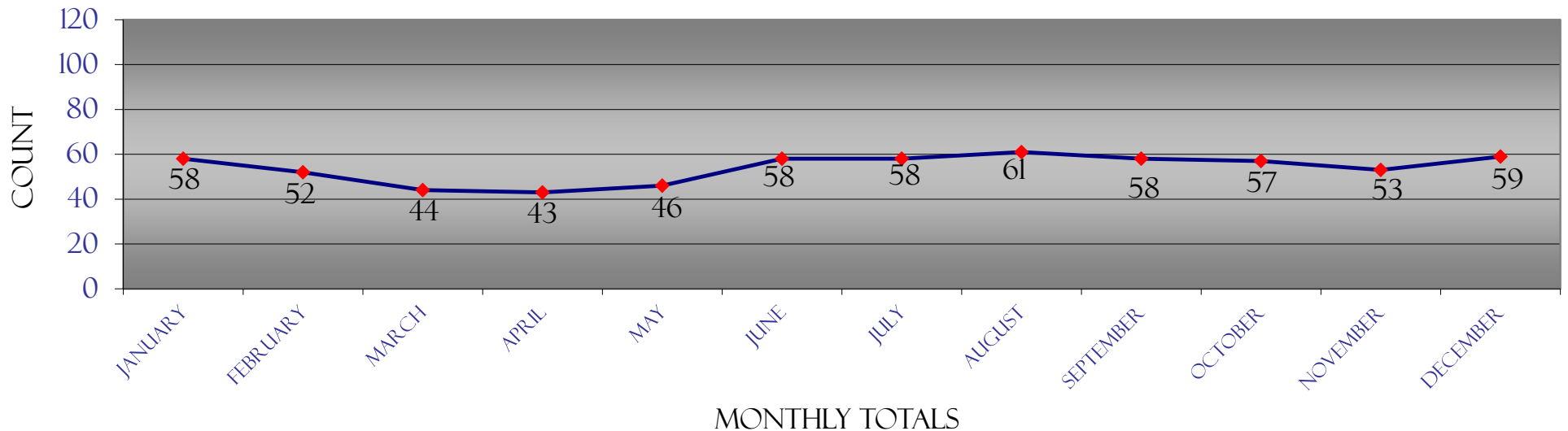
2016 COMPARED TO 2017

# COOLIDGE POLICE DEPARTMENT

## 2016 UNIFORM CRIME REPORT & TRAFFIC DATA

2016	January	February	March	April	May	June	July	August	September	October	November	December	Totals	Rate/1,000
<b>Homicide</b>	2	0	0	0	0	0	0	0	0	0	0	0	2	0.16
<b>Forcible Rape</b>	0	0	0	1	0	0	1	0	0	0	0	1	3	0.25
<b>Robbery</b>	0	0	1	0	1	0	0	1	0	2	1	2	8	0.66
<b>Agg. Assault</b>	1	4	1	3	2	2	2	2	5	1	2	1	26	2.13
<b>Violent Crime</b>	<b>3</b>	<b>4</b>	<b>2</b>	<b>4</b>	<b>3</b>	<b>2</b>	<b>3</b>	<b>3</b>	<b>5</b>	<b>3</b>	<b>3</b>	<b>4</b>	<b>39</b>	<b>3.20</b>
<b>Burglary</b>	13	14	9	8	10	10	13	18	10	14	12	14	145	11.90
<b>Theft</b>	41	29	31	24	27	38	35	31	39	38	35	37	405	33.23
<b>Motor Vehicle Theft</b>	1	4	1	7	4	5	6	7	4	2	3	4	48	3.94
<b>Arson</b>	0	1	1	0	2	3	1	2	0	0	0	0	10	0.82
<b>Property Crime</b>	<b>55</b>	<b>48</b>	<b>42</b>	<b>39</b>	<b>43</b>	<b>56</b>	<b>55</b>	<b>58</b>	<b>53</b>	<b>54</b>	<b>50</b>	<b>55</b>	<b>608</b>	<b>49.89</b>
<b>Total Part I Crime</b>	<b>58</b>	<b>52</b>	<b>44</b>	<b>43</b>	<b>46</b>	<b>58</b>	<b>58</b>	<b>61</b>	<b>58</b>	<b>57</b>	<b>53</b>	<b>59</b>	<b>647</b>	<b>53.09</b>
<b>Crime Rate Per 1,000</b>	<b>4.76</b>	<b>4.27</b>	<b>3.61</b>	<b>3.53</b>	<b>3.77</b>	<b>4.76</b>	<b>4.76</b>	<b>5.01</b>	<b>4.76</b>	<b>4.68</b>	<b>4.35</b>	<b>4.84</b>	<b>53.09</b>	
<b>Assault</b>	11	14	7	17	14	10	20	15	14	16	17	12	167	13.89
<b>Drug Offenses</b>	6	7	5	2	6	7	0	1	3	2	3	5	47	3.91
<b>Accidents w/injuries</b>	5	4	6	8	1	6	2	5	8	3	2	3	53	4.41
<b>Accidents w/o injuries</b>	9	16	13	19	14	7	17	18	15	18	14	15	175	14.55
<b>Fatal accidents</b>	0	0	1	2	0	0	1	0	0	0	0	0	4	0.33
<b>Traffic - Civil/Criminal</b>	102	145	112	121	136	146	120	88	111	70	72	88	1,311	109.00
<b>DUI arrests</b>	6	1	3	5	7	4	4	0	6	3	3	6	48	3.99

### 2016 UNIFORM CRIME REPORT



The eight crimes listed at the top of the report are Part I crimes reported for statistical purposes to the Department of Public Safety and the FBI.

The rate is calculated using population estimates of 12,187 provided by Office of Employment & Population Statistics, Arizona Department of Administration.

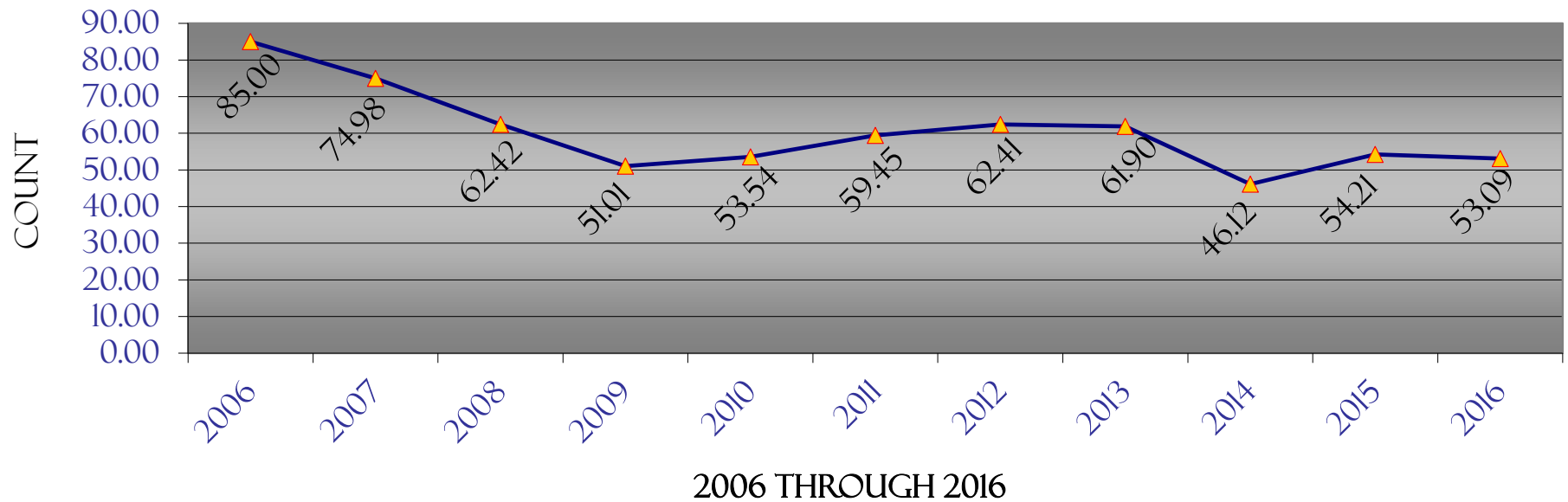
# COOLIDGE POLICE DEPARTMENT

## UNIFORM CRIME REPORT

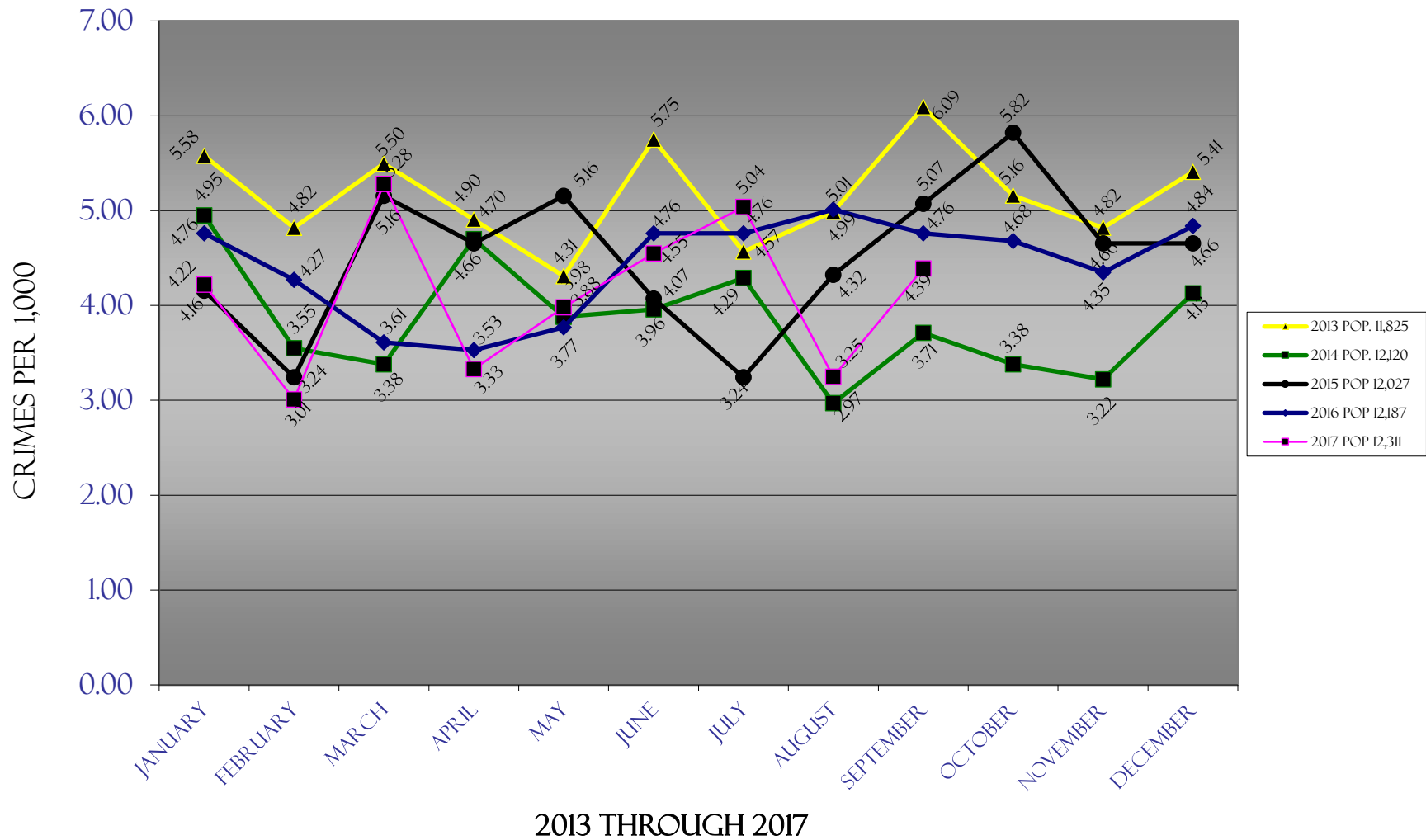
### HISTORICAL DATA

	January	February	March	April	May	June	July	August	September	October	November	December	Total	Rate/1,000
<b>2006</b>	76	63	92	78	70	79	52	85	76	56	71	86	884	85.00
<b>2007</b>	86	96	60	77	62	77	66	59	69	68	78	71	869	74.98
<b>2008</b>	79	42	43	54	47	44	48	84	86	94	58	78	757	62.42
<b>2009</b>	75	66	62	58	30	52	49	35	53	57	47	44	628	51.01
<b>2010</b>	48	45	49	36	35	44	56	64	60	66	65	83	651	53.54
<b>2011</b>	86	46	44	55	69	54	68	60	59	56	52	54	703	59.45
<b>2012</b>	41	37	59	61	117	70	78	51	59	42	64	59	738	62.41
<b>2013</b>	66	57	65	58	51	68	54	59	72	61	57	64	732	61.90
<b>2014</b>	60	43	41	57	47	48	52	36	45	41	39	50	559	46.12
<b>2015</b>	50	39	62	56	62	49	39	52	61	70	56	56	652	54.21
<b>2016</b>	58	52	44	43	46	58	58	61	58	57	53	59	647	53.09
<b>2017</b>	52	37	65	41	49	56	62	40	54				456	37.04
<b>% Change from last year</b>	<b>-10.34</b>	<b>-28.85</b>	<b>47.73</b>	<b>-4.65</b>	<b>6.52</b>	<b>-3.45</b>	<b>6.90</b>	<b>-34.43</b>	<b>-6.90</b>					

CRIMES PER 1,000 HISTORICALLY



### TO-DATE CRIME RATE COMPARISON



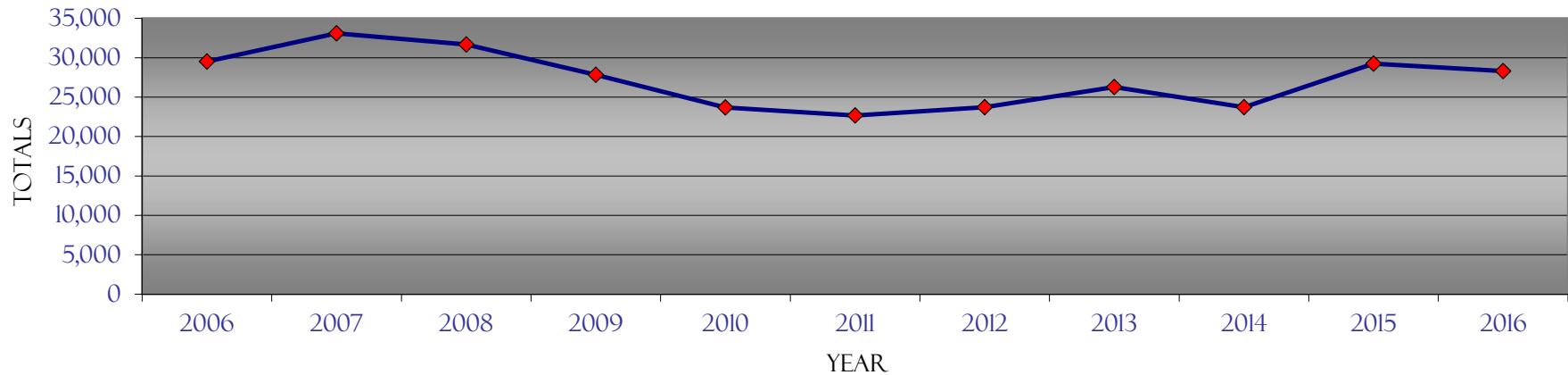


# COOLIDGE POLICE DEPARTMENT

## CALLS FOR SERVICE HISTORICAL DATA

<i>CFs</i>	<i>Jan</i>	<i>Feb</i>	<i>Mar</i>	<i>Apr</i>	<i>May</i>	<i>Jun</i>	<i>Jul</i>	<i>Aug</i>	<i>Sep</i>	<i>Oct</i>	<i>Nov</i>	<i>Dec</i>	<i>Totals</i>
<b>2006</b>	2,044	2,245	2,414	2,373	2,484	2,249	2,604	2,839	2,695	2,710	2,276	2,591	29,524
<b>2007</b>	2,945	2,795	2,788	2,620	2,630	2,874	2,648	2,928	2,751	2,946	2,550	2,621	33,096
<b>2008</b>	2,762	2,728	2,776	2,941	3,213	2,373	2,551	2,663	2,624	2,442	2,333	2,264	31,670
<b>2009</b>	2,460	2,043	2,460	2,352	2,242	2,112	2,600	2,441	2,214	2,499	2,099	2,324	27,846
<b>2010</b>	2,203	1,765	2,087	2,055	1,919	1,948	2,045	1,993	2,025	1,988	1,764	1,897	23,689
<b>2011</b>	1,992	1,888	1,819	1,957	2,104	1,750	1,929	1,930	1,869	1,828	1,816	1,787	22,669
<b>2012</b>	1,715	1,781	2,097	1,929	2,233	1,978	1,943	2,041	2,102	1,897	1,925	2,087	23,728
<b>2013</b>	1,968	1,726	2,169	2,109	2,264	1,936	2,241	2,676	2,413	2,423	2,115	2,255	26,295
<b>2014</b>	2,011	1,816	2,122	2,074	2,184	1,788	1,905	1,868	2,032	2,033	1,821	2,068	23,722
<b>2015</b>	2,115	2,399	2,584	2,501	2,586	2,276	2,373	2,592	2,664	2,437	2,321	2,391	29,239
<b>2016</b>	2,351	2,271	2,509	2,489	2,503	2,294	2,373	2,380	2,265	2,338	2,268	2,264	28,305
<b>2017</b>	2,319	1,986	2,307	2,174	2,283	1,960	2,299	2,117	1,992				19,437
<b>% Change from last year</b>	<b>-1.36</b>	<b>-12.55</b>	<b>-8.05</b>	<b>-12.66</b>	<b>-8.79</b>	<b>-14.56</b>	<b>-3.12</b>	<b>-11.05</b>	<b>-12.05</b>				

CALLS FOR SERVICE TOTALS BY YEAR



# CITATIONS HISTORICAL DATA

	<b>Criminal Traffic</b>	<b>Civil Traffic</b>	<b>Criminal</b>	<b>Warning</b>	<b>Totals</b>
October-16	12	59	44	24	139
November-16	17	55	23	41	136
December-16	32	56	34	33	155
January-17	48	104	33	68	253
February-17	39	68	25	38	170
March-17	33	97	31	38	199
April-17	53	82	24	87	246
May-17	32	115	56	87	290
June-17	21	78	62	42	203
July-17	40	139	60	47	286
August-17	15	50	59	29	153
September-17	18	65	31	52	166
% Change from last month	20.00	30.00	-47.46	79.31	8.50
<b>Total</b>	<b>360</b>	<b>968</b>	<b>482</b>	<b>586</b>	<b>2396</b>

\*note: small numbers create large percentages

n/c = not calculable

# ARRESTS HISTORICAL DATA

	<b>Felony</b>		<b>Misdemeanor</b>		<b>Warrant</b>		<b>Status Offense</b>		<b>Totals</b>	
	<b>Juv .</b>	<b>Adult</b>	<b>Juv.</b>	<b>Adult</b>	<b>Juv.</b>	<b>Adult</b>	<b>Juv.</b>	<b>Adult</b>	<b>Juv.</b>	<b>Adult</b>
October-16	2	7	8	45	0	23	2	0	12	75
November-16	2	10	7	35	0	27	0	1	9	73
December-16	5	7	20	35	0	20	2	1	27	63
January-17	2	7	12	45	0	23	2	0	16	75
February-17	7	9	11	38	0	15	1	0	19	62
March-17	1	11	12	45	0	49	0	0	13	105
April-17	0	9	6	37	0	31	1	0	7	77
May-17	2	17	13	41	0	36	2	0	17	94
June-17	0	9	2	46	0	22	1	0	3	77
July-17	8	9	4	59	0	43	1	0	13	111
August-17	0	8	13	45	0	34	0	0	13	87
September-17	1	8	15	37	1	30	2	0	19	75
% Change from last month	n/c	0.00	15.38	-17.78	n/c	-11.76	n/c	n/c	46.15	-13.79
<b>Total</b>	<b>30</b>	<b>111</b>	<b>123</b>	<b>508</b>	<b>1</b>	<b>353</b>	<b>14</b>	<b>2</b>	<b>168</b>	<b>974</b>

\*note: small numbers create large percentages

n/c = not calculable