

COOLIDGE POLICE DEPARTMENT



Monthly Activity Report

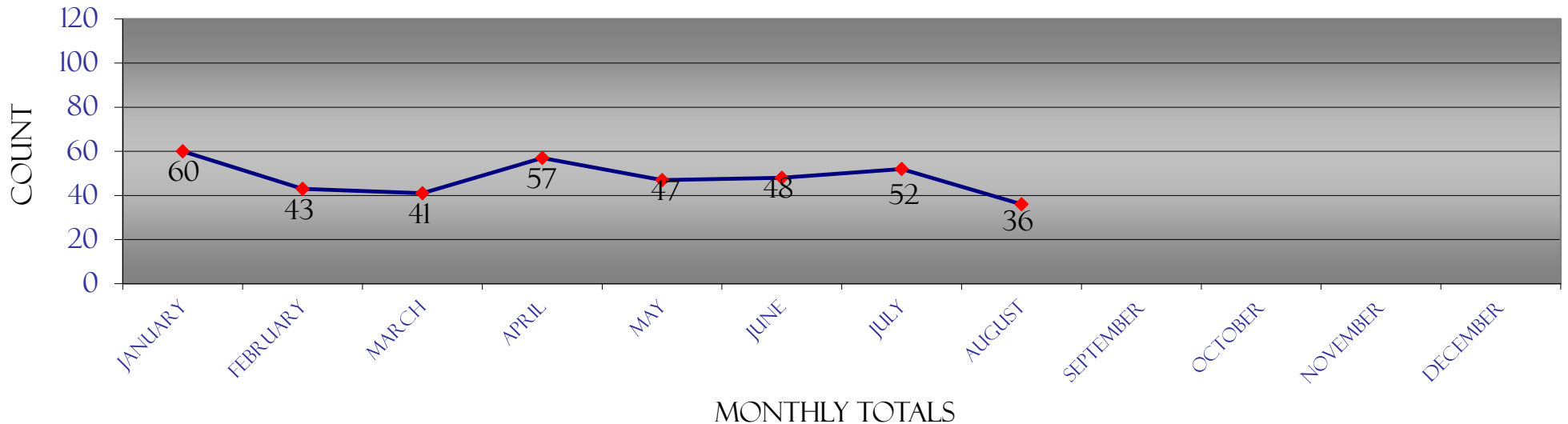
September
2014

COOLIDGE POLICE DEPARTMENT

2014 UNIFORM CRIME REPORT & TRAFFIC DATA

2013	January	February	March	April	May	June	July	August	September	October	November	December	Totals	Rate/1,000
Homicide	0	0	0	0	0	0	0	0					0	0.00
Forcible Rape	0	0	0	1	0	1	0	0					2	0.17
Robbery	0	0	1	2	3	2	1	1					10	0.83
Agg. Assault	3	3	2	3	4	1	0	1					17	1.40
Violent Crime	3	3	3	6	7	4	1	2					29	2
Burglary	14	8	7	10	3	6	5	4					57	4.70
Theft	43	32	29	39	33	37	42	24					279	23.02
Motor Vehicle Theft	0	0	2	1	4	1	4	1					13	1.07
Arson	0	0	0	1	0	0	0	5					6	0.50
Property Crime	57	40	38	51	40	44	51	34					355	29.29
Total Part I Crime	60	43	41	57	47	48	52	36					384	31.68
Crime Rate Per 1,000	4.95	3.55	3.38	4.70	3.88	3.96	4.29	2.97					32.47	
Assault	15	9	17	17	14	9	19	19					119	9.82
Drug Offenses	10	4	4	2	2	1	6	3					32	2.64
Accidents w/injuries	3	6	3	3	3	4	1	3					26	2.15
Accidents w/o injuries	9	14	12	11	9	10	10	10					85	7.01
Fatal accidents	0	0	0	0	0	0	0	0					0	0.00
Traffic - Civil/Criminal	33	90	92	96	224	66	88	73					762	62.87
DUI arrests	3	2	10	7	4	2	2	3					33	2.72

2014 UNIFORM CRIME REPORT



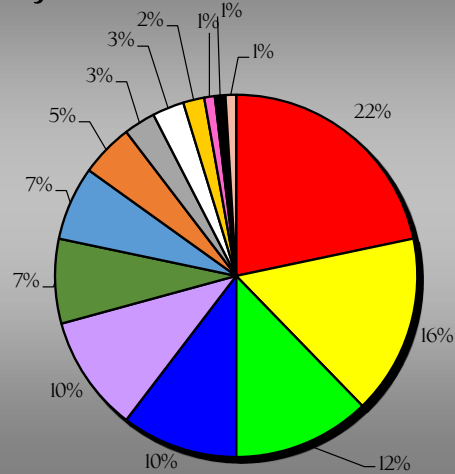
The eight crimes listed at the top of the report are Part I crimes reported for statistical purposes to the Department of Public Safety and the FBI.
 The rate is calculated using population estimates of 12,120 provided by Office of Employment & Population Statistics, Arizona Department of Administration

COOLIDGE POLICE DEPARTMENT

2014 JUVENILE ACTIVITY & ARRESTS REPORT

Part I Crimes	January	February	March	April	May	June	July	August	September	October	November	December	Totals
Homicide	0	0	0	0	0	0	0	0					0
Forcible Rape	0	0	0	0	0	0	0	0					0
Robbery	0	0	0	1	0	0	0	0					1
Agg. Assault	1	0	0	0	0	0	0	2					3
Burglary	0	0	0	0	0	0	5	0					5
Theft	5	0	4	1	1	0	0	0					11
Motor Vehicle Theft	0	0	0	1	0	0	0	0					1
Arson	0	0	0	0	0	0	0	0					0
Totals	6	0	4	3	1	0	5	2					21
Part II Crimes													
Other Assault	2	3	5	3	6	2	2	0					23
Weapons Offense	0	0	1	1	0	0	0	0					2
Vandalism	4	1	3	1	2	1	0	1					13
Disorderly Conduct	0	0	1	0	0	0	1	1					3
Sex Offenses (ex. Rape or Prost.)	0	0	1	0	0	0	0	0					1
Drug Offenses	6	2	1	0	1	0	0	1					11
DUI arrests	0	0	0	0	0	0	0	0					0
Liquor Law Violations	0	1	0	0	6	0	0	0					7
Curfew and Loitering	0	2	0	0	0	4	0	2					8
Runaways	0	3	2	2	2	2	2	4					17

YTD 2014
JUVENILE ACTIVITY



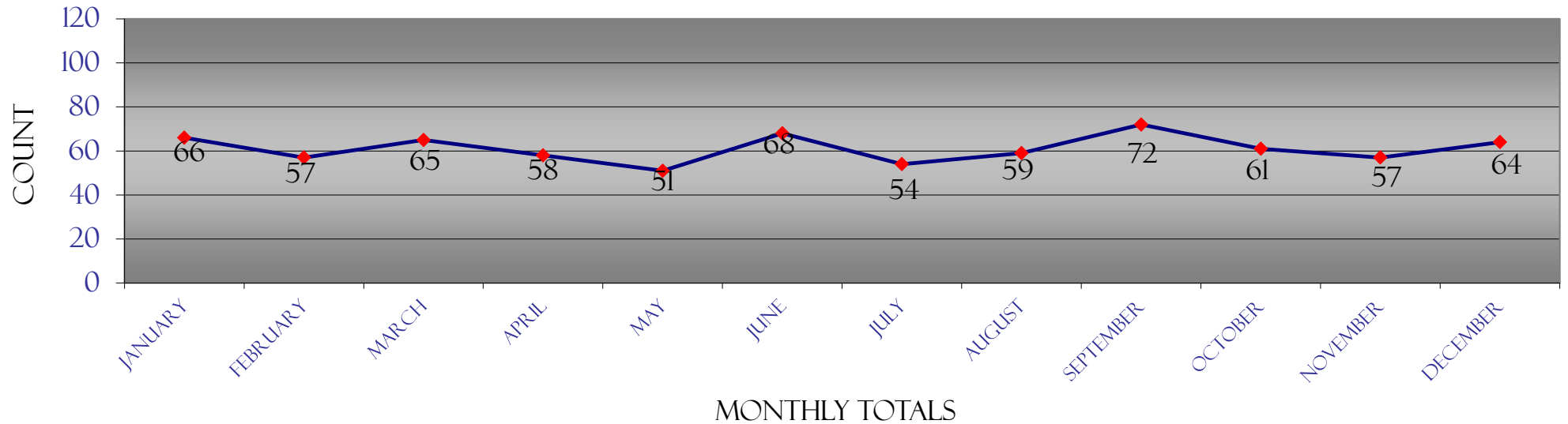
- OTHER ASSAULT
- RUNAWAYS
- VANDALISM
- THEFT
- DRUG OFFENSES
- CURFEW AND LOITERING
- LIQUOR LAW VIOLATIONS
- BURGLARY
- AGG. ASSAULT
- DISORDERLY CONDUCT
- WEAPONS OFFENSE
- SEX OFFENSES (EX. RAPE OR PROST.)
- ROBBERY
- MOTOR VEHICLE THEFT

COOLIDGE POLICE DEPARTMENT

2013 UNIFORM CRIME REPORT & TRAFFIC DATA

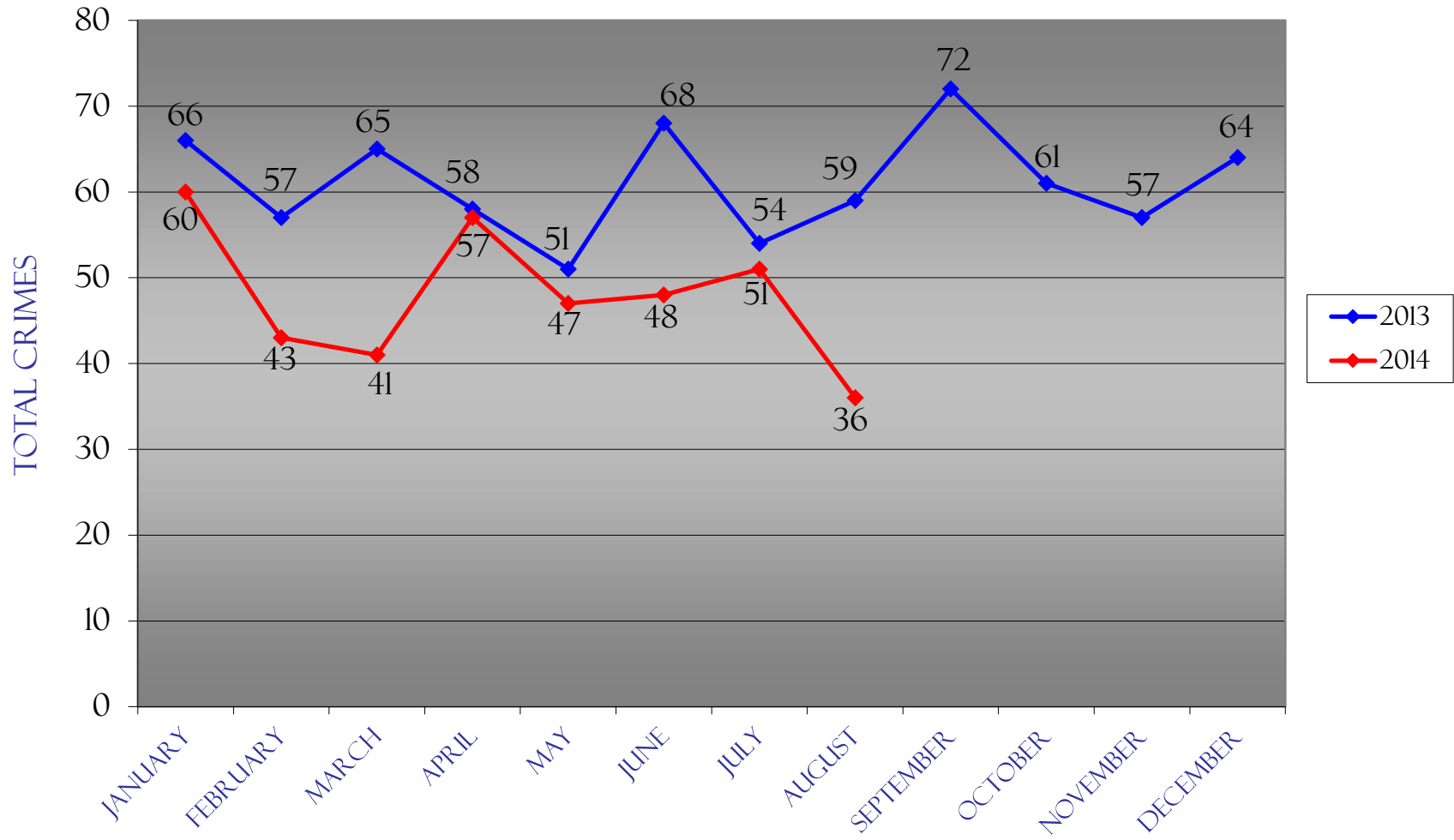
2013	January	February	March	April	May	June	July	August	September	October	November	December	Totals	Rate/1,000
Homicide	0	0	0	0	0	0	0	0	0	0	0	0	0	0.00
Forcible Rape	1	0	1	0	0	0	0	0	1	0	2	0	5	0.42
Robbery	1	1	0	0	1	1	2	0	1	5	1	0	13	1.10
Agg. Assault	4	4	1	3	4	5	5	4	6	2	4	6	48	4.06
Violent Crime	6	5	2	3	5	6	7	4	8	7	7	6	66	5.58
Burglary	20	11	10	7	9	14	17	13	15	8	11	8	143	12.09
Theft	38	38	50	43	36	44	28	38	46	45	36	48	490	41.44
Motor Vehicle Theft	1	2	3	4	1	4	2	4	3	1	2	2	29	2.45
Arson	1	1	0	1	0	0	0	0	0	0	1	0	4	0.34
Property Crime	60	52	63	55	46	62	47	55	64	54	50	58	666	56.32
Total Part I Crime	66	57	65	58	51	68	54	59	72	61	57	64	732	61.90
Crime Rate Per 1,000	5.58	4.82	5.50	4.90	4.31	5.75	4.57	4.99	6.09	5.16	4.82	5.41	61.90	
Assault	17	9	8	20	24	24	22	25	16	11	19	20	215	18.18
Drug Offenses	1	3	4	4	3	5	5	5	7	4	5	17	63	5.33
Accidents w/injuries	3	3	1	2	1	5	4	3	6	7	1	2	38	3.21
Accidents w/o injuries	10	5	19	7	10	7	8	9	18	18	15	17	143	12.09
Fatal accidents	0	0	0	0	0	0	0	0	0	0	0	0	0	0.00
Traffic - Civil/Criminal	33	48	77	94	161	90	112	110	84	113	95	98	1,115	94.29
DUI arrests	0	5	5	7	4	1	4	3	7	5	6	2	49	4.14

2013 UNIFORM CRIME REPORT



The eight crimes listed at the top of the report are Part I crimes reported for statistical purposes to the Department of Public Safety and the FBI.
 The rate is calculated using the 2010 Census population of 11,825

UCR CRIMES



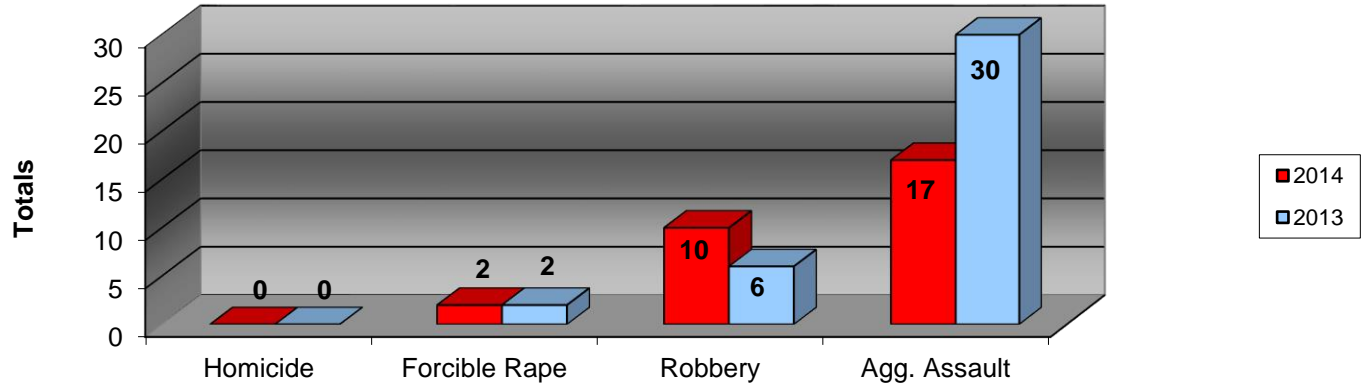
2013 COMPARED TO 2014

COOLIDGE POLICE DEPARTMENT

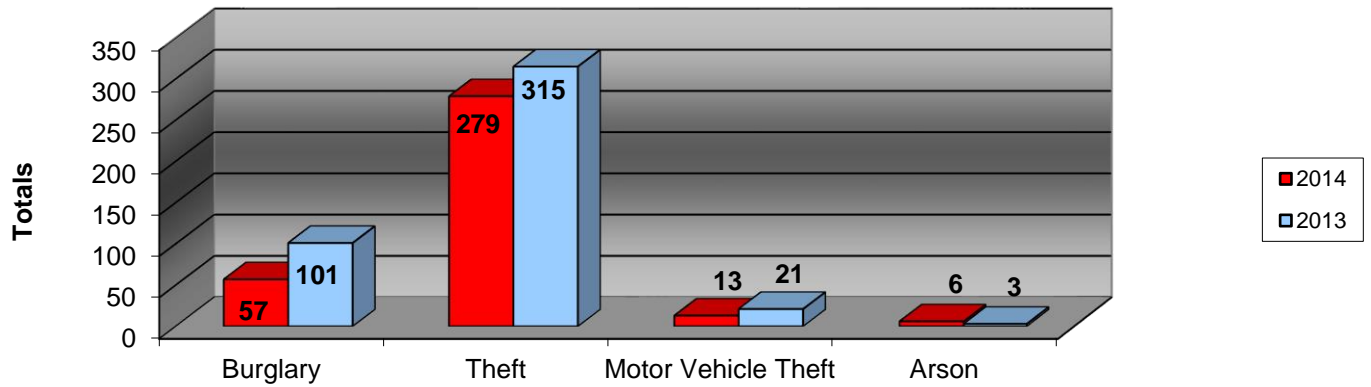
YEAR TO DATE CRIME COMPARISON

AUGUST 2014

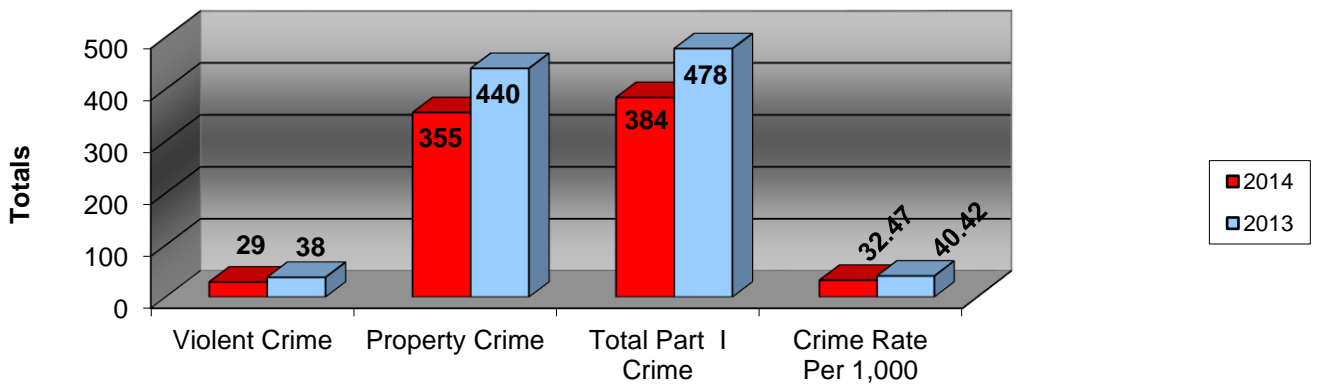
Violent Crimes



Property Crimes



Total Crimes & Rate

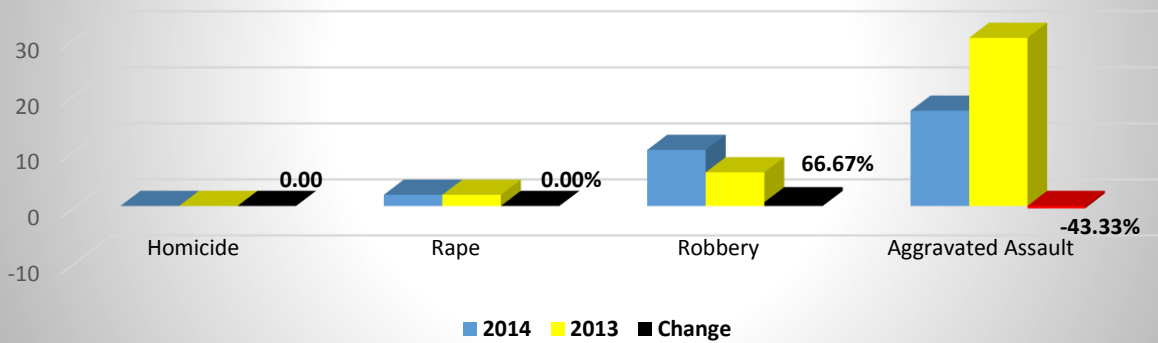


COOLIDGE POLICE DEPARTMENT

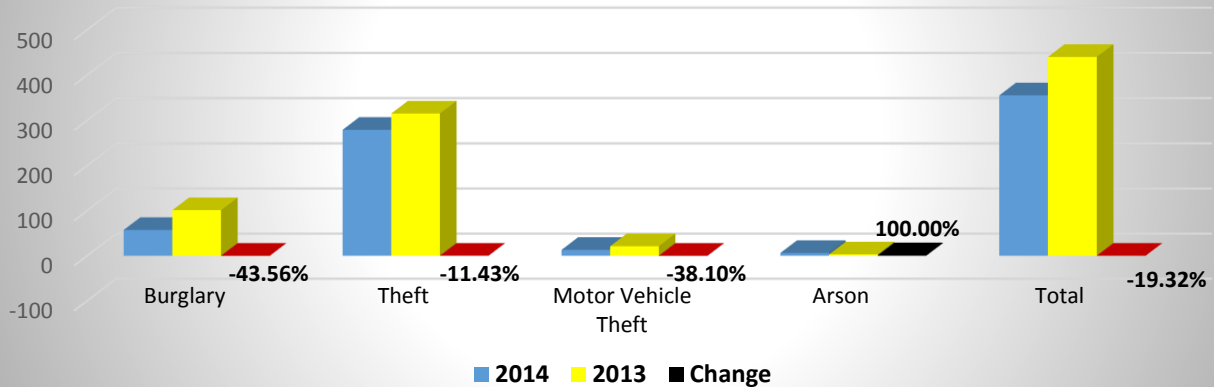
YEAR TO DATE CRIME COMPARISON

AUGUST 2014

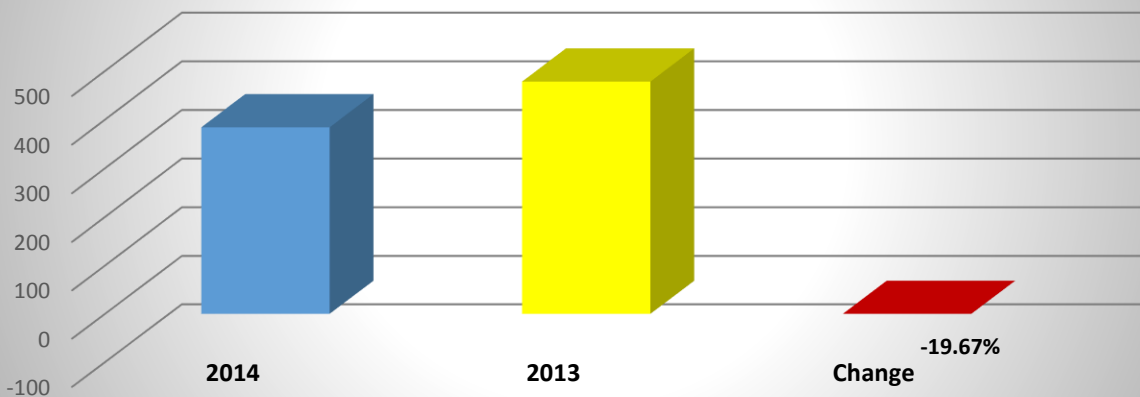
Violent Crimes 2014 -2013 YTD Change



Property Crimes 2014-2013 YTD Change



Total Crimes 2014-2013 YTD Change



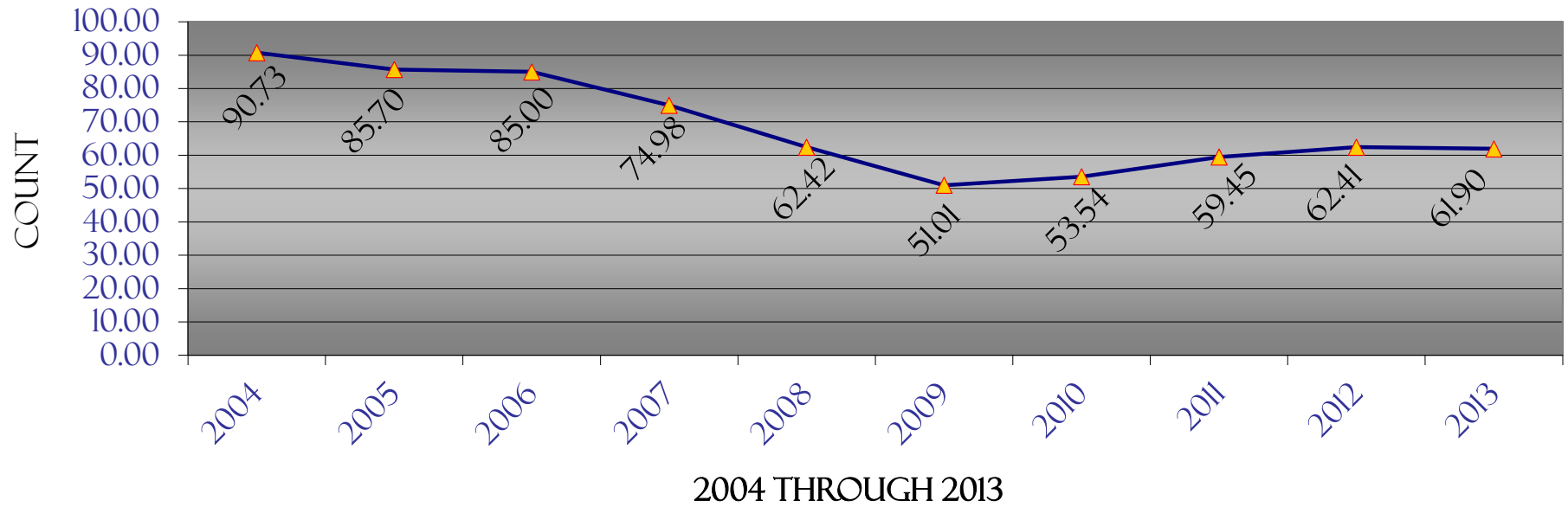
COOLIDGE POLICE DEPARTMENT

UNIFORM CRIME REPORT

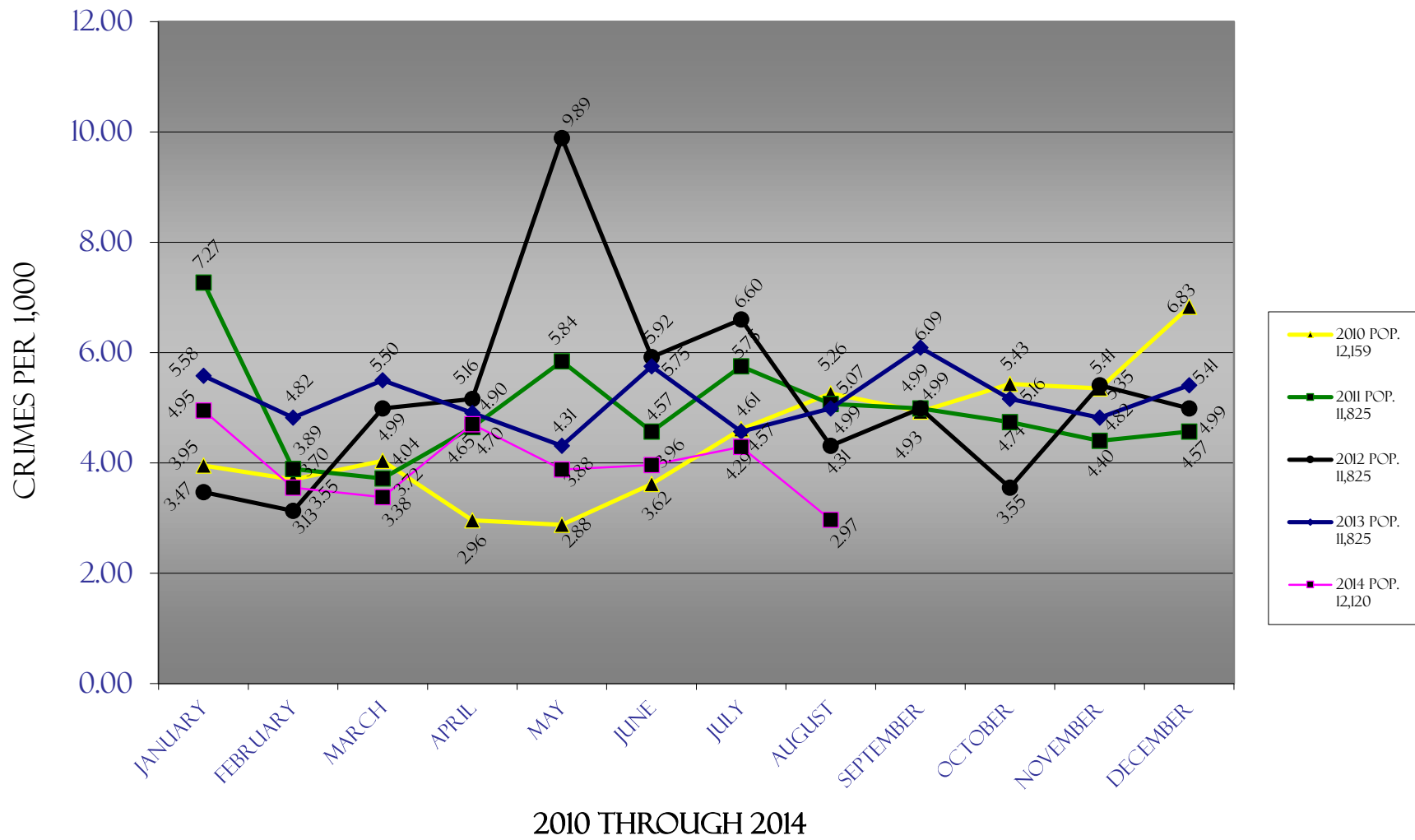
HISTORICAL DATA

	January	February	March	April	May	June	July	August	September	October	November	December	Total	Rate/1,000
2004	68	47	73	47	59	69	62	77	62	54	55	66	739	90.73
2005	47	56	81	65	52	36	71	56	57	61	48	68	698	85.70
2006	76	63	92	78	70	79	52	85	76	56	71	86	884	85.00
2007	86	96	60	77	62	77	66	59	69	68	78	71	869	74.98
2008	79	42	43	54	47	44	48	84	86	94	58	78	757	62.42
2009	75	66	62	58	30	52	49	35	53	57	47	44	628	51.01
2010	48	45	49	36	35	44	56	64	60	66	65	83	651	53.54
2011	86	46	44	55	69	54	68	60	59	56	52	54	703	59.45
2012	41	37	59	61	117	70	78	51	59	42	64	59	738	62.41
2013	66	57	65	58	51	68	54	59	72	61	57	64	732	61.90
2014	60	43	41	57	47	48	51	36					383	31.60
% Change from last year	-9.09	-24.56	-36.92	-1.72	-7.84	-29.41	-5.56	-38.98						

CRIMES PER 1,000 HISTORICALLY

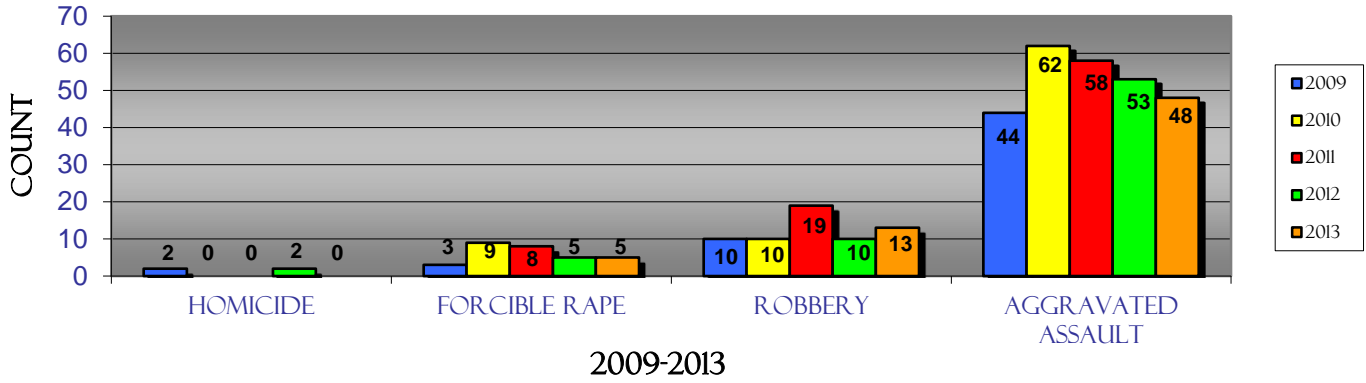


TO-DATE CRIME RATE COMPARISON

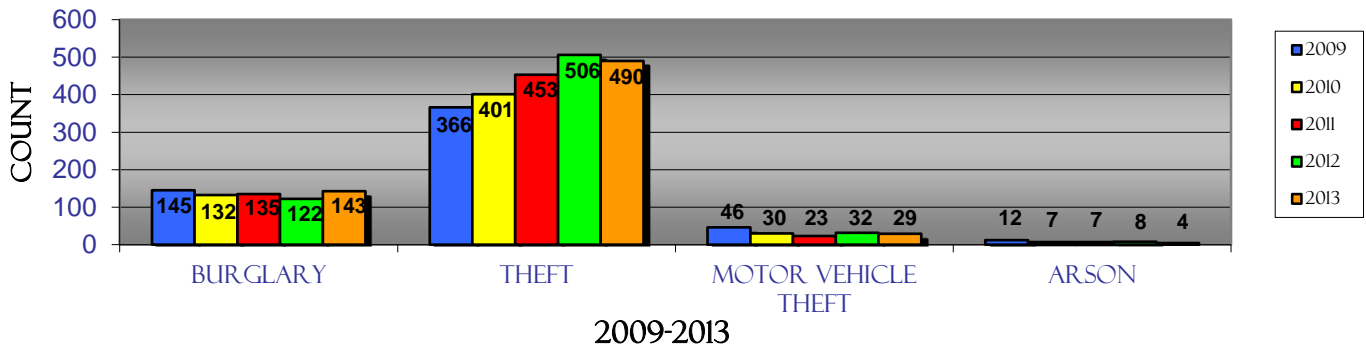


PART I CRIMES FIVE-YEAR COMPARISON

CITY OF COOLIDGE VIOLENT CRIMES



CITY OF COOLIDGE PROPERTY CRIMES

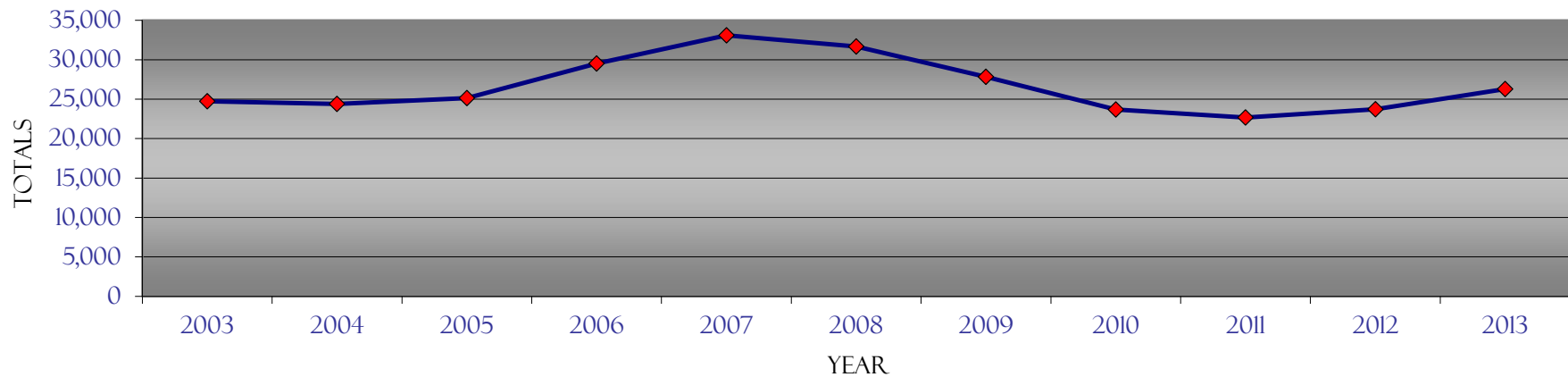


COOLIDGE POLICE DEPARTMENT

CALLS FOR SERVICE HISTORICAL DATA

<i>CFs</i>	<i>Jan</i>	<i>Feb</i>	<i>Mar</i>	<i>Apr</i>	<i>May</i>	<i>Jun</i>	<i>Jul</i>	<i>Aug</i>	<i>Sep</i>	<i>Oct</i>	<i>Nov</i>	<i>Dec</i>	<i>Totals</i>
2003	2,268	1,989	2,181	2,131	2,296	2,140	2,004	1,957	1,963	1,977	1,872	1,947	24,725
2004	2,172	1,911	2,056	2,132	2,011	1,930	2,029	2,129	1,967	2,193	1,876	1,994	24,400
2005	2,146	2,047	2,348	1,991	2,198	2,071	2,105	1,986	2,154	2,091	1,982	2,033	25,152
2006	2,044	2,245	2,414	2,373	2,484	2,249	2,604	2,839	2,695	2,710	2,276	2,591	29,524
2007	2,945	2,795	2,788	2,620	2,630	2,874	2,648	2,928	2,751	2,946	2,550	2,621	33,096
2008	2,762	2,728	2,776	2,941	3,213	2,373	2,551	2,663	2,624	2,442	2,333	2,264	31,670
2009	2,460	2,043	2,460	2,352	2,242	2,112	2,600	2,441	2,214	2,499	2,099	2,324	27,846
2010	2,203	1,765	2,087	2,055	1,919	1,948	2,045	1,993	2,025	1,988	1,764	1,897	23,689
2011	1,992	1,888	1,819	1,957	2,104	1,750	1,929	1,930	1,869	1,828	1,816	1,787	22,669
2012	1,715	1,781	2,097	1,929	2,233	1,978	1,943	2,041	2,102	1,897	1,925	2,087	23,728
2013	1,968	1,726	2,169	2,109	2,264	1,936	2,241	2,676	2,413	2,423	2,115	2,255	26,295
2014	2,011	1,816	2,122	2,074	2,184	1,788	1,905	1,868					15,768
% Change from last year	2.18	5.21	-2.17	-1.66	-3.53	-7.64	-14.99	-30.19					

CALLS FOR SERVICE TOTALS BY YEAR



CITATIONS HISTORICAL DATA

	Criminal Traffic	Civil Traffic	Criminal	Warning	Totals
September-13	23	61	40	38	162
October-13	26	93	31	58	208
November-13	32	63	30	32	157
December-13	27	71	32	31	161
January-14	16	58	22	36	132
February-14	16	74	34	39	163
March-14	28	64	26	71	189
April-14	23	73	36	28	160
May-14	34	190	37	89	350
June-14	17	49	29	48	143
July-14	14	74	31	43	162
August-14	13	60	40	30	143
% Change from last month	-7.14	-18.92	29.03	-30.23	-11.73
Total	269	930	388	543	2130

*note: small numbers create large percentages

n/c = not calculable

ARRESTS HISTORICAL DATA

	Felony		Misdemeanor		Warrant		Status Offense		Totals	
	Juv .	Adult	Juv.	Adult	Juv.	Adult	Juv.	Adult	Juv.	Adult
September-13	1	20	19	53	1	49	4	1	25	123
October-13	3	21	12	45	1	51	2	1	18	118
November-13	1	17	10	42	0	46	0	0	11	105
December-13	3	18	9	51	0	43	0	0	12	112
January-14	3	8	14	21	1	28	0	0	18	57
February-14	3	11	7	38	0	28	5	1	15	78
March-14	4	9	15	22	0	43	2	0	21	74
April-14	3	10	13	49	1	33	0	0	17	92
May-14	1	11	18	45	0	47	0	0	19	103
June-14	1	2	5	32	0	36	4	2	10	72
July-14	5	13	3	40	0	34	1	0	9	87
August-14	1	9	8	44	3	21	1	0	13	74
% Change from last month	-80.00	-30.77	166.67	10.00	n/c	-38.24	0.00	n/c	44.44	-14.94
Total	29	149	133	482	7	459	19	5	188	1095

*note: small numbers create large percentages

n/c = not calculable